

# CRYSTAL CITY INSIDER

The monthly newsletter of the Crystal City Civic Association



## A MESSAGE FROM THE PRESIDENT

February 2020

This is a friendly reminder – **if you haven't paid your \$10 Annual Dues for 2020, this is the last Newsletter you will receive.** [Please renew on our website](#) by PayPal or send a check to our Treasurer. We don't want to lose you!

~ Carol Fuller, CCCA President

## CIVIC ASSOCIATION ISSUES

### A Successful Joint Civic Associations Meeting January 14

What a great meeting we had. About 220 people turned out January 14 to learn about the Livability Framework created by our three civic associations in 22202 and how we can implement it with developers, businesses like Amazon, and the County. The program included:

1. Matt Mattauszek on "Beyond Amazon" with a PowerPoint on all the development areas in 22202.
2. Presentation of the Livability Framework and the Action Plan.
3. Panel on Open Space as an example of how we can implement the LF Action Plan
4. JBG Smith VP for Development Andy VanHorn on the Crystal City parks
5. Amazon's Community Affairs representative Brooke Oberwetter on community benefits in redesigning the Metropolitan Park, and
6. Tracy Gabriel of the Crystal City BID on how the Livability Framework fits with the BID's Strategic Plan and what the BID's role is with implementing the LF for Open Space.

See the presentations on the website under [Past Meetings](#), now featured in the "[Resources](#)" tab.

### Livability Framework Workshops

We will now be conducting a series of charette workshops groups of about 40 to develop a community vision on key elements in the Action Plan. The January 14th 3-CA meeting was the "launch" of this process. We will be discussing

specific policies we might bring to the County Board and other entities and provide input to the County's budget process (the CIP).

**January 25: Housing Affordability #1:** We had a very successful first housing workshop. We are working with our neighboring civic groups to develop community-led solutions for housing affordability as #AmazonHQ2 arrives.

Our hope is to unite renters and owners, single-family and multi-family, and neighbors of all walks of life with a shared understanding and vision on this important issue that is key to the future of our community and broader economy. Thanks to attendees, co-organizers, and partner/presenter Michelle Winters for being with us.

Get engaged. Don't leave decisions to others. **Here are the dates for the remainder of the Housing Workshops:**

**February 22:** Open Space (in planning stages)

**March 7:** Housing Affordability workshop #2

**March 28:** Future of the Underground/Community Facilities

**April 18:** Route 1/East-West Connectivity

### Meetings with County Staff and Manager

On January 17, the 3 CA presidents and a core group of those involved in the LAP development met with a broad group of County staff and then with the County Manager to present the LAP. The great turnout at the January 14 Livability Meeting, which was noted by both Bob Duffy and Mark Schwartz, certainly contributed to the positive

discussion. Overall, the meeting tone was positive, especially regarding county support for workshops, although we did not get specifics on any issue. But the County is clearly responding to what is a unique effort on the part of the 3 CAs.

### Crystal City Renters Happy Hour Meetup

Co-hosted by the Crystal City Civic Association and Crystal City Business Improvement District, this happy hour is your opportunity to get engaged, get involved, and get a little refreshment in the process. Featuring special remarks from Katie Cristol, Arlington County Board member and former Crystal City resident. Free drinks and light refreshments will be served.

**Thursday, February 6th**

**5:30pm to 7:30pm**

JBG National Landing Marketing Center (241 18th St S, Arlington, VA)

[RSVP: Sign up here \(and find our Facebook event\)](#)

This event is targeted at renters in our area to promote how to get involved in civic engagement and advocacy, with the rapid changes in the neighborhood.

## AMAZON IN CRYSTAL CITY

### New Amazon-Arlington solar farm to fulfill most of county's renewable pledges

Amazon and Arlington County have agreed to buy all the electricity generated from a new Dominion Energy solar power farm, a major step toward fulfilling their promises to rely fully on renewable energy in the coming decade.

The agreement, which Amazon has signed and the Arlington County Board approved by a

5-to-0 vote Tuesday night, would name a 1,500-acre site near the North Carolina border the "Amazon Arlington Solar Farm Virginia." Beginning in 2022, the farm will be capable of generating about 250 million kilowatt-hours per year, according to Dominion officials. Amazon will buy about 68 percent of the energy, and Arlington will buy about 32 percent, which equals 83 percent of the electricity used by the county government for its buildings, streetlights, traffic signals, water pumping stations and waste-water treatment. [Read the County release here.](#) [Read more here.](#)

### Demolition begins on Amazon HQ2 site

Just a month after developers got the go-ahead from Arlington County, machines on January 22 began picking apart the Metropolitan Park warehouse where Amazon plans to erect its first two towers for its second headquarters. Clark Construction Group is the lead contractor on Metropolitan Park.

Demolition of this building will be pretty quick, an executive with JBG Smith Properties, Amazon's development partner for its headquarters, has said. After that, crews could spend as long as a year digging for the buildings' 1,933-space underground parking garage. The towers are expected to reach their 22-story height by the end of 2022. Amazon employees will start their first day inside sometime in early 2023. [Read more here.](#)

### Amazon wants to protect HQ2. It may use the adjacent public park to do it.

Amazon is weighing methods for securing its second headquarters and appears to be looking across the pond for ideas. The U.S. embassy in London, described by its architect as among the safest buildings in Britain, avoids fences in favor of a number of "defense strategies" disguised as a "welcoming landscape that is experienced as a public park," an Amazon representative told Arlington County officials in documents obtained by the Washington Business Journal through the Freedom of Information Act. [Read more here.](#)

### Amazon's vision for HQ2 security extends well beyond its perimeter

Amazon wants to create an intelligence-sharing alliance with the law enforcement and emergency management agencies in the area of its second headquarters. In partnering with Amazon's corporate security, Arlington police could get access to some of the company's best practices, tech and intelligence gathering methods, according to documents obtained through a Freedom of Information Act request. The company has offered to give Arlington pointers in setting up its emergency operations center. [Read more here.](#) One of the brainstorming ideas is for a security robot, which are used in some public spaces. [Read more here.](#)



## Here's how much your commute to HQ2 might cost — depending on where you live and your mode of choice

With fewer than 2,000 planned parking spaces under the first pair of HQ2 towers, most Amazon.com Inc. (NASDAQ: AMZN) employees probably

won't be driving to work. What's the best option in lieu of a car? Take some comfort, Seattle transfers and new Amazon hires. Arlington County officials have done some of the legwork by calculating the cost and travel time for taking public transit from a variety of locations in Greater Washington. And Amazon is expected to subsidize some of the commuter costs. [Read more here.](#)

## CRYSTAL CITY (AND NEARBY) IN DEVELOPMENT

### HQ2-area property owners agree to help fund density study

Arlington officials have secured \$475,000 from several Pentagon City property owners to fund a new study of the area's density regulations, amidst concerns from county planners about the size of some development pitches in the wake of Amazon.com Inc.'s arrival. The County Board signed off on a deal with six of the neighborhood's largest landlords on Saturday: Federal Realty Investment Trust, Simon Property Group, Brookfield Properties, JBG Smith Properties, Dweck Properties, and the Vucich family. The companies will each pay different amounts based on the size of the properties they control — JBG Smith will chip in the largest payment at \$185,300. Arlington staffers expect the review will primarily focus on the area's transportation network, in addition to "other local infrastructure and community facilities necessary to support growth," according to the staff report. County officials expect the study will take about a year to complete. [Read more here.](#)

### Crystal City BID votes to rename itself National Landing BID

On January 23 the Board of Directors for the Crystal City Business Improvement District (BID) approved a resolution to change the organizational name to the National Landing Business Improvement District. The Board opted for the new name in recognition of the BID's upcoming geographic expansion and as a reflection of the increasingly interconnected character of the Crystal City, Pentagon City and Potomac Yard communities. This resolution marks the culmination of a robust public process in which the BID sought and received broad support from area residents and local civic organizations.

Pending approval by the Arlington County Board and a formal vote by the BID's full members at its Annual Meeting this spring, the National Landing name will be utilized as an umbrella term for Virginia's most vibrant and largest walkable downtown. It will not replace the existing neighborhood names of Crystal City, Pentagon City and Potomac Yard, which each maintain their own unique identities and distinct characteristics. [Read more here.](#)

### JBG Smith Development Timeline

- Ongoing Construction at Central District Retail 1550 & 1770 Crystal Dr; Key Completion Milestones:
  - Crane Removal April 2020
  - Top Out April/May 2020
  - 15th Street Sidewalk August 2020
  - Crystal Drive Sidewalk September 2020
  - Crystal Drive Travel Lane September 2020
- Turnover of Crystal Square to new tenants (e.g., grocery) anticipated by summer; their buildout could continue till the end of 2020.
- 1900 Crystal Dr: County Board consideration March 2020
- Riverhouse Apartments - on 7/22, an application for revisioning was submitted; review may be delayed due to new density study
- 2121 Crystal Dr (Dining in the Park) – 4.1 approved, minor site plan amendment forthcoming

- Preliminary 4.1 applications for 2000 & 2001 South Bell, 223 23rd St. & 2300 Crystal Dr, and 2525 Crystal Dr were submitted on 10/1;
- 101 S. 12th St: preliminary 4.1 application for submitted
- In total, these projects consist of ~5M sf of new development, including: – ~4K apartment units; – ~800K sf of commercial office; – ~330K sf of ground floor retail

### NEW! Immediate Care Practice Now Open

Conveniently Located in Crystal City; 764 23rd Street South, Arlington, VA 22202 | Metered parking; 703.717.7000; [vhcphysiciangroup.com/immediatecare](http://vhcphysiciangroup.com/immediatecare)

Open 8:00 am - 8:00 pm 7 days a week (please call ahead for holiday schedule). No appointment necessary. Walk-ins welcome. All ages welcome.

Conditions Treated:

- Bacterial infections
- Cold/flu
- Ear infections
- Eye infections
- Minor burns
- Minor lacerations
- Sore throats
- Urinary infections
- Services Offered:
- School physical exams
- Sports physicals
- TB tests
- Workers' compensation exams
- X-rays
- Family medicine by appointment coming June 2020

OB/GYN by appointment coming June 2020

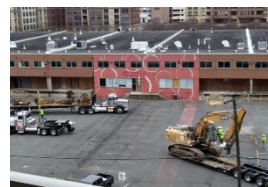
### Virginia Hospital Center to Open Primary Care Service in Crystal City This Summer

Virginia Hospital Center recently opened a new immediate care facility in the Crystal City area, but plans are already in the works to expand the facilities. Virginia Hospital Center Immediate Care will be adding family medicine and OB/GYN care

(by appointment) in coming months," a spokesperson told ARLnow in an email. Staff at the center said the plan is to start offering primary care services in June. The center at 764 23rd Street S., which opened early January, currently operates as an immediate care facility for non-emergency conditions. This includes things like colds and flus, minor lacerations or burns, and ear, eye or urinary infections. [Read more here.](#)

### Construction on MetPark Amazon HQ2

Demolition of the buildings started in January and is planned to take place behind the fences that are



there now. Their plan is to have parking at Pen Place during the first year and trucks coming from 395 going down 13th St, going along Eads, leaving to go to Route 1 via 15th St during the project. More details in [ArlNow.com article.](#)

### Sport&Health Crystal Park to Expand in Advance of Amazon HQ2

US Fitness Holdings, LLC, has announced that it will expand the Sport&Health club at Crystal Park (2231 Crystal Drive, Arlington) in conjunction with the JBG development of National Landing. Sport&Health Crystal Park currently includes an indoor salt water pool, a Cycle Studio, Mind&Body Studio and Group Fitness studio in addition to the newest cardio and strength equipment. [Read more here.](#)

### CBRE's Hana Makes East Coast Debut in JBG Partnership

CBRE's newly launched flexible office space unit, Hana, is opening its first outpost on the East Coast via a roughly 40,000-square-foot presence in JBG Smith's 2451 Crystal Drive in Arlington, Va. The firm has partnered to take nearly 39,000 square feet at JBG's 11-story, 400,000-square-foot office property in National Landing. Like Hana's other locations in Dallas and Irvine, Calif., the space will offer flex-office leasing to large enterprises, mid-tier companies and startups. [Read more here.](#)

### Artificial Intelligence Company in Crystal City Plans Expansion After Big Investment

Scoutbee, a tech company based in Crystal City, is looking to scale up after scoring \$60 million in a fresh round of funding. The company builds software that links artificial intelligence (AI) technology and big data to create more efficient supply shipments. The technology can track trends and make predictions based on extensive data about where certain types of supplies are needed. The firm, founded in 2015 and also based in Germany, has contracts with high-profile companies like Audi, Airbus and Bosch. The new funding will allow the company to expand by 100 employees and double down on research and development for new products, the company said in a press release. The company currently has offices at 2550 S. Clark Street in Crystal City. [Read more here.](#)

### Getting to Know the DMV: Crystal City

GWU posted a fun article with photos on Crystal City and the transformation going on in our neck of the woods. [See it here.](#)

### Census Director Attends Grand Opening of Crystal City Area Office

Arlington is proud to welcome the Crystal City Area Census Office to our community! Census Director Dr. Steven Dillingham joined Arlington Census partners and others at the grand opening of the office on Jan. 29. Dillingham had just returned from Toksook Bay, Alaska, where the 2020 Census kicked off last week, with the message that the Census will be launching in about six weeks. That's when Arlingtonians will receive an invitation to participate in the 2020 Census in their mailboxes. The invitation will include information on how to complete the census online or by phone. This is the first time the Census Bureau is offering the online option and it is committed to confidentiality and to protecting the census data, Regional Director Fernando Armstrong said. [Read more here.](#)

### Census: Crystal City Has the Worst Response Rate in the County

Be sure you, your partners, and your kids (no matter how young) are all counted this year. Here's an easy New Year's resolution: Make sure you and everyone in your home are counted in the 2020

Census! Getting a complete and accurate count in 2020 requires everyone's help, and everyone in Arlington counts! Your response plays a critical role in how much federal funding will be allocated to Arlington for schools, health clinics, fire departments, roads and much more. Look for a letter in mid-March inviting you to participate in the 2020 Census. Then, follow through on that New Year's resolution and make sure you are counted!

**APRIL 1, 2020 IS CENSUS DAY!** The U.S. Census counts every resident in the nation, including right here in Arlington County. As mandated by the U.S. Constitution, America gets just one chance each decade to count its population. The collected data helps to determine things like the number of seats Virginia has in the House of Representatives, and how to distribute federal funds to local communities like ours.

Census 2020: Safe. Important. Confidential. [Learn more about how Arlington Counts.](#)

### Virginia's \$3.7 billion rail plan called a 'game changer.'

Virginia closed 2019 with a bold pledge to significantly grow passenger rail service in the commonwealth this decade by building a new rail bridge over the Potomac River, adding new rail track in the Washington-to-Richmond corridor and buying hundreds of miles of passenger right of way from CSX. The \$3.7 billion plan, announced Dec. 19, will put Virginia in control of rail service increases, allow Amtrak to double the number of trains operating in the state and expand Virginia Railway Express service to the nation's capital beyond peak rush hour within a decade. The infrastructure investments will result in a dedicated passenger-rail corridor between Franconia and the District, allowing for more passenger trains. VRE's Fredericksburg line, which uses the CSX tracks, will see an increase in service of 75 percent, or 15 intervals, during peak periods by the plan's completion. VRE will also be able to introduce weekend service. [Read more here.](#)

**Note:** *The announcement December 19 that Virginia will pay for construction of the two Long Bridge tracks and complete the four rail tracks between the bridge and Richmond has significant importance for everyone. But it also clearly stated that there will be a 75% increase in frequency of Virginia Rail Express commuter trains, including weekends, a doubling of Amtrak service, and the potential addition of MARC trains as far as Crystal City. This increase reinforces our concerns for the impact on our area. Moreover, adding VRE service on the weekends*

would negate the current CSX agreement to ban horn blowing on weekends and late at night when the VRE station in Crystal City is closed. We have sent a letter from the CCCA and the Crystal Park Condo Unit Owners Association emphasizing that we are not against the improvements and asking for responses to our concerns. We are only asking for safety and mitigation of sound, vibration, pollution.

## Cemetery Expansion, Columbia Pike Realignment Moving Closer to Reality

The Arlington County Board is set to vote this weekend on a new Memorandum of Agreement with Arlington



National Cemetery, ahead of work on a new cemetery expansion project that will bring major changes to the eastern end of Columbia Pike. The project, which has taken shape over the past four years, would add 70 acres to the southern portion of the cemetery, including 37 acres of additional burial space, intended to help the nation's most hallowed ground continue burials through at least 2050. The expansion will add another 60,000 burial plots, by converting the former Navy Annex site, as well as current portions of Southgate Road and Columbia Pike, into cemetery space. [Read more here.](#)

## Wharf developer pitches mixed-use for Arlandria shopping center near HQ2, Va. Tech campus

Madison Marquette is now looking to revive plans to redevelop an Arlandria shopping center into a mixed-use community. The D.C. developer filed preliminary plans with Alexandria earlier this month for the project, looking to completely overhaul a Mount Vernon Avenue shopping center near Four Mile Run Park, now called Del Ray North. It's currently home to a MOM's Organic Market, but has seen a variety of retail vacancies recently. It's owned by Finmarc Management, which controls a

variety of other shopping centers around Greater Washington. The plans call for a total of 624 apartments across two phases of development, as well as 44,500 square feet of ground-floor retail. [Read more here.](#)

## Homeowners in Amazon's ZIP code didn't want to sell in 2019

The housing numbers for 2019 are in, and they show that supply around Amazon's new headquarters was incredibly tight in 2019. Just 135 homes were sold in the 22202 ZIP code — an area that encompasses Pentagon City, Arlington Ridge and Crystal City — last year, the lowest number for any year in the decade, according to data provided by MarketStats by ShowingTime, based on listing activity from Bright MLS. It was a 40% drop in home sales from the previous year, when 226 homes were sold. In 2017, 213 homes were sold in that ZIP code. The reason appears to be that owners in the 22202 aren't interested in selling. [Read more here.](#)

## Message from JBGS: Retail Update

“As you know, JBG Smith is constructing Central District Retail, which will feature approximately 109,000 square feet of entertainment and destination retail. It will be anchored by an Alamo Drafthouse Cinema and feature a 17,000 square foot specialty grocer, a pharmacy, restaurants and bars, and other experiential offerings. Today we are nearly 80% leased with a variety of tenants and will be releasing names as soon as we are able to.

We expect to start construction on 1900 Crystal Drive this year. The project will be an architecturally-distinct development consisting of two residential towers and 34,000 square feet of street-level retail. Once completed in 2023, 1900 Crystal Drive will fill a longstanding retail and activity gap along Crystal Drive.

The first phase of Amazon's new headquarters at Metropolitan Park will include an additional 69,000 square feet of street-level retail. In its initial headquarters designs, which were recently presented to the community and approved by Arlington County, Amazon has pushed the bulk of its lobby functions, including reception, to the second floor, which allows for largely uninterrupted retail on the ground floor. Amazon treats street-level retail as an integral amenity for its employees

and a way to connect with the surrounding community, and their priority is to partner with local retail tenants. They encourage their employees to be part of the community and local economy.

In addition to Central District Retail, we have submitted plans for six additional mixed-use projects totaling more than 4.5 million square feet within National Landing. In keeping with our commitment to placemaking and cultivating dynamic 18-hour neighborhoods, each of these new developments will incorporate a significant amount of retail into the base. This will allow us to add approximately 225,000 square feet of shops, restaurants, entertainment and other community amenities organically over time across all of our new development projects.”

### Coming Thursday-Sunday, February 6-9: McNamara’s Pub Grand Opening

McNamara’s Pub, the new Irish restaurant at 567 S.23rd Street, is already operating, but its official opening is February 6.

### The Freshman Ready to Open

With the temporary pop up location closed in The Underground, The Freshman is hoping to open on Crystal Drive by spring, or perhaps as early as March.

### JBG Signs Lease for Full Scale Restaurant at 2121 Crystal Drive

Although a minor site amendment is needed, JBG Smith is hoping to construct the site in the middle of the 2121 park on Crystal Drive for a full scale restaurant to open by the end of 2021, offering breakfast, lunch and dinner. No chain restaurant, but lots of trees and outdoor eating space.

### Rite Aid Closing in the Underground

Although **Message from JBG Smith:** “We were recently informed by Rite Aid that it intends to permanently close its 1671 Crystal Square location prior to the expiration of its current lease. At JBG SMITH, we understand that a community-servicing pharmacy is an essential ingredient of any great neighborhood, and we are excited to share the news that we have reached an agreement with another pharmacy to open a location on the same

block. We expect the new pharmacy will be ready to open in the late summer or early fall.

Given that Rite Aid could be departing as early as February, we recognize that there may be a temporary gap in the availability of pharmacy services on the block. You can be assured that we are exploring a number of potential options that would eliminate or at least significantly reduce the length of that gap. In the meantime, here is a short list of other pharmacies in the immediate vicinity:

CVS – 2400 Richmond Hwy

CVS – 1201 S. Hays Street, next to the Pentagon City Metro Station

Rite Aid/Walgreens – 1301 S Joyce Street

We will share any updates with the community as we learn more. As always, please don’t hesitate to reach out with any questions you may have.”

Taylor Lawch | Vice President, Development

[tlawch@jbgsmith.com](mailto:tlawch@jbgsmith.com)

### Cosi closes on Crystal Drive

The Cosi restaurants in Crystal City (2011 Crystal Drive) and Virginia Square (3503 Fairfax Drive) appear to have closed in January.

### Long-Delayed Bowling Alley Hopes to Roll Into Crystal City in June

Bowlero — a bowling alley, arcade and restaurant — is hoping to roll into 320 23rd Street S. in June. That’s according to a staff report to the Arlington County Board. The Board approved a renewal of the site’s use permit at its Jan. 25 meeting. Bowlero’s new expected opening comes after striking plans to open in 2019. [Read more here.](#)

### Stores Closing at Pentagon City Mall

Young adult fashion retailer Abercrombie & Fitch and watch shop Swatch are no longer open in the Fashion Centre at Pentagon City. A mall employee told ARLnow that both stores shuttered this week. The closures come amid a rash of retailers closing up shop, in part because of the rising popularity of e-commerce, dubbed by some as a “retail apocalypse.” Earlier this year, jeans company True Religion also left the mall, an employee at a True Religion store in Maryland said. Greeting card and stationery store Papyrus, which is closing all of its

stores, is currently holding its final sale at the Fashion Centre. [Read more here.](#)

### Hops Closes in Potomac Yard

“Potomac Yard microbrewery Hops Grill and Brewery officially closed its doors for good on December 29, 2019, according to a news release. The brewery’s remaining assets went up for auction to the general public through a partnership with Auction Nation.” . [Alexandria Times]

*Many leases are expiring in Potomac Yard prior to redevelopment. There are 4 vacant store fronts now though Virginia Tech is going to occupy some of that space temporarily.*

## ARLINGTON COUNTY ISSUES

### Absentee Voting Dates & Deadlines for March 3, 2020 Democratic Presidential Primary

#### Absentee Voting – By Mail Deadlines

*Notice to voters using US mail service: Current USPS delivery standards for First Class mail is 2-5 days. Take this into consideration, and allow ample time to apply for and mail-in your ballot so that it is received by the Office of Elections by Election Day at 7:00 pm.*



Application for a mail ballot must be received in our office via fax, email, or mail by 5pm on Tuesday, Feb 25<sup>th</sup>.

Ballots must be received to be counted by 7pm on Election Day – Tuesday, March 3<sup>rd</sup>

#### Absentee Voting – In Person runs from:

Thursday, Jan 16<sup>th</sup> until 5pm on Saturday, Feb 29<sup>th</sup>.

Verify where to vote and what’s on the ballot [here](#).

### Libby Garvey Named 2020 Arlington County Board Chair

The Arlington County Board unanimously elected Libby Garvey its 2020 Chair on January 2. The Board named Erik Gutshall vice- chair. First elected to the Board in March 2012, Garvey served as County Board Chair in 2016. She served as

Chair five times during her 15 years on the Arlington School Board. [Read more here.](#)

### Arlington Welcomes New Economic Development Director

While he may not have moved many personal mementos in yet, he’s not wasting any time getting started as the Arlington Economic Development’s new director. The Lynchburg, Virginia native began in the position in mid-January, and he’s already meeting with commissioners, stakeholders and business owners in an effort to learn just what the talk is out there about his new home. [Read more here.](#)



### Senior Arlington Staff Get Pay Raise With Contract Renewal

Several senior Arlington County employees left the Saturday, Jan. 25, Arlington County Board meeting with renewed contracts and some notable pay bumps. The County Manager, County Attorney, County Auditor and Clerk to the County Board all had their contracts unanimously approved in a 5-0 vote with no discussion. [Read more here.](#)

### Arlington to Increase Speeding Fines in Some Residential Neighborhoods

The Arlington County Board today voted to establish a \$200 additional speeding fine zone for residential neighborhoods that meet certain criteria. The move came in response to complaints from residents about speeding and pedestrian safety.

To qualify for the designation, a road must be in a residential area; must be classified as a neighborhood principal, minor arterial or major arterial street on the County’s road classification map and must have a documented speeding issue.

A documented speeding issue exists when the County has speed data, collected within five years from the day of the “\$200 Additional Speeding Fine Zone” evaluation, showing speeding on the segment; there is a recorded traffic evaluation produced within five years from the day of the “\$200 Additional Speeding fine Zone” evaluation, that includes speeding as one of the issues and the County has written confirmation from the Police Department that speeding has been observed through documented transportation safety activities.



**Has anyone reported speeding on Crystal Drive? [Read more here.](#)**

### Commercial, Residential Property Values See Measured Growth for 2020

Property values in Arlington rose for 2020, continuing steady growth from 2019 in both the residential and commercial sectors. Although the growth will result in additional revenue, the County faces continued funding choices in the coming fiscal year. Overall, the total assessed value of all residential and commercial property increased by 4.6 percent, compared to 3.5 percent the previous year. Commercial properties saw the largest increase at 4.9 percent overall, while residential properties increased 4.3 percent. [Look up your 2020 property assessment](#) (available Friday, Jan. 17, at 11 p.m.)

### Annual Report: Working Toward Fair Housing

Arlington found itself at a critical juncture during fiscal year 2019: Arlington, as a highly desirable community, faced an evolving economy, growing population, and a housing ecosystem under pressure. The result was tighter housing supply and rising costs in and around Arlington. While we dedicate significant resources to developing housing affordable to low- and moderate income residents, Arlington believes that a large component of an equitable community is about ensuring fair housing and providing opportunities for all residents to have housing choices. Our FY2019 Affordable Housing Master Plan Annual Report highlights our achievements in a wide array of housing-related activities, including those involving fair housing. [Read the full report and real-life stories in our online citizen summary here.](#)

### Arlington Community Emergency Response Team (CERT)

The CERT mission is to save lives and reduce injuries in a major disaster in Arlington County, when professional responders are delayed in arriving, and when activated by Arlington Emergency Management. In less-than-major disaster



situations, CERT-trained volunteers use their skills to save lives and reduce injuries, acting as Good Samaritans, until the professional first responders arrive. We prepare ourselves, our families, and help prepare our neighbors, and we are ready to assist all of these should the need arise.

The Arlington CERT will be having its biannual (Spring/Fall) eight-week basic training at the Arlington County Fire Training Academy, 2800 S Taylor Street, starting in April and September. The classes meet once a week—either Tuesday or Thursday—with two Saturdays. The classroom and hands-on training cover topics such as disaster preparedness, disaster medical operations, light search and rescue, team organization, disaster psychology, fire suppression and terrorism.

For more information and to register, visit the [website](#).

### APS Discontinuing Elementary Summer Enrichment Programs

Citing staffing challenges and future budget cuts, Arlington Public Schools is discontinuing its summer enrichment programs for elementary students this year. While axing the summer programs — which offered advanced classes on computer programming, math and world geography — APS said it will continue providing make-up classes and resources for students who are falling behind. Outdoor Lab sessions will continue as well. [Read more here.](#)

### Which ACPD Dress Uniform Do You Like Best?

The Arlington County Police Department is considering changing up the look of its dress uniform. The “Class A” uniform — which differs from the standard navy patrol uniform worn by most officers in the field (the patrol uniform is green for K9 handlers) — is due for a change because its heather blue color is “increasingly difficult to obtain” from distributors, ACPD said. The new options are navy blue and gray. The department is testing out both before reviewing feedback and making a decision. [Read more here.](#)

## OTHER ISSUES

### Project Journey Construction

#### Details

Beginning on or about Monday, January 6, the outer lanes of the Terminal B/C Arrivals (lower) level roadway used for private vehicle and ride app pickup will close from Midnight to 9:00 a.m. Monday through Friday for construction. All passengers arriving at Gates 10-45 and being picked up by a private vehicle or Lyft/Uber/Via must be picked up on the Ticketing/Check-In level (Level 3). The taxi pickup location will remain unchanged, outside Baggage Claim (Level 1). Terminal B/C serves passengers of the following airlines: Alaska, American, Delta, JetBlue, United. On Saturday and Sunday, private vehicle and ride app pick-up will be available on the Baggage Claim level. Closing the roadway will provide space for construction crews to lift steel beams overhead for two New Security Checkpoint buildings. The roadway closure will be in effect Monday through Friday mornings for several months.

### JBG Smith's affordable housing endeavor collects \$104 million, makes first loan

The affordable housing investment venture co-

founded by JBG Smith Properties (NYSE: JBGS) has raised \$104 million and invested in its first project, the developer announced late Wednesday. As one of its first projects, the Washington Housing Initiative, as it's been dubbed, will loan \$15.1 million to the nonprofit Alexandria Housing Development Corp., which will use those funds to buy the Avana Alexandria Apartments. The Washington Business Journal had previously reported on the sale of owner Greystar's 326-unit complex near Fairlington, though at the time WHI's contribution was not disclosed. Once sold, it will be renamed the Parkstone Apartments. [Read more here.](#)

### Save the Date: Valentine's Market

Friday, February 14, 4:00 - 8:00 P.M. at The Grounds, 1102 S. Eads Street. Join us at The Grounds in Crystal City for an evening of wine & beer tastings and shopping from local crafts and treat vendors. There will also be a cash bar, s'mores, and food trucks, powered by Curbside Kitchen, so you can make an evening of it! [Learn More.](#)

### Crystal City BID Updates

You can [subscribe to our newsletter](#), follow us on [twitter](#) or [instagram@ccbid](#)), and Like Us on [Facebook](#) for the most current information.

## CRYSTAL CITY CIVIC ASSOCIATION BOARD

President  
Vice President for Policy & Planning  
Meeting Secretary  
Communications Director  
Membership Liaison

Carol Fuller  
Judy Freshman  
Patricia Heath  
Jacquelyn Bianchini  
Zach Komes

\*To renew membership via check, make checks payable to:

*Eric Cassel*  
Treasurer, CCCA  
1300 Crystal Drive  
Arlington, VA 22202

