



## George Washington Memorial Parkway

CRYSTAL CITY CIVIC ASSOCIATION  
MAY 19, 2021

# AGENDA

- Who we are – Introduce the team
- Park Priorities and Actions Handbook
- Park updates
- Great American Outdoors Act
- Question and Answer Opportunity



**George Washington Memorial Parkway** is a scenic roadway honoring the nation's first president, that protects and preserves cultural and natural resources along the Potomac River below Great Falls to Mount Vernon, and is part of a comprehensive system of parks, parkways, and recreational areas surrounding the nation's capital.

- Arlington House, The Robert E. Lee Memorial
- Clara Barton National Historic Site
- **George Washington Memorial Parkway**
- Lyndon Baines Johnson Memorial Grove
- Theodore Roosevelt Island
- Dyke Marsh Wildlife Preserve
- More than 7,300 acres
- More than two dozen associated sites

# WHO WE ARE



# PRIORITIES & ACTIONS HANDBOOK

## **Your Voice Matters**

**Your voice holds immense power.**

## **Robust Workforce**

**Foster a work environment where employees thrive.**

## **Stewardship**

**We seek out and consider input from divisions and partners on decisions that will impact the park.**

## **Partnerships**

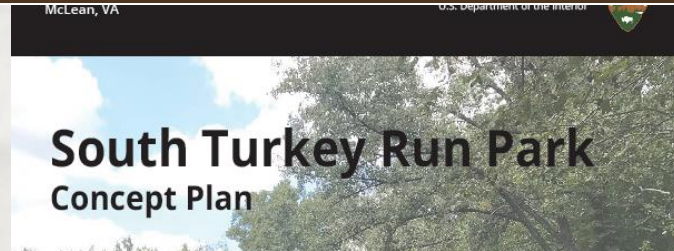
**We embrace collaboration, trust, and open communication with our partners to achieve shared goals.**



# STEWARDSHIP



George Washington Memorial Parkway  
2017–2022  
**Strategic Plan**  
Revised July 11, 2017



**Mount Vernon Trail Corridor Study**  
George Washington Memorial Parkway



**Glen Echo Park**  
Traffic and Pedestrian Safety  
Context Sensitive Solutions Assessment

Project Summary

May 2019



U.S. Department of Transportation  
Federal Highway Administration

Kimley-Horn

May 2020

50 YEARS  
U.S. Department of Transportation  
Volpe Center



# COMPLIANCE APRIL 2021

## Internal (24)

- Great Falls Roof and HVAC
- Belle Haven Park Entry Sign
- Turkey Run Pavement Project
- Asphalt Repairs on MVT
- MVT - Install new caution signs at Mt Vernon Trail Bridges
- POHE - Potomac Heritage Trail Washout
- GWMP North Section - Windy Run Car Removals
- South Parkway – Belle Haven Intersection
- *South Parkway and MVT Rehabilitation*

## External (13)

- Fairfax County Scotts Run / Carde rock Sewer
- Spout Run Eruv Special Use Permit
- Netherlands Carillon Plaza Rehab
- MVT - Peter Webster Memorial
- *I-495/American Legion Bridge – MDOT-SHA*
- *I-495 NEXT – VDOT*
- *Reagan Airport – MWAA*
- DC Potomac Interceptor – DC Water
- Crystal City VRE Improvements – FTA/VRE
- Highway Deed Easement East and West Abingdon
- *Crystal City to Reagan National Airport Intermodal Connector*
- WMATA - Trolley Line Bridge @ Wilson Lane
- *City of Alexandria City Potomac River Generating Station Power Plant Redevelopment*

## Upcoming (14)

- Repair Stone Guard walls Near TRI
- *Arlington County - Rt 233 Viaduct Bridge*
- *WMATA Canopies on Memorial Ave*
- New Counters Along the Parkway
- Great Falls Park Parking Lots Mill and Overlay
- Pavement Striping from Spout Run to Alexandria (South Bound)
- Replacement of W-Beam Standard Barrier to Steel-backed Timber (SBTA) Guardrail
- Remove or Prune Hazardous and Diseased Trees
- Repair Potable Water Piping System to Fort Hunt Park Construction

## Legacy & Ongoing (9)

- Arlington Memorial Bridge
- Memorial Circle Safety Improvements
- Arlington House
- North Parkway Rehab
- *Potomac Yard Metro Station – WMATA/COA*
- *MVT Bridge #12 EA*
- *Langley Forks-Langley Oaks Land Exchange*
- *Arlington County Boathouse*
- *Alexander Renew*





# OPEN SPACE:LIVIABILITY-22202

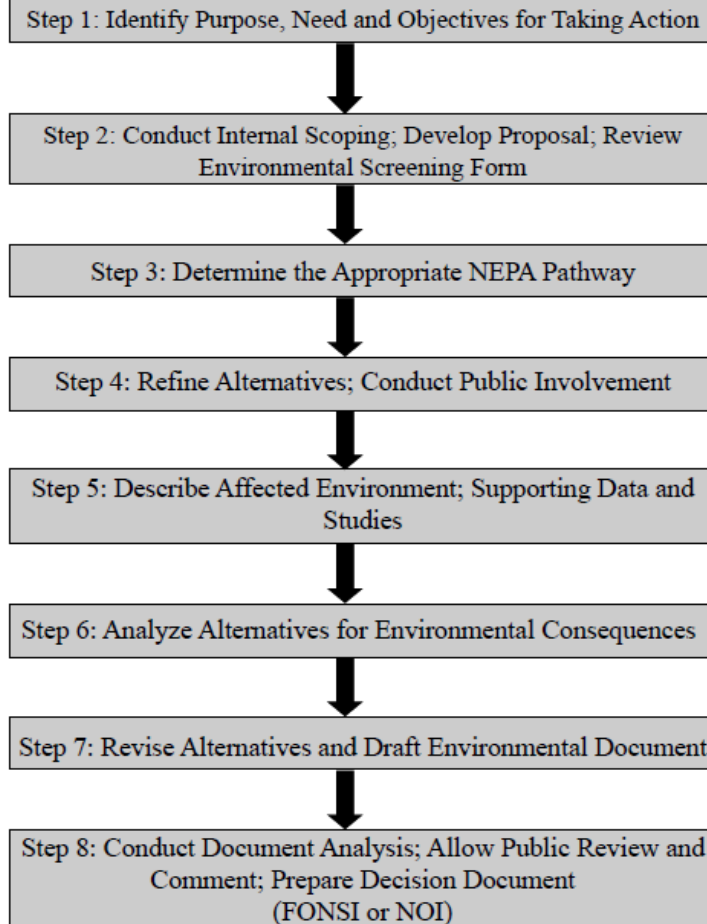
- Connecting residents to the natural world and enhancing biodiversity throughout 22202
- Re-envisioning Virginia Highlands Park as the backyard for the Pentagon City community
- Developing a holistic approach to planning Crystal City Parks
- Exploring the possibility for a publicly accessible greenway from Roaches Run Waterfowl Sanctuary along the railroad tracks to the southern end of Crystal City

# NPS PLANNING PROCESS

CC2-DCA Intermodal Connector

Arlington County and Vicinity Non-Motorized  
Boathouse

## The NEPA Planning Process (National Environmental Policy Act)



Gravelly Point and Roaches Run



# ROACHES RUN

- (2012) Gravelly Point and Roaches Run Project Scoping
- Project Next Steps
- (2010) Cattail Marsh Restoration
  - (Photo: Roaches Run Restoration Planting April 2010)
  - Cattail Marsh Test Plots and Replanting





# ROACHES RUN

## TREATING PHRAGMITES AT ROACHES RUN



**CURRENT CONDITIONS**



**PHRAGMITES ALONG  
EASTERN SHORE**



# ARLINGTON COUNTY BOATHOUSE



FIGURE 9. ALTERNATIVE C: COMBINATION OF UPPER AND LOWER ROSSLYN SITES

## UPPER AND LOWER ROSSLYN SITES

- Finding of No Significant Impact and Environmental Assessment
- Preferred Alternative: C
  - Floating Dock
  - Soft Kayak Launches at Roaches Run and Riverside
  - Boat Storage and Support Facilities
  - ADA Parking and Rigging Area
- Arlington County Boathouse Facilitation Workshop
- [Parkplanning.nps.gov](https://parkplanning.nps.gov)

# MOUNT VERNON TRAIL CORRIDOR STUDY

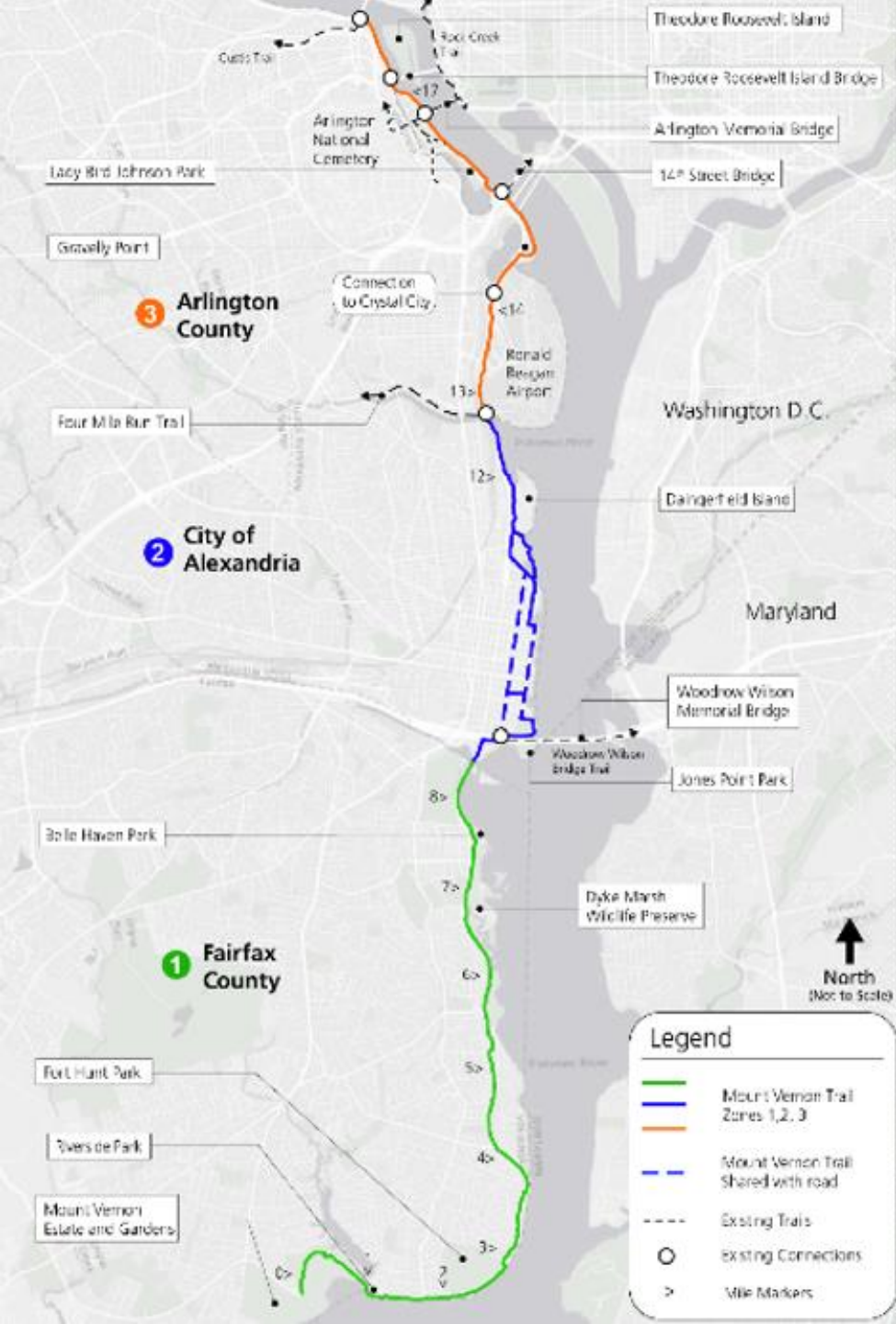
- [Parkplanning-Mount Vernon Trail Corridor Study \(nps.gov\)](https://www.nps.gov/parkplanning-mv-trail-corridor-study)





# MVT OVERVIEW

- **Zone 1** – Fairfax County Section
- **Zone 2** – Alexandria Section
- **Zone 3** – Arlington Section

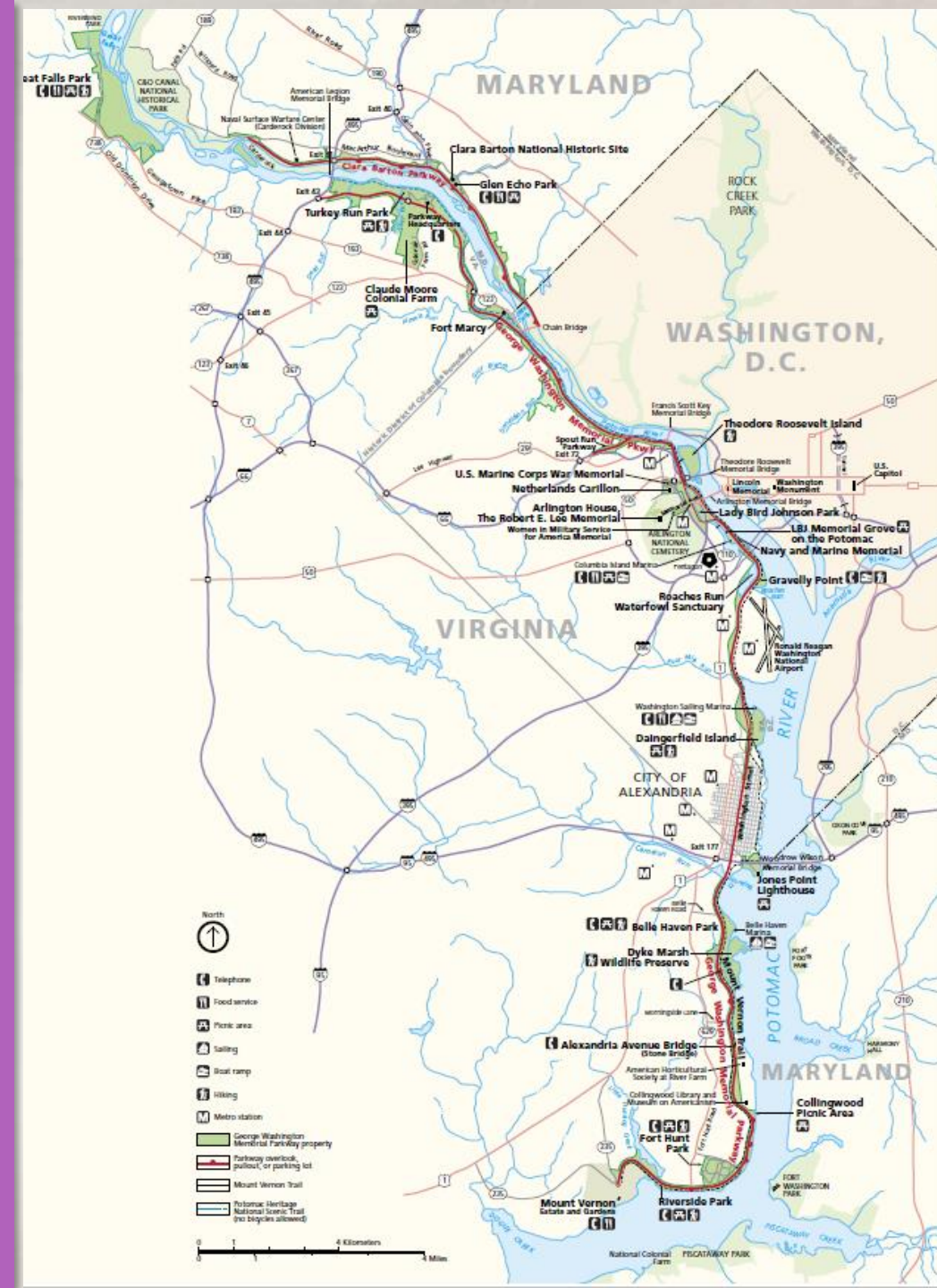
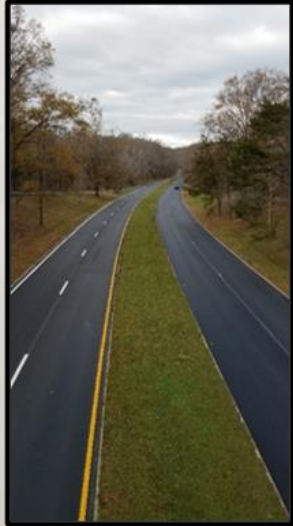


# New Connections And Potential Usage Growth Over The Next 10 Years





# 2020 PROJECTS COMPLETED

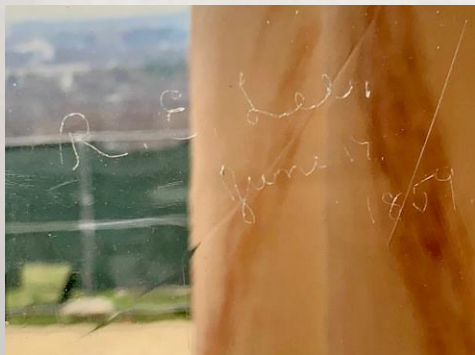




# ARLINGTON HOUSE

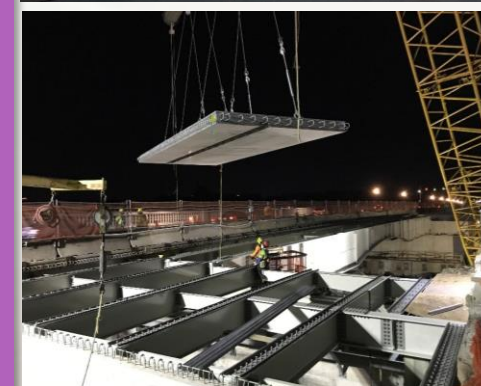
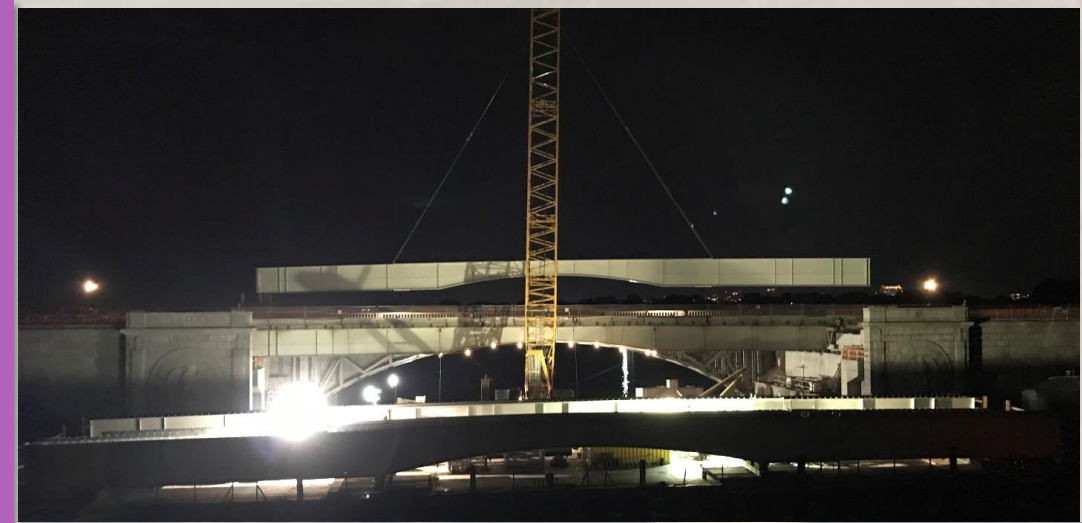


1824 John Farley Sketch of Arlington House, ARHO CLR courtesy MVLA





# ARLINGTON MEMORIAL BRIDGE



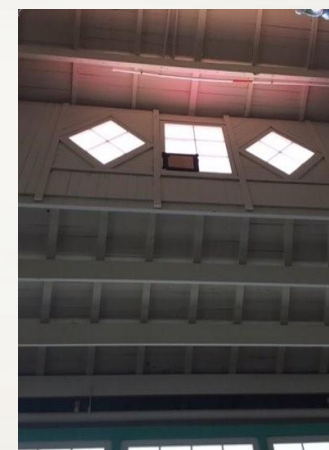
From 2018 to 2020  
rehabilitation > \$200M

- Maintained access for 68,000 vehicles
- 450 precast concrete panels placed
- Rehabilitated 1,000s of pieces of granite balustrades and benches
- Safety improvements





# GLEN ECHO CAROUSEL







# ARLINGTON RIDGE

## ➤ Netherlands Carillon





# ARLINGTON RIDGE

## ➤ Marine Corps Comfort Station

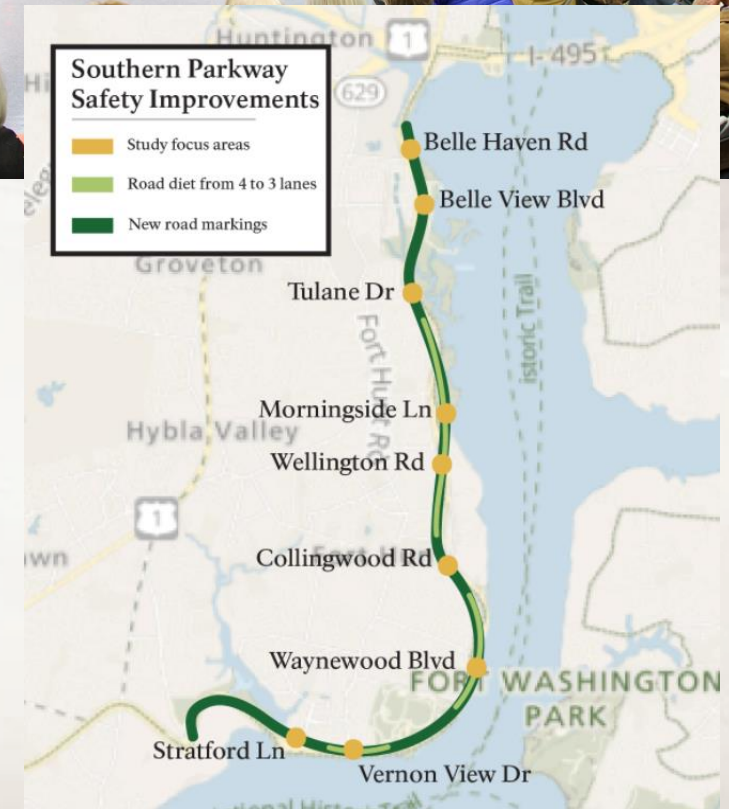
- NTP issuance early February 2021
- Mobilization by March 2021
- Estimated completion early 2022





# SOUTH PARKWAY

- South Parkway Safety Study
  - Education
  - Engineering
  - Enforcement
- (2019) Public Meeting
- (2021) Neighborhood Educational Event
- Visit [nps.gov/gwmp](https://nps.gov/gwmp)



# GREAT AMERICAN OUTDOORS ACT

- Legislation will use revenues from energy development to provide up to \$1.9 billion a year for five years to provide needed maintenance for critical facilities and infrastructure
- Deferred Maintenance (2018) totaled \$11.92 billion and can be broken into two categories:
  - Paved roads and structures: \$6.15 billion
    - Includes bridges, tunnels, paved parking areas, and paved roadways
  - All other facilities: \$5.77 billion
    - Includes buildings, housing, campgrounds, trails, water systems, unpaved roads, unpaved parking, utility systems, dams, waterways, marinas, aviation systems, railroads, ships, monuments, fortifications, towers, interpretive media, and amphitheaters



# GREAT AMERICAN OUTDOORS ACT

## The GAOA combines two conservation initiatives into one legislative package:

1. The guarantee of permanent full funding for the existing Land and Water Conservation Fund (LWCF) **and**
2. Establishment of a new National Parks and Public Lands Legacy Restoration Fund (LRF)
  - Provides the NPS up to \$1.33 billion annually from FY21-25

### FY21-22

NPS leadership will select LRF projects from existing LIC projects and PSAs.

### FY23-25

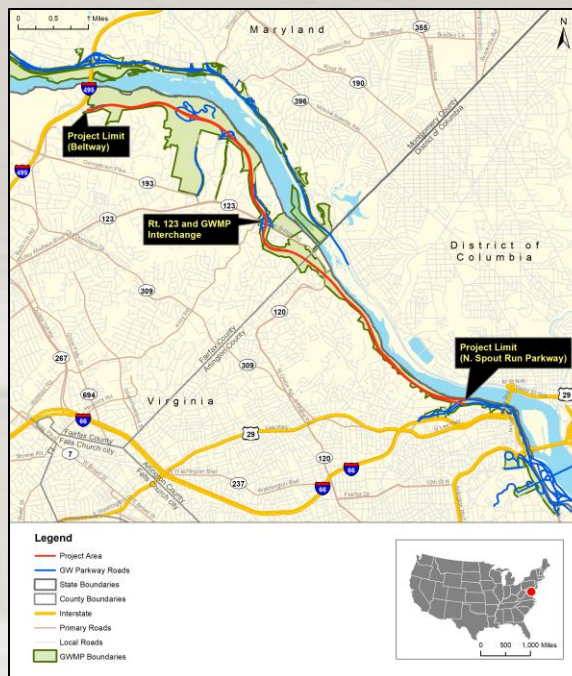
The GFIP process will identify potential projects for LRF funding.



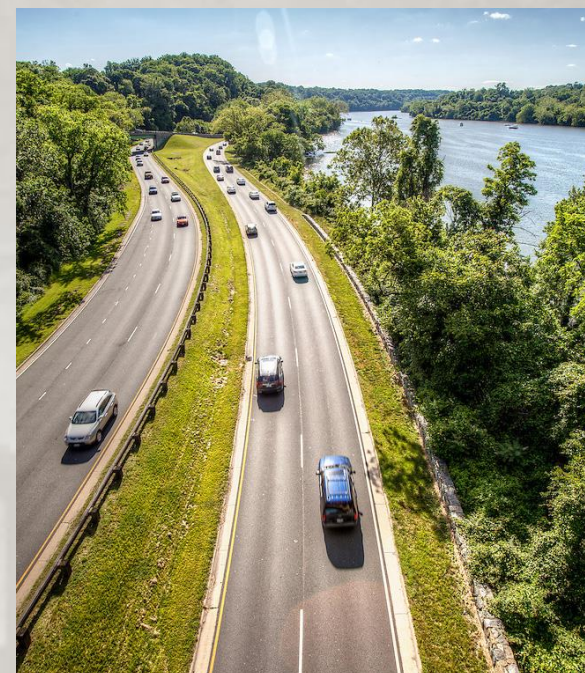


FY21

# GWMP North Section Rehabilitation



7.6 miles from I-495 to Spout Run



Northbound and Southbound lanes



May 2019 major sinkhole



Sinkhole repair to 40-feet deep outfall



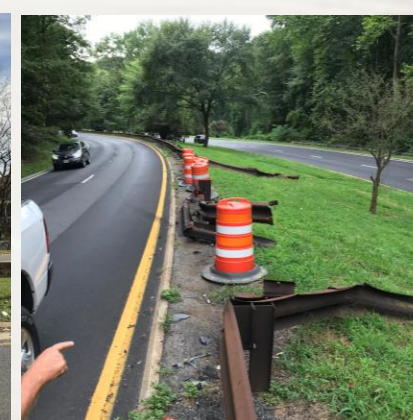
Current: Failing asphalt & drainage infrastructure



Current: Failed guardrail segments & patched roadway



Current: Deteriorated stonewall





# GAOA – LEGACY RESOURCE FUND



# SUMMARY



Studies inform current and future planning



Completed planning documents are our administrative record of decision making



External planning focused on transportation



Internal planning focused on deferred maintenance



Park priority is improving the condition of existing assets



Capital investment tied to deferred maintenance





## George Washington Memorial Parkway Headquarters

700 George Washington Memorial Parkway  
McLean, VA 22101

**Phone:** (703) 289-2500

**Email:** [GWMP\\_Superintendent@nps.gov](mailto:GWMP_Superintendent@nps.gov)