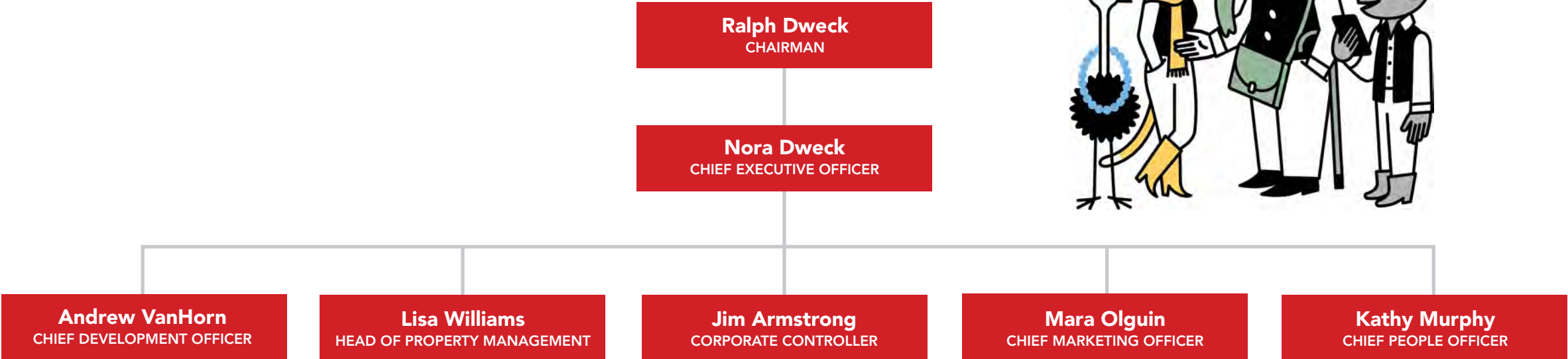


DWECK PROPERTIES PROFILE

Dweck Properties Leadership Team



**FULLY INTEGRATED
INVESTMENT &
MANAGEMENT TEAM**

- » Investment; acquisitions & dispositions
- » Asset management
- » Development and construction
- » CapEx management
- » Revenue management
- » Talent and culture
- » Marketing
- » Resident services
- » Accounting and finance
- » Building engineering
- » Property operations

Fully Integrated Investment & Management Organization

DWECK PROPERTIES

- » 275+ employees and top-tier leadership.
- » In-house investment, property management, development, marketing, accounting and finance, and operations.
- » 50+ year track record of investment in all asset types.
- » Resiliency and strong performance over multiple market cycles.
- » Strong continuity with 2nd and 3rd generations of leadership working together.

Committed to creating value, elevating lives, and generating happiness for employees and residents.



Dweck Properties Portfolio Overview

7,261
APARTMENT UNITS

PROPERTIES INCLUDE A MIX OF

- » Multi-Family
Urban High Rises
- » Mixed-Use Retail
- » Suburban Midrises

CONCENTRATED IN
GROWTH SUBMARKETS

OVER
95%

CURRENTLY
OCCUPIED

OVER
80%

METRO
ACCESSIBLE

LARGEST APARTMENT OWNER IN
National Landing



Deep Community Commitment

Family Culture and Ethos

We strive to be good, responsive neighbors

**Interest in adding to the National Landing fabric
(retail, art, beautification, etc.)**

Board member of Crystal City (now National Landing) BID since 2014

**Focus on Community Service: AFAC, APAH, New Hope Housing,
Move 4 Hunger, Planet Aid, N Street Village, House of Ruth,
Higher Achievement, and more**



Our business is real estate, but our focus is the human state.

DWECK PROPERTIES IN NATIONAL LANDING

Dweck Portfolio in National Landing



THE PENTAGON

CRYSTAL CITY LOFTS

UNITED STATES CAPITOL

THE GRAMERCY

CRYSTAL SQUARE

PARK AT PENTAGON ROW

CRYSTAL TOWERS

CRYSTAL FLATS

CRYSTAL PLAZA

THE BUCHANAN

LEGEND

 Dweck Properties

 Amazon Properties
(Leased & Owned)

VIRGINIA TECH



The Gramercy

Crystal Flats





1515

CRYSTAL SQUARE

1515

Crystal Square



Park at Pentagon Row

A photograph of a modern multi-story residential building, the Crystal City Lofts. The central portion of the building is a curved, light-colored concrete structure with a grid of large, dark-framed windows. To the left and right of this central section are wings made of red brick with smaller windows and balconies. In the foreground, there is a landscaped courtyard with green grass, several trees, and a small white fountain with water spraying upwards. The sky is blue with scattered white clouds.

Crystal City Lofts



The Buchanan



Crystal Towers



Crystal Plaza

VERTICAL DEVELOPMENT
POTENTIAL ON
CRYSTAL TOWERS EXISTING PARCELS



SITE

CRYSTAL TOWERS

Arlington, VA

Dweck Properties | Owner

Antunovich Associates | Architect ©

FEASIBILITY STUDY

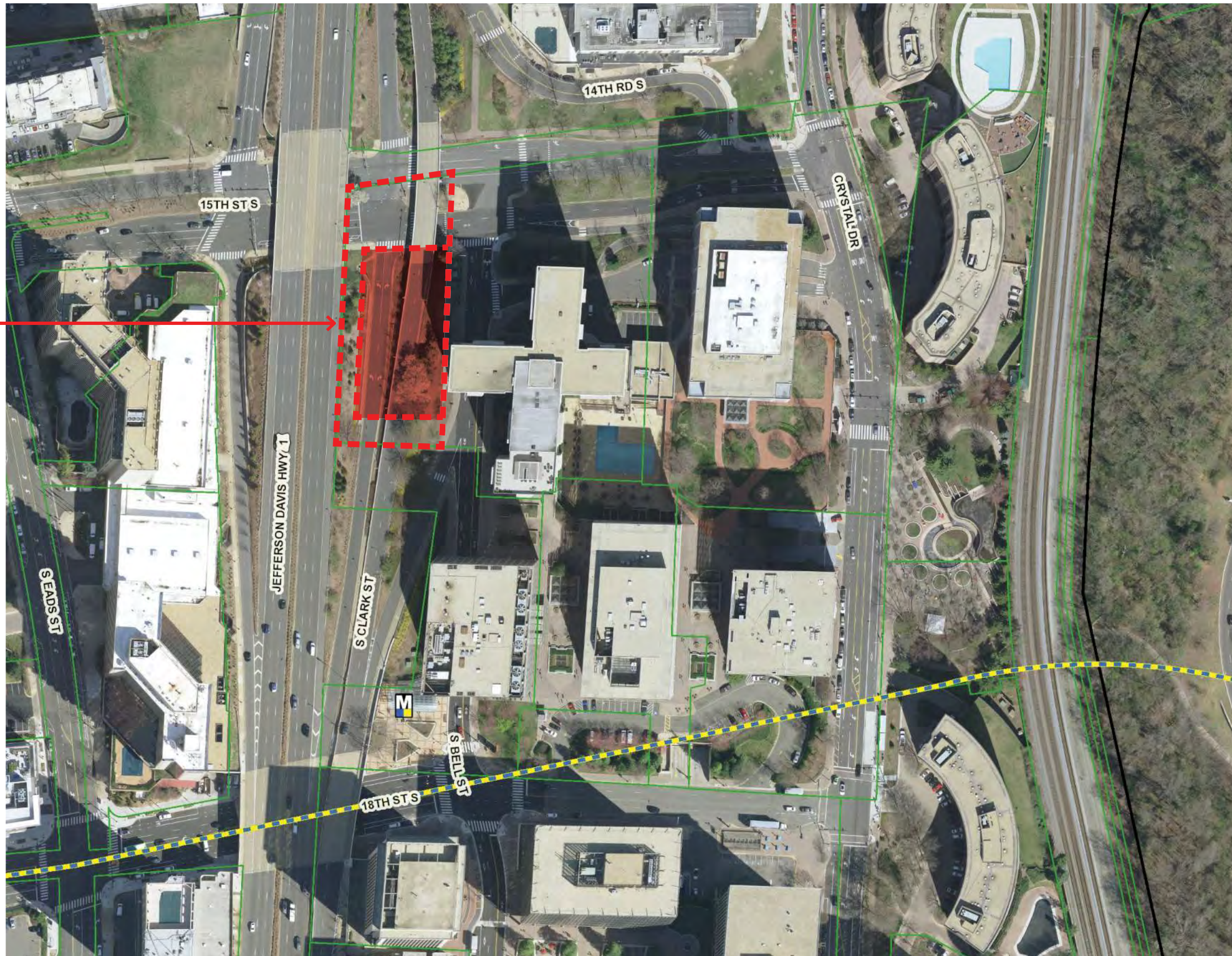


EXISTING CONDITIONS - AERIAL VIEW

JULY 25, 2019

VERTICAL DEVELOPMENT
POTENTIAL ON
CRYSTAL SQUARE EXISTING PARCELS

SITE



CRYSTAL SQUARE NEW DEVELOPMENT



SECTOR PLAN POTENTIAL AT CRYSTAL PLAZA
IN COORDINATION WITH JBG SMITH PLANS



IMAGE COURTESY OF ARLINGTON COUNTY'S ONLINE GIS MAPPING SYSTEM

SCALE: 1" = 150' 00 75 150 300



CRYSTAL PLAZA HIGH RISES
ANTUNOVICH ASSOCIATES • DWECK PROPERTIES

ENLARGED SITE AERIAL - BLOCK M

ARLINGTON, VA • JUNE 10, 2021

Construction of Amazon HQ2 from The Gramercy



Dweck
PROPERTIES

1050 17th Street, NW
Suite 300
Washington, DC 20036