

Crystal City Civic Association

Transportation Update

May 18, 2022

Long-Range Planning – Crystal City

Adopted

- Master Transportation Plan (2005-2019), including:
 - Bicycle, Pedestrian, Transit, Streets Elements
 - Parking and Curb Space Management
 - Transportation Demand Management (TDM)
- Vision Zero Action Plan (2021)
 - High-Injury Network, Intersections, focus on vulnerable street users
- Crystal City Sector Plan (2010)
 - 40-year plan with street-specific recommendations
 - Focus on Complete Streets and developing multimodal system
- Crystal City Multimodal Transportation Study (2010)
 - Analysis and recommendations informing the Sector Plan

Upcoming

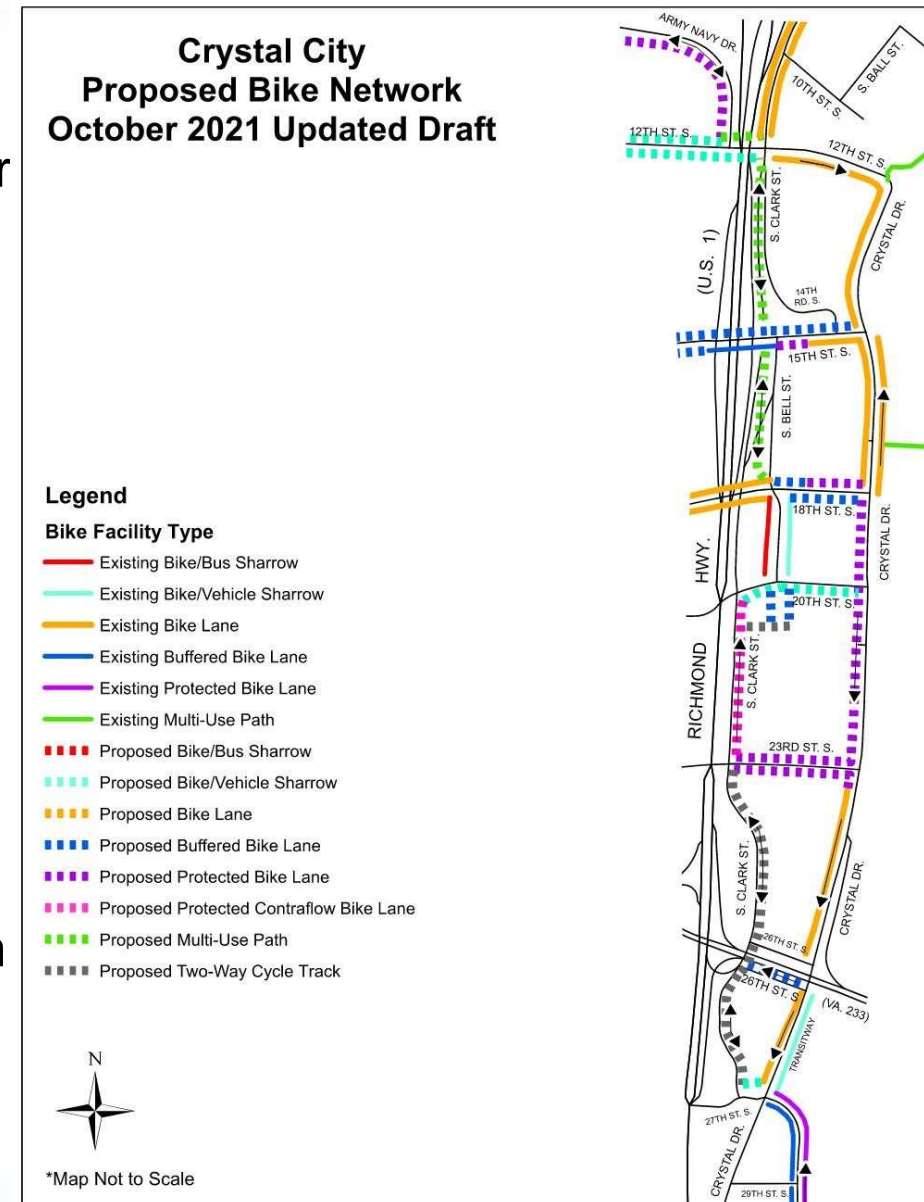
- Transit Strategic Plan, ACCS Strategic Plan

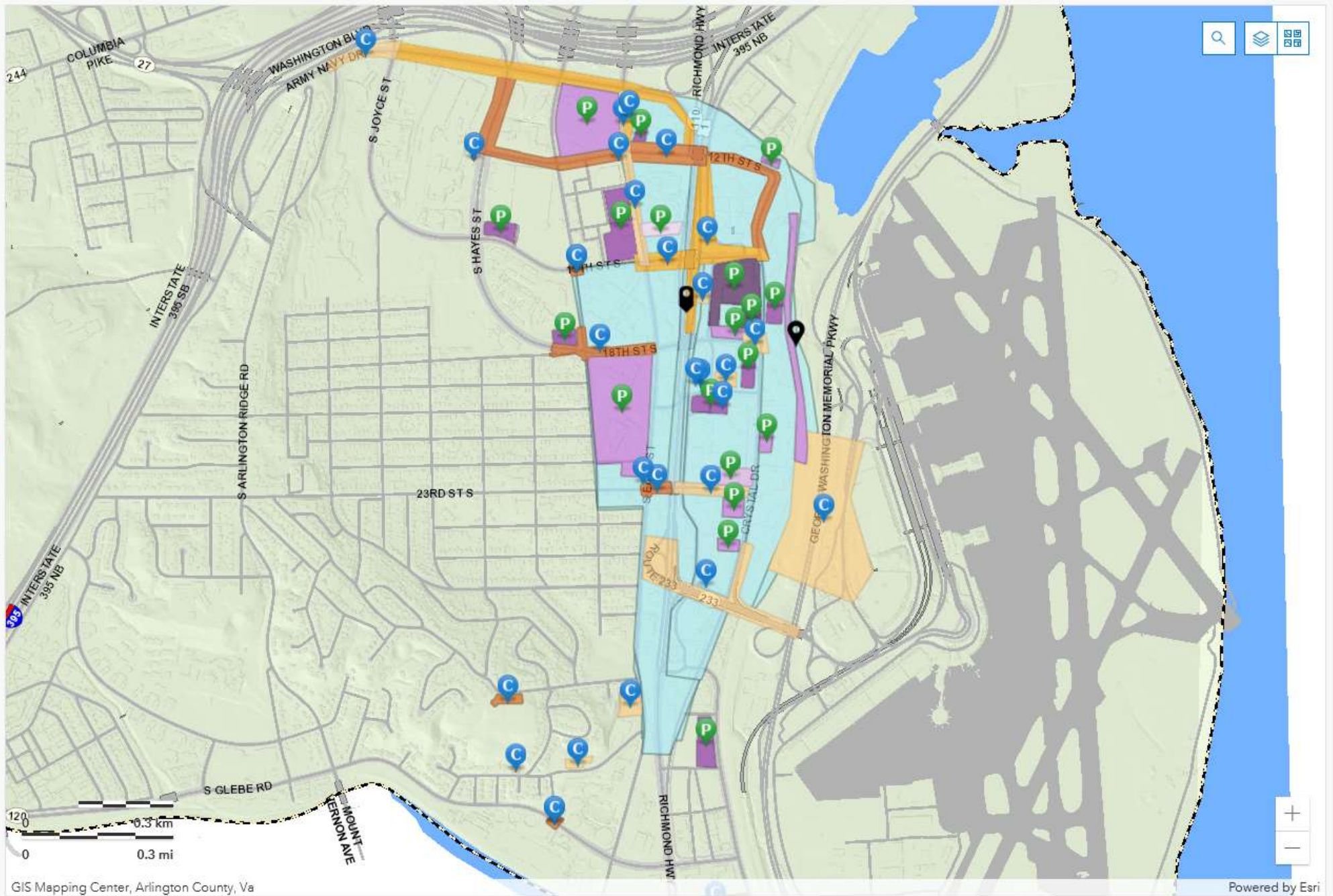
Near-Term Implementation

- Crystal City Bike Network
 - Street-specific recommendations map + high-level implementation
- Private development
 - Construction of multimodal street improvements as part of community benefits packages
- Capital projects
 - Primary mechanism by which the County implements transportation improvements to fulfill long-term plans

Crystal City Bike Network

- Project Location: Crystal City east of Richmond Highway, from Alexandria border extending north to Long Bridge Park
- Project Scope: Investigate and deliver enhanced bicycle facilities by 2024 while:
 - Preserving and potentially enhancing the Crystal City-Potomac Yard Transitway
 - Balancing existing right-of-way to serve all modes of transportation
 - Align with existing transportation plans
 - Coordinate improvements with ongoing development
- Project Status: Developing final recommendations and implementation plan
- Next Public Touchpoint: Release of final recommendations



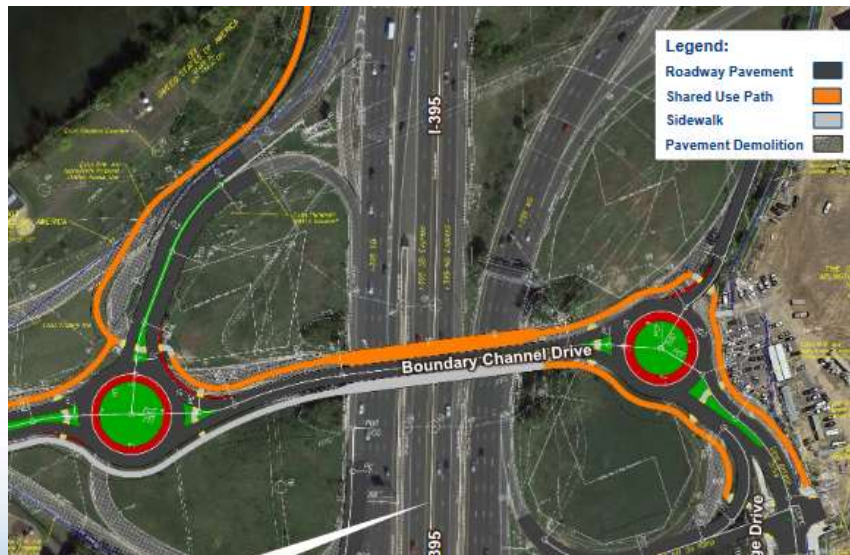


GIS Mapping Center, Arlington County, Va

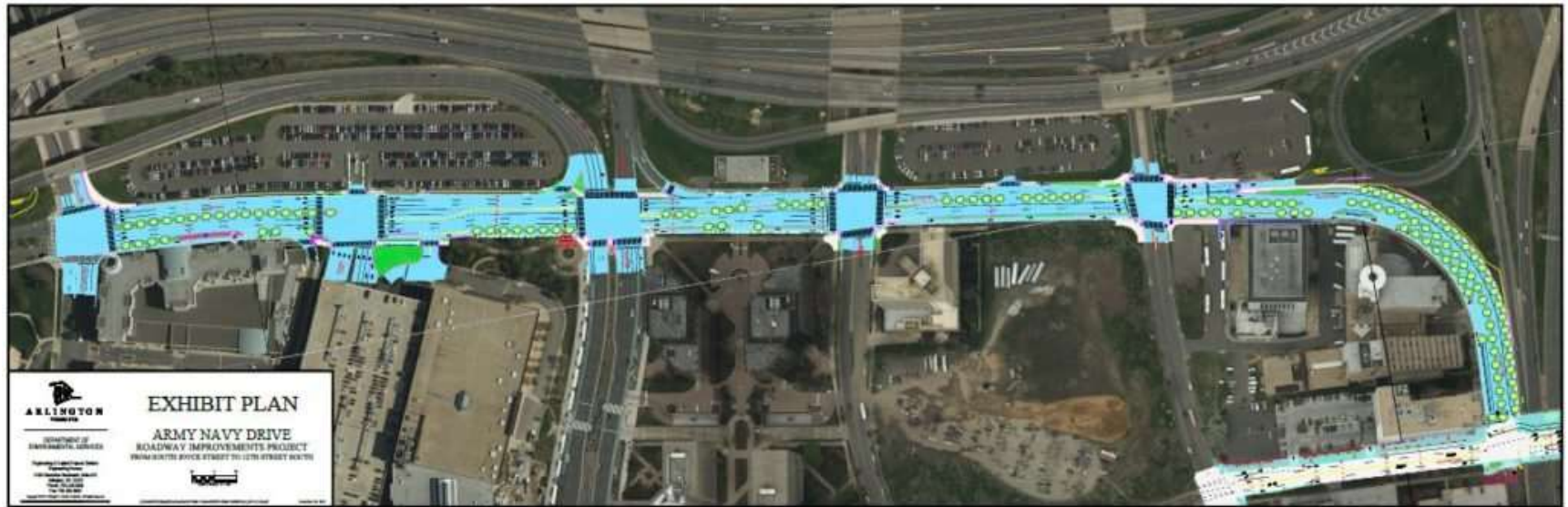
Powered by Esri

Boundary Channel Drive Interchange Improvements

- Project Location: Boundary Channel Drive interchange at I-395
- Project Scope: Reconfigure Boundary Channel Drive interchange to include roundabouts on either side of I-395 and bicycle/pedestrian improvements
- Project Status: Design-builders approaching 90% design
- Cost: \$20.4 million
- Next Public Touchpoint: 90% Design communication, Construction alerts beginning summer 2022

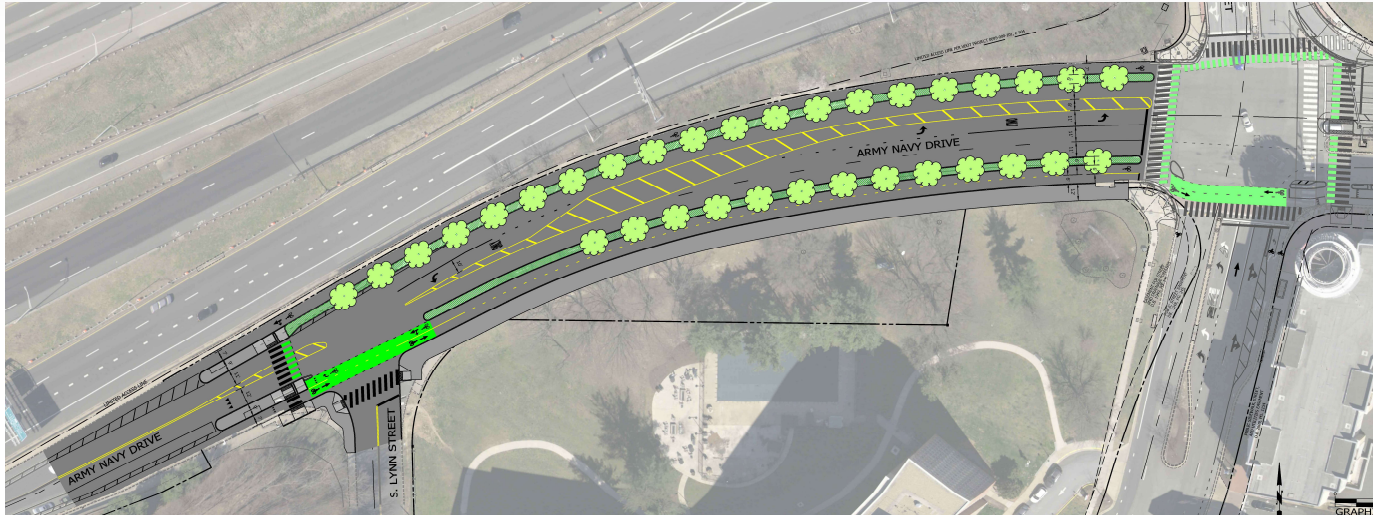


Army Navy Drive Complete Street



- Project Location: Army Navy Drive between S. Joyce St. and 12th St. S.
- Project Goals & Scope:
 - Redesign as a Complete Street with improved safety and travel accommodation for multi-modal users
 - Critical linkage of Crystal City transitway to Pentagon City
- Planning Basis: Crystal City Sector Plan, MTP Bike Element #1-06
- Project Status: Approved to advertise; finalizing easements prior to ITB
- Cost: \$16.1 million
- Next Public Touchpoint: County Board action on construction contract, summer 2022

Army Navy Drive Protected Bike Lane

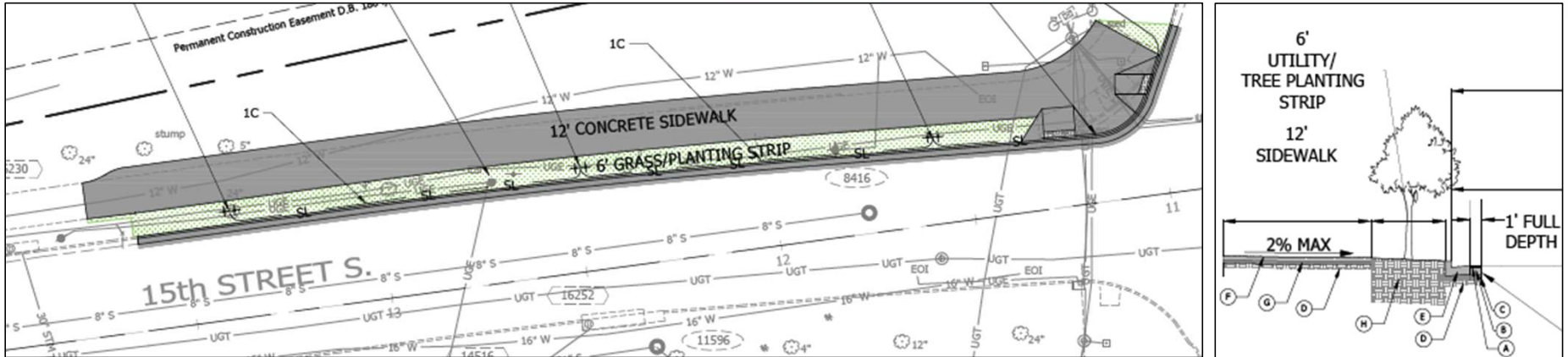


- Project Location: 12th St. S. between S. Lynn St. to S. Joyce St.
- Project Goals & Scope:
 - Dovetails to fill "Missing Link" in Army Navy Complete Streets project
 - Separated, buffered bike lanes, raised planted islands, curb extensions
- Planning Basis: Pentagon City Sector Plan, MTP Bike Element
- Project Status: 30% Design through Spring 2021
- Design Development & Final Design into Winter 2022-23
- Cost: Estimated at \$4 million, locally funded, County-maintained
- Next Public Touchpoint: Communication of final concept in Fall 2022

South Eads Street - Phase 1

- Phase 1 Location: South Eads between Army Navy Drive and 12th St. South
 - Project Scope: Improve sidewalk and add protected bike lane on east side of South Eads Street
 - Planning basis: Master Transportation Plan, Crystal City Sector Plan
 - Project Status: Completing 30% design in Spring 2022
- Phase 2 Location: South Eads from 12th St. South to 15th St. South
 - Project Scope:
 - Upgrade bike lane to include vertical curb protection
 - Reconstruct sidewalk and improve streetscape
 - Planning basis: MTP Bike Element, Crystal City Sector Plan
 - Project Status: 30% design public engagement completed Jan 2022
- Combined cost: \$6.5 million
- Next Public Touchpoint: Communicate updates on concept design summer 2022

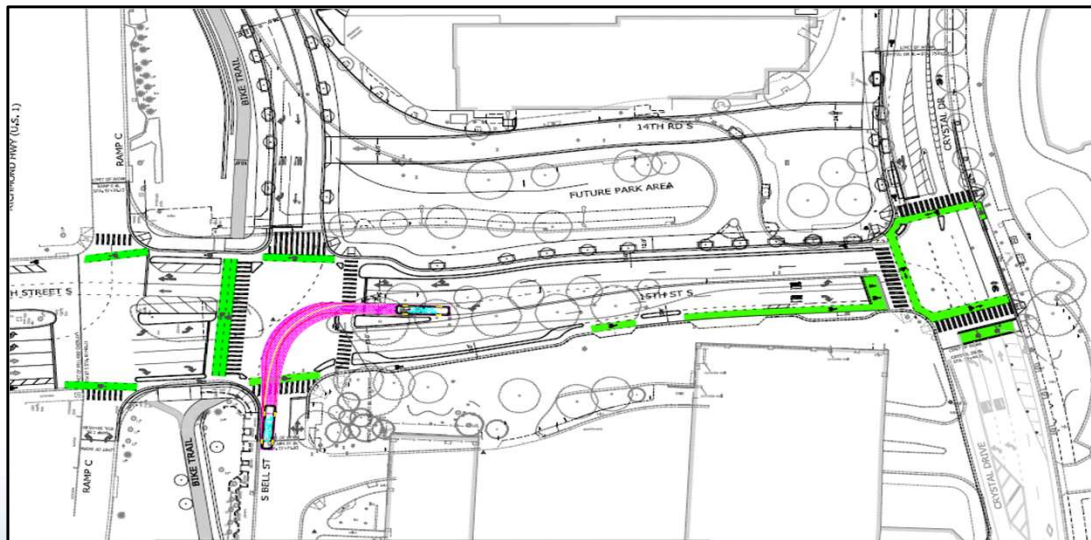
15th Street South Pedestrian Improvements



- Project Location: North side of 15th St. South between South Eads and Route 1
- Project Scope: Sidewalk improvements
 - Extents reduced to correspond with expanded scope of realigned Clark/Bell project
 - Sidewalk section expanded to 12-foot width with 6-foot planting strip
 - Reconstruct north sidewalk and improve streetscape on 15th St S.
- Planning Basis: Crystal City Sector Plan
- Project Status: Construction will begin May 2022, extend through July 2022
- Cost: Scope reduction lowered project cost to \$400k
- Next Public Touchpoint: Construction notifications

15th Street South Improvements

- Project Location: 15th St South between Clark/Bell & Crystal Drive
- Project Scope: Sidewalk improvements
 - Upgrade sharrows to protected bike lanes in both directions on 15th St S
 - Reconstruct Northside sidewalk and improve streetscape on 15th St S
 - Realign 15th St S with Clark/Bell & Crystal Drive
 - Construct a Multi-use trail along west side of Clark/Bell
- Planning Basis: Crystal City Sector Plan
- Project Status: 90% Design – reworking underway
- Cost: \$12 million
- Next Public Touchpoint: Communicate updates on 90% redesign – Spring 2022



Crystal City to DCA Multimodal Connection (CC2DCA)

- Project Location: Precise alignment and facility type to be determined during NEPA concept development
- Project Scope: Provide a multimodal connection between Crystal City and DCA
- Planning basis: Building upon connectivity referenced in the Crystal City Sector Plan
- Project Status: NEPA Phase Alternatives Analysis
- Cost: \$38 million estimate
- Next Public Touchpoint: Public Comment on Recommended Preferred Alternative, Fall 2022



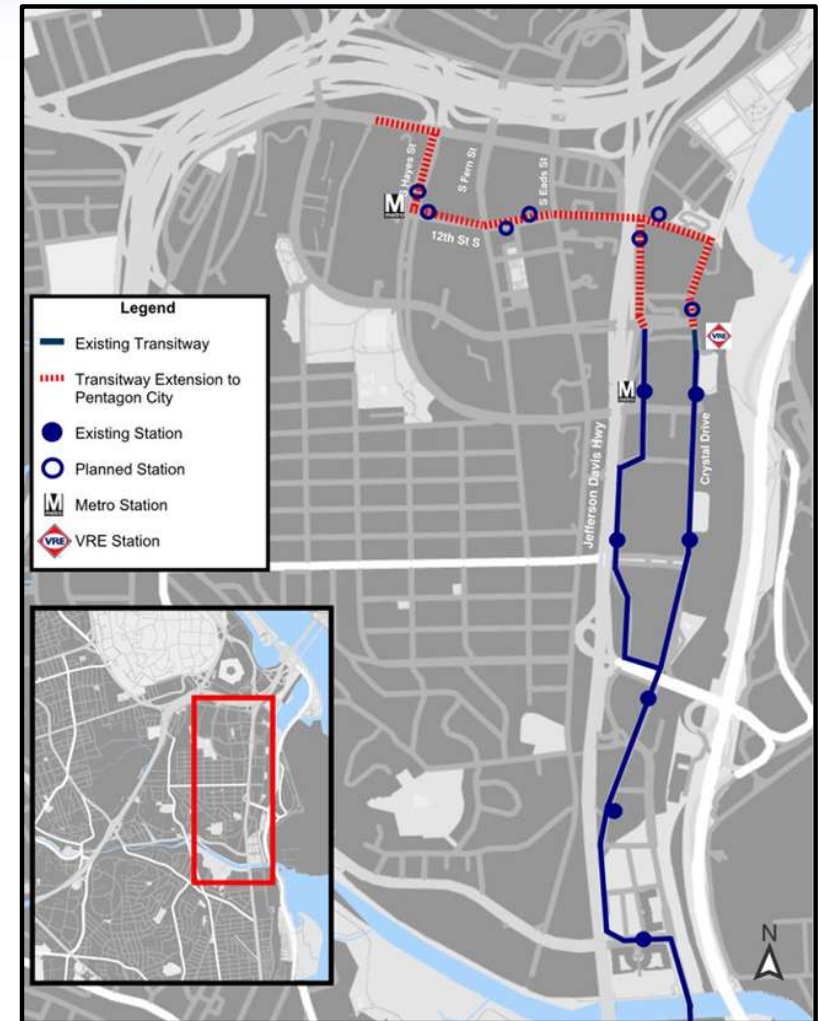
Transitway Extension to Pentagon City

Project Location Crystal Drive/12th St. between 15th St and S. Hayes St.

Project Scope Extension of existing Crystal City Potomac Yard Transitway to Pentagon City provide quality accessible transit with new stations, amenities and public art

Project Challenges Coordination with adjacent development to ensure multimodal network functions during construction

Coordinated Projects 12th Street South between Long Bridge Drive and Eads Street completes cross-section for Transitway

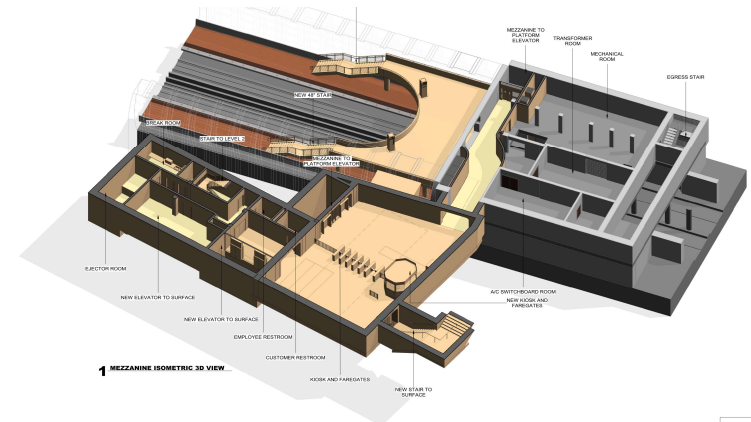
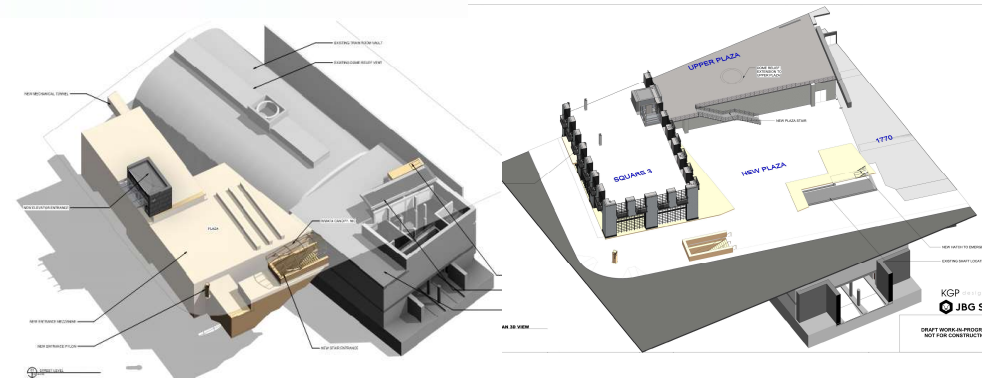


Next Public Touchpoints

- Segment I: Mobilizing construction activities in field, completion summer 2023
- Segment IIA: 60% Design engagement summary – Spring 2022

Crystal City Metro Station Second Entrance

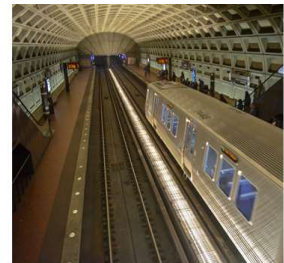
- Project Location: Corner of 18th Street South and Crystal Drive
- Project Scope:
 - New second entrance to Crystal City Metro Station with stairs and elevators
 - New mezzanine level with fare gates and fare vending machines
- Planning basis: Crystal City Sector Plan, Crystal City Station Access and Second Entrance Study, others.
- Project Status:
 - Negotiations on Design/Build Agreement with PPEA partner ongoing
 - Technical coordination with WMATA on 30% Design
 - Analyzing opportunities for construction cost efficiencies
- Cost: approximately \$90 million
- Next Public Touchpoint:
 - 30% Concept Design Public Meeting – Fall 2022



Public Engagement
Pop-up Event



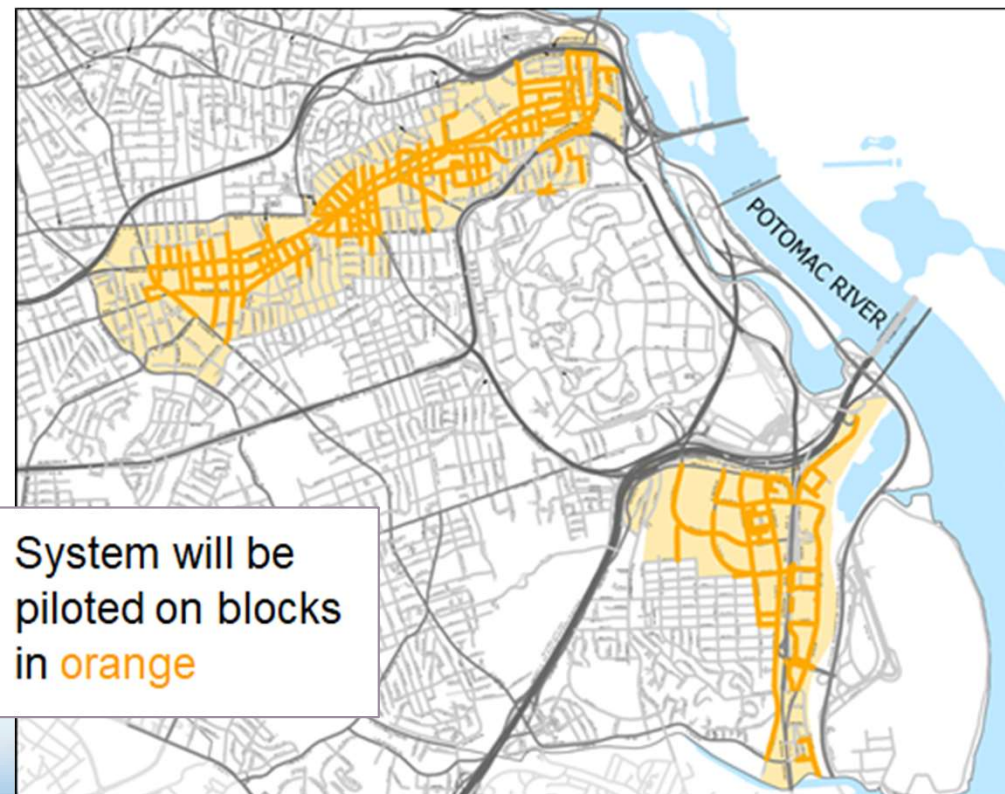
New Entrance Location –
18th Street South & Crystal Drive



Crystal City Metrorail Station

Performance Parking Pilot

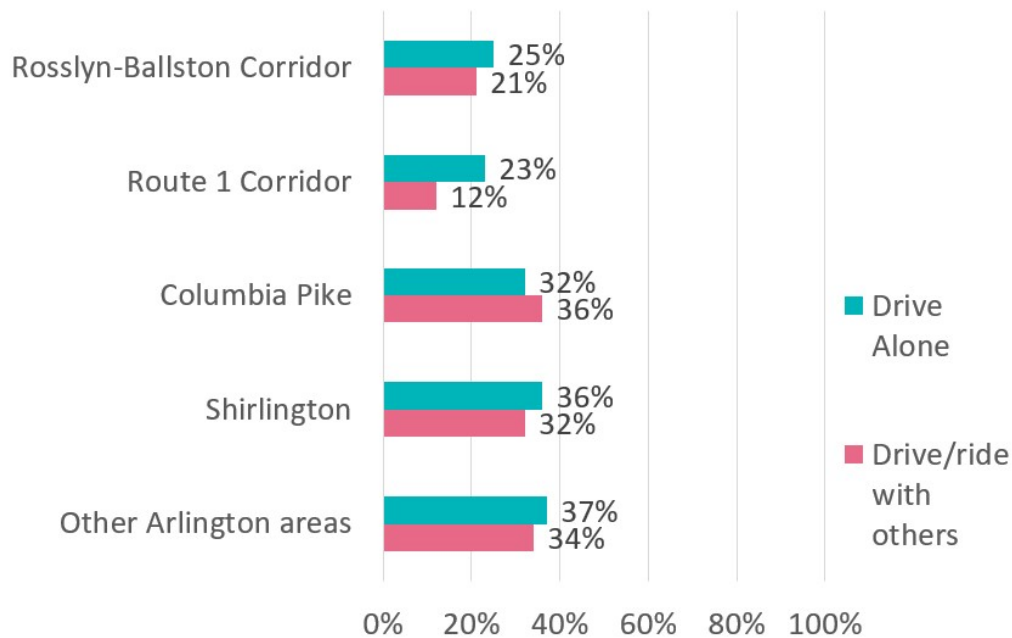
- Project Location: Various locations (map)
- Project Goal:
 - Find out if varying meter rates with parking demand is right for Arlington
 - Possible Benefits:
 - Parking easier to find on high-demand blocks
 - More people choose to park on low-demand blocks and save money
 - Less time spent looking for parking
 - Less parking frustration
 - Less double parking
- Project Status:
 - Grant accepted by County Board
 - Procurement anticipated Summer 2022
- Cost: \$5.4 million



Recent trends in travel

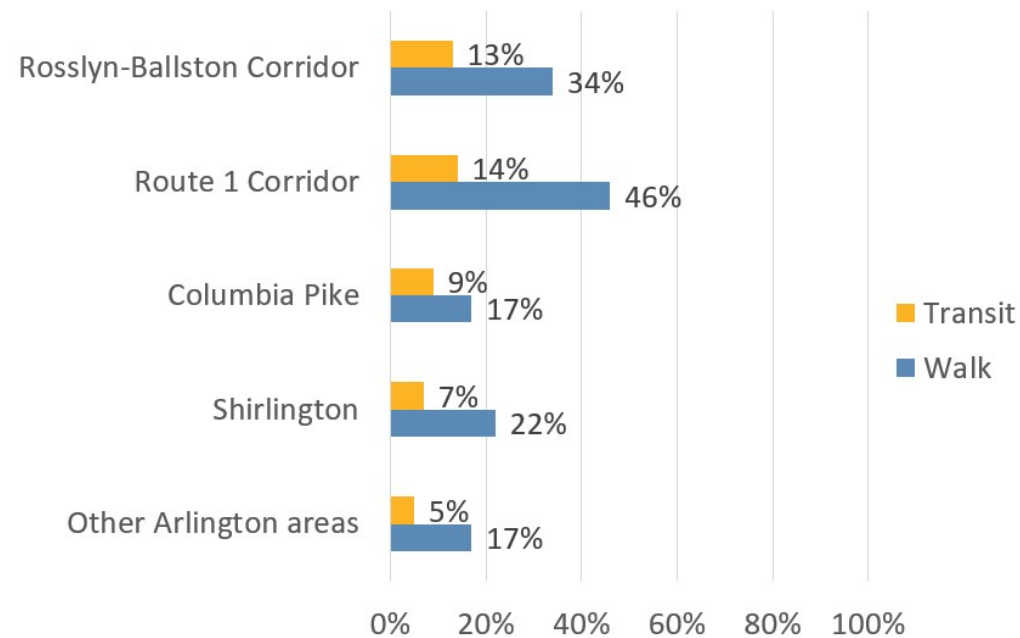
Drive Alone and Drive/Ride with Others Trips to Arlington Planning Areas

Share (%) of trips to Arlington that are drive alone trips and Drive/Ride with Others trips, by Arlington planning area of destination



Transit and Walk Trips to Arlington Planning Areas

Share (%) of trips to Arlington that are transit trips and walk trips, by Arlington planning area of destination



Source: Arlington County Oversample and Special Analysis of the 2017/2018 MWCOG Regional Travel Survey

Next Steps in Crystal City

- Ongoing community engagement on design of active County projects, communication of construction updates
- Coordination on all capital project efforts
 - County street improvements
 - County transit improvements
 - County paving/streetlight improvements
 - County parks improvements
 - Commonwealth of Virginia initiatives (Route 1, Atlantic Gateway)
 - Virginia Railway Express station project
 - Private development
 - Utility improvements/maintenance

Questions?

Thank you!

Sarah Crawford

Assistant Director of Transportation
scrawford@arlingtonva.us
703-228-3397

Allison Bullock

Transportation Planning Manager
abullock1@arlingtonva.us
703-228-3295