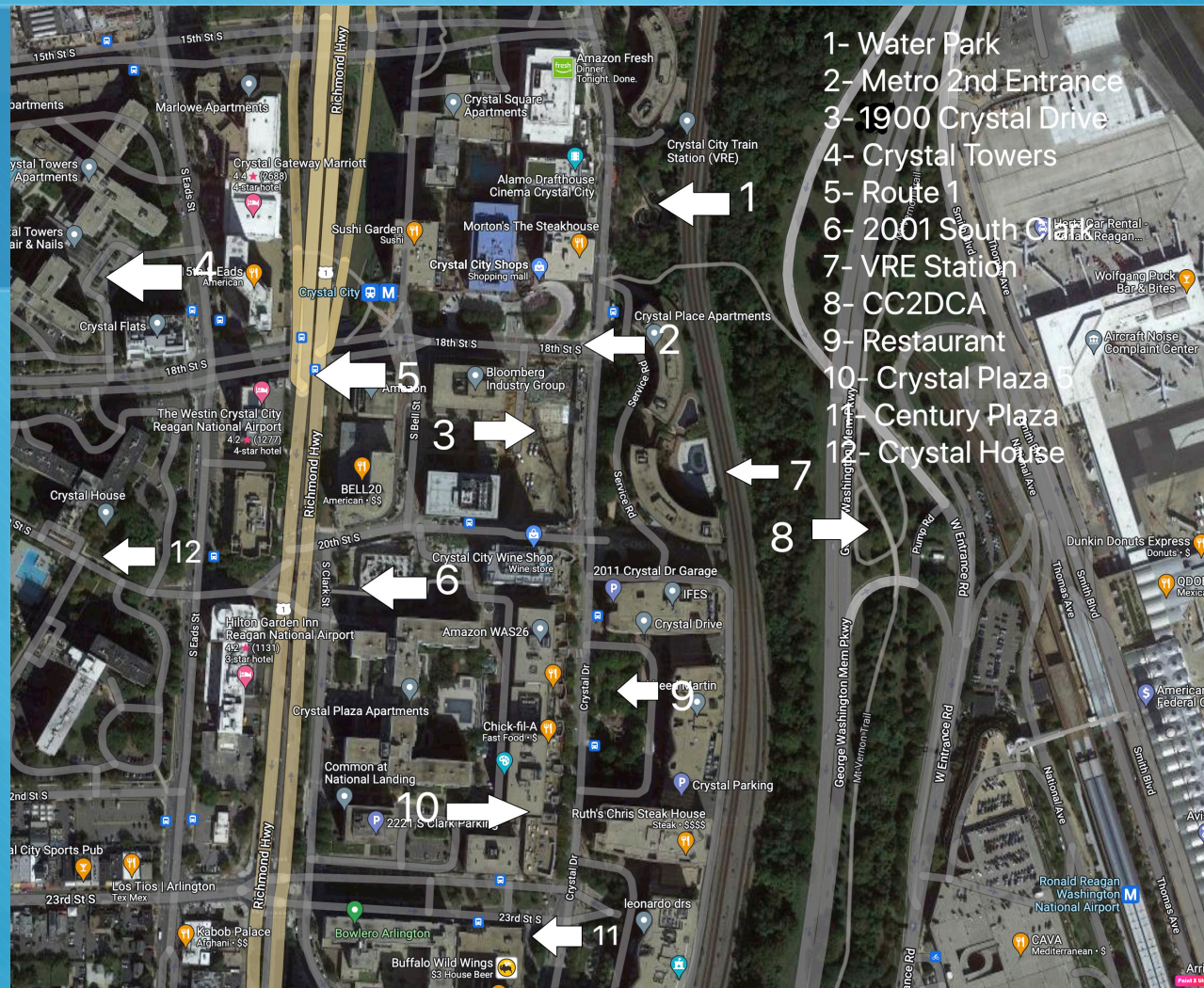


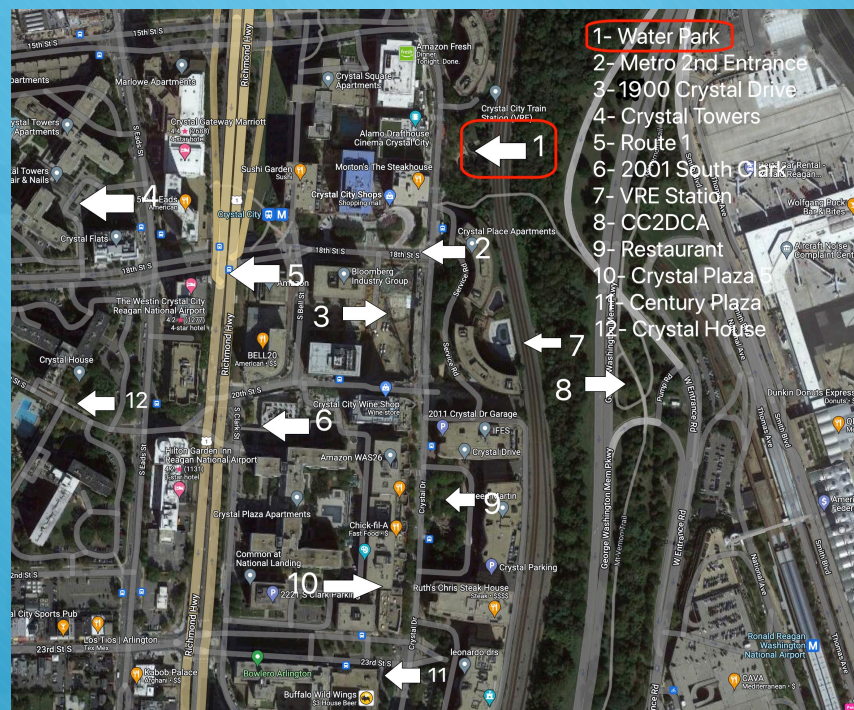


Projects South of 15th Street



- 1- Water Park
- 2- Metro 2nd Entrance
- 3- 1900 Crystal Drive
- 4- Crystal Towers
- 5- Route 1
- 6- 2001 South Crystal Drive
- 7- VRE Station
- 8- CC2DCA
- 9- Restaurant
- 10- Crystal Plaza
- 11- Century Plaza
- 12- Crystal House

1- Water Park

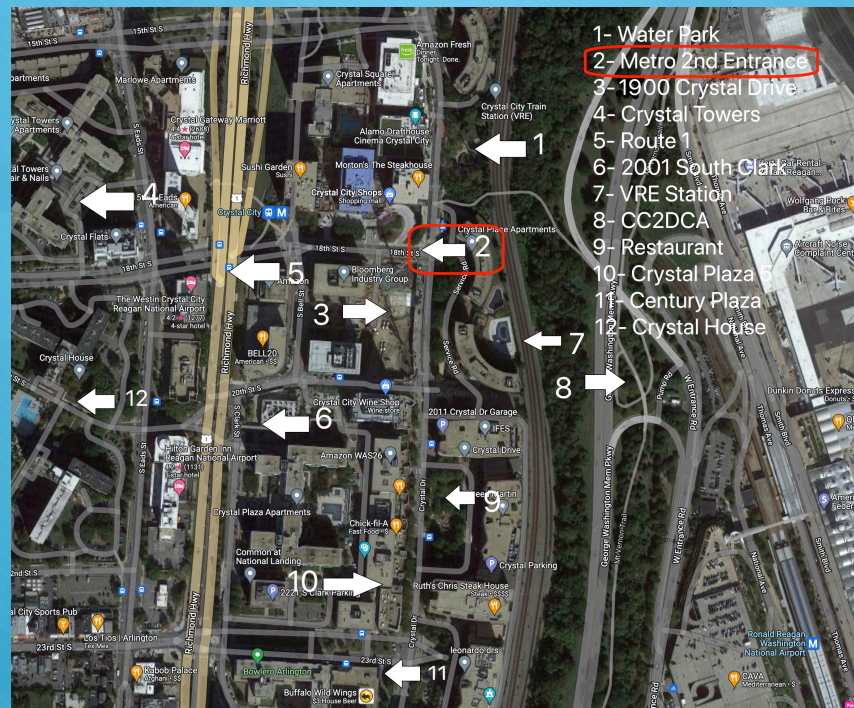


Water Park Projection





2- 2nd Metro Entrance



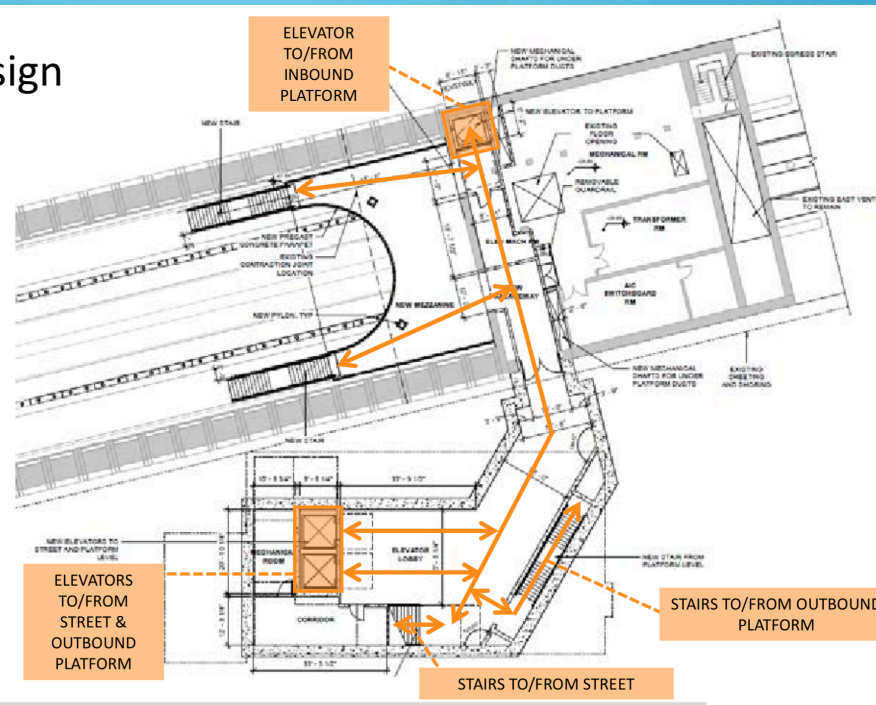
Internal Paths to Trains

At-Grade Entrance Design

Mezzanine

- Two stairs to/from outbound platform
- Two elevators to/from street level and outbound platform
- One staircase to/from inbound platform
- One elevator to/from inbound platform
- One staircase to/from street level

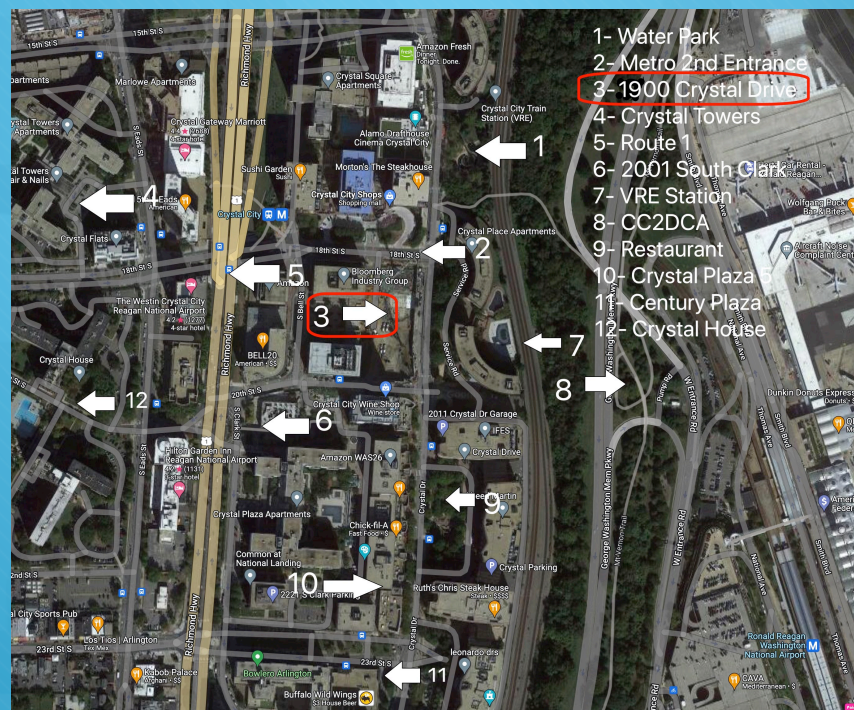
*The design process is ongoing, and the final design may differ from this plan view of the current 30% design.



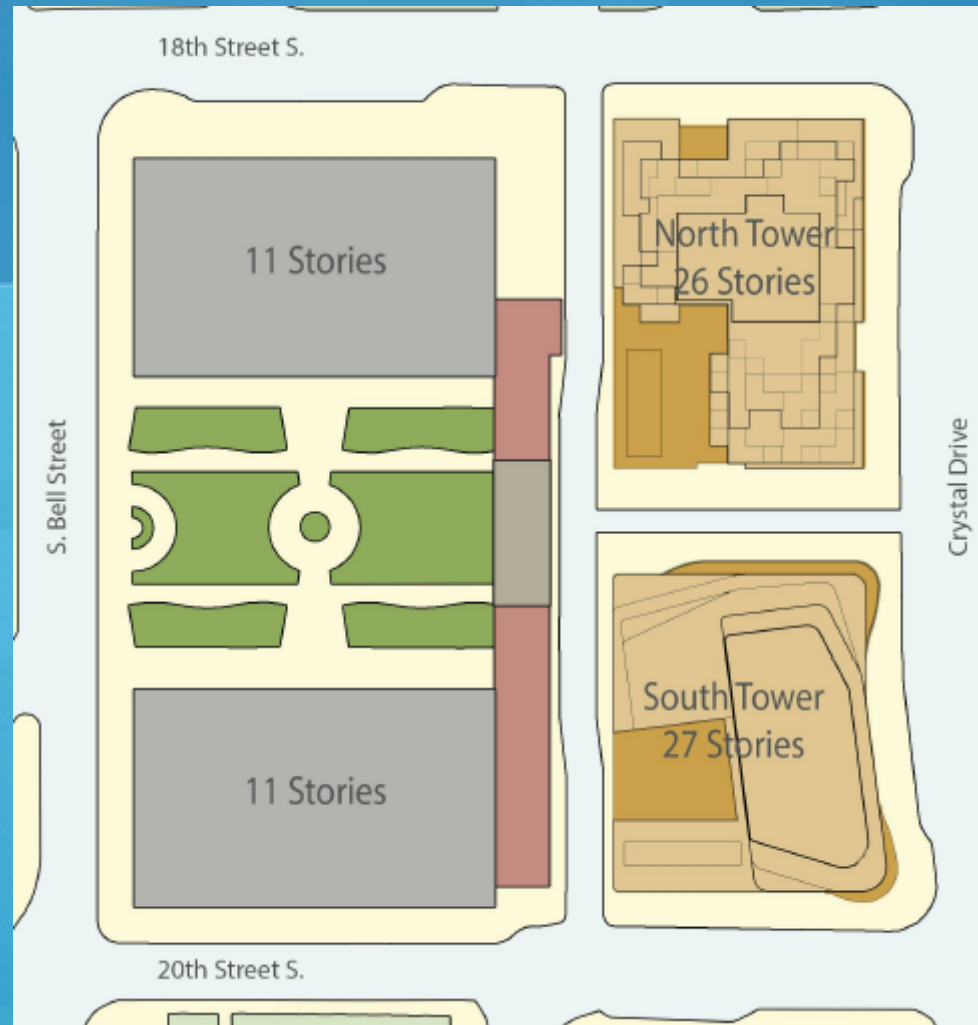
Looking from the Water Park



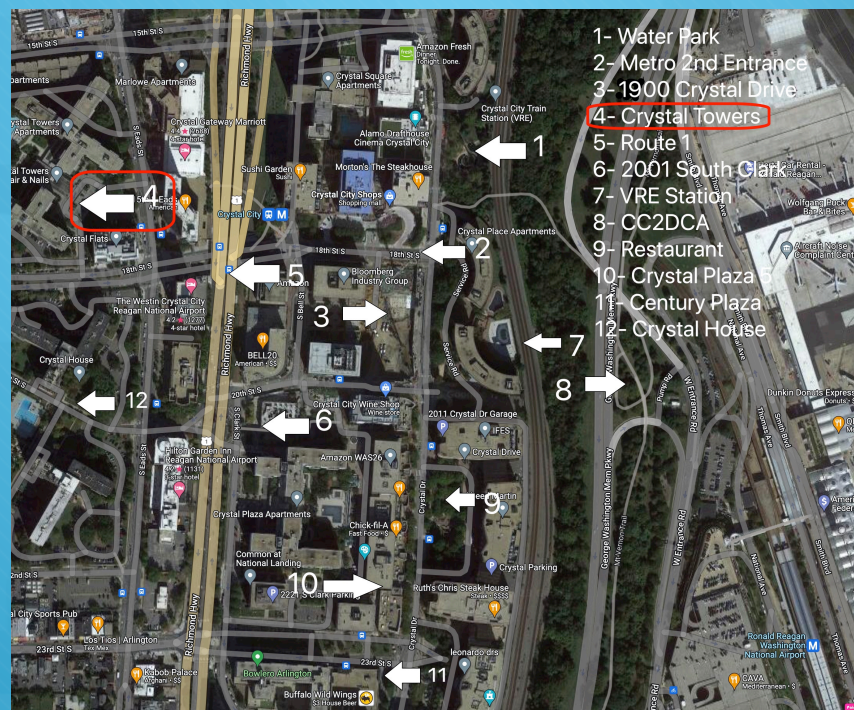
3- 1900 Crystal Drive







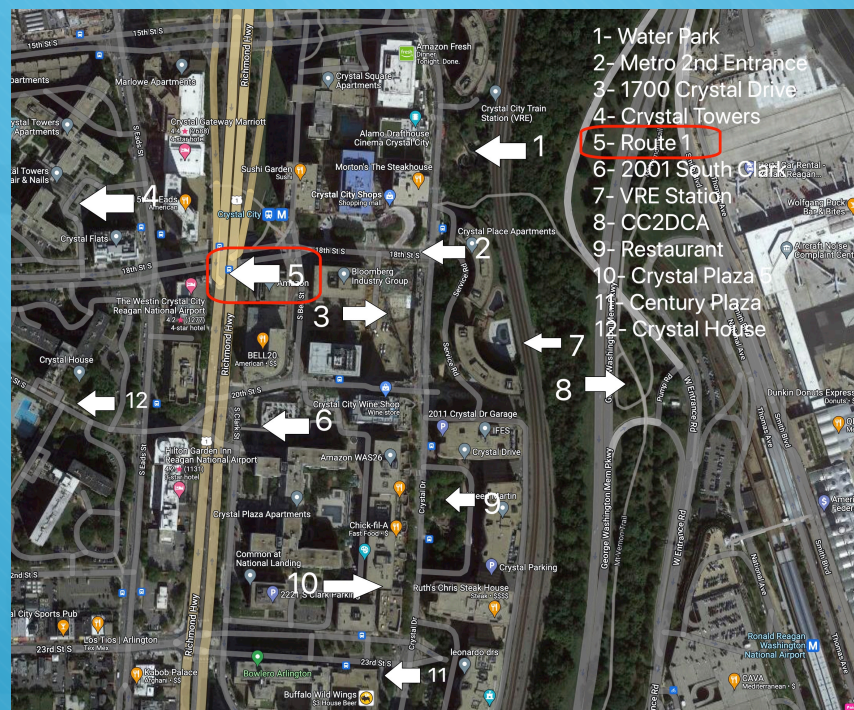
4- Crystal Tower



Development Proposal



5- Route 1

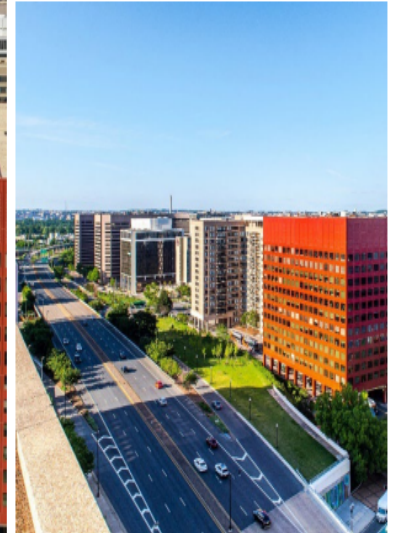
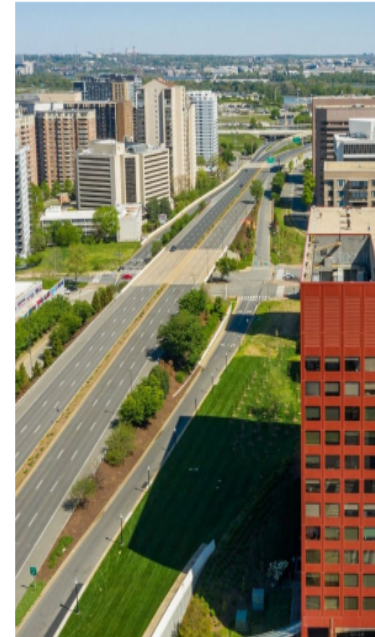




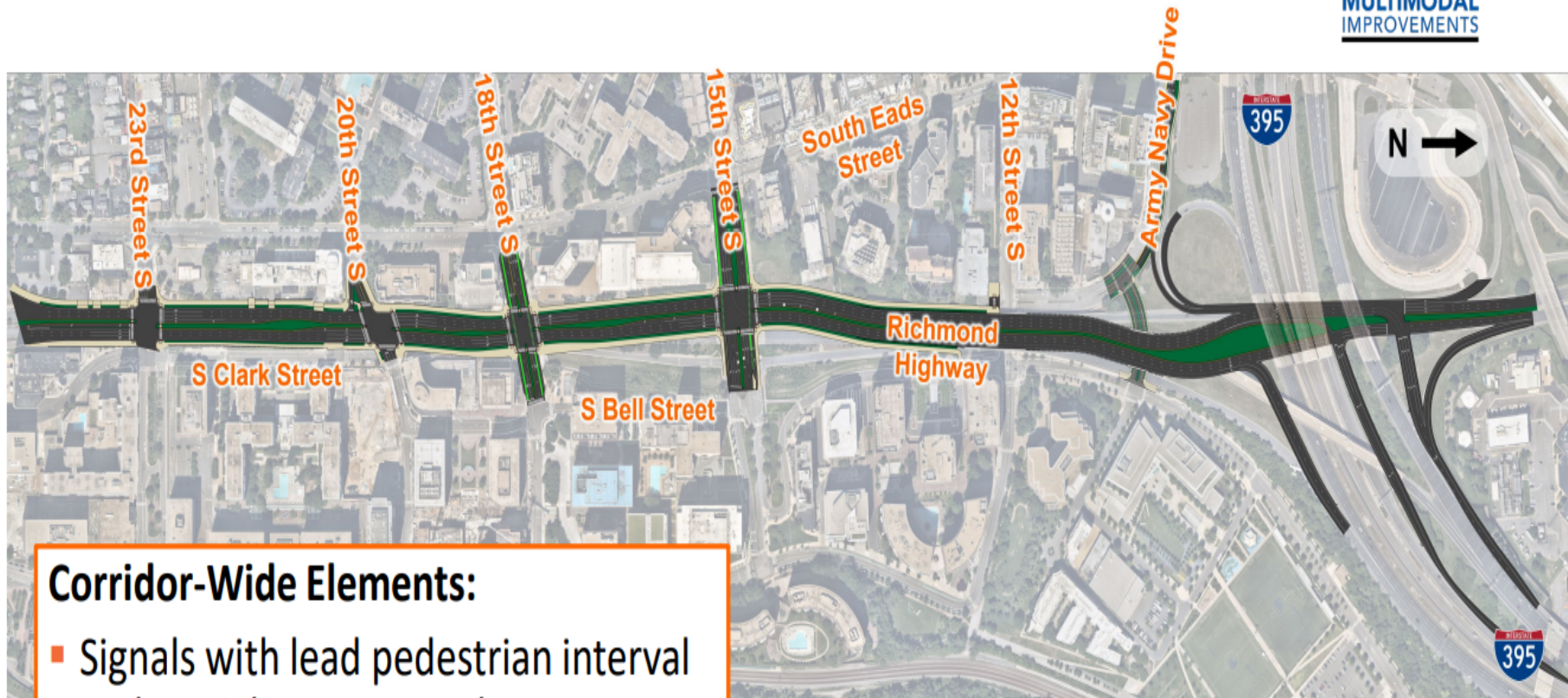
Overview



- Crystal City and Pentagon City:
 - Evolving from auto-centric developments to higher-density, urban places
 - People travel by a variety of modes
 - Mode choices are growing
- Agreement between the Commonwealth of Virginia and Amazon:
 - Implement transportation project for Route 1 in National Landing
 - “improve safety, accessibility, and the pedestrian experience”
- Feasibility study:
 - Aims to provide sufficient information to make best decision on a future project on Route 1
 - Examines transportation needs with the coming of Amazon and other related development



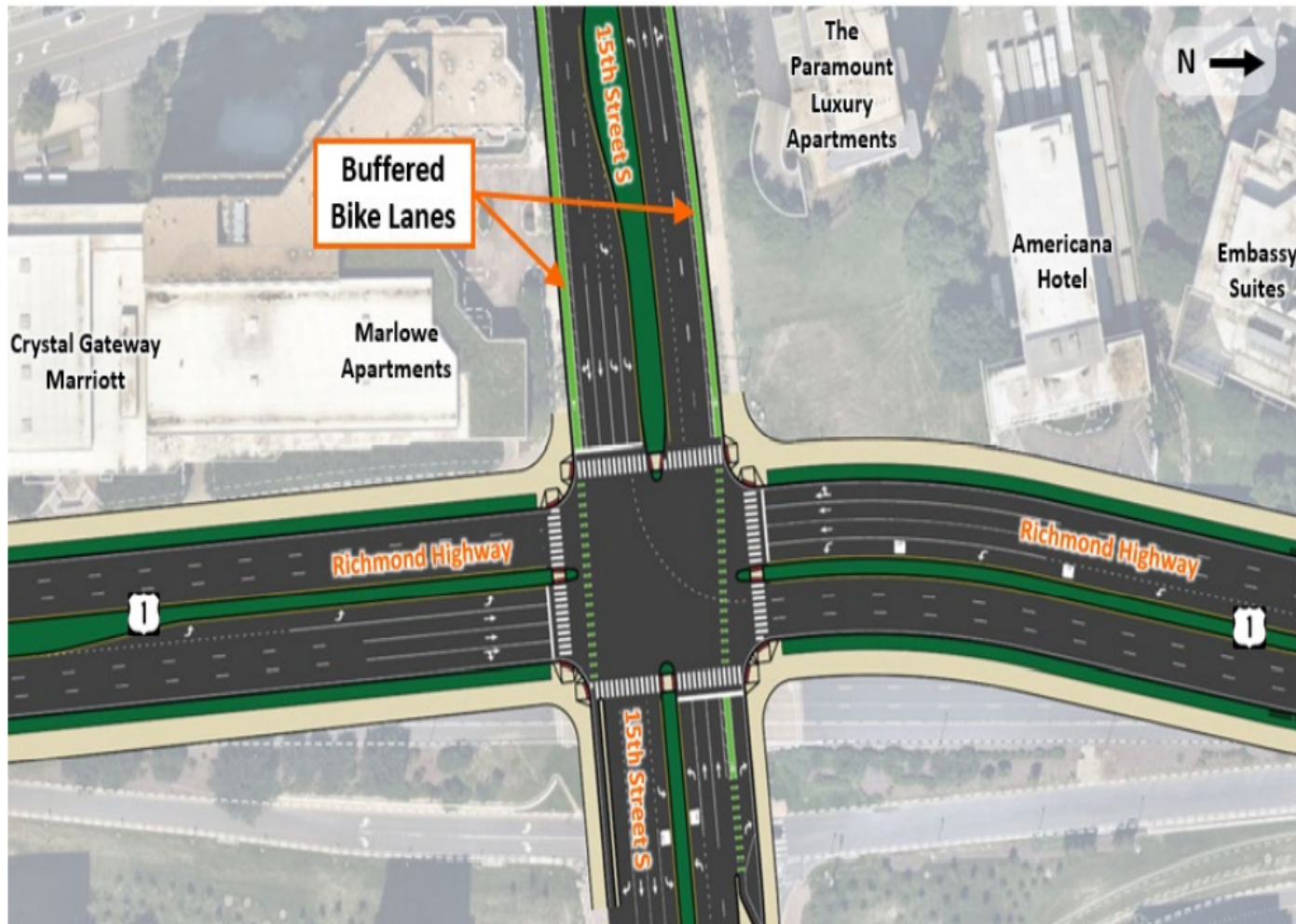
Route 1 Study Corridor – Conceptual Design



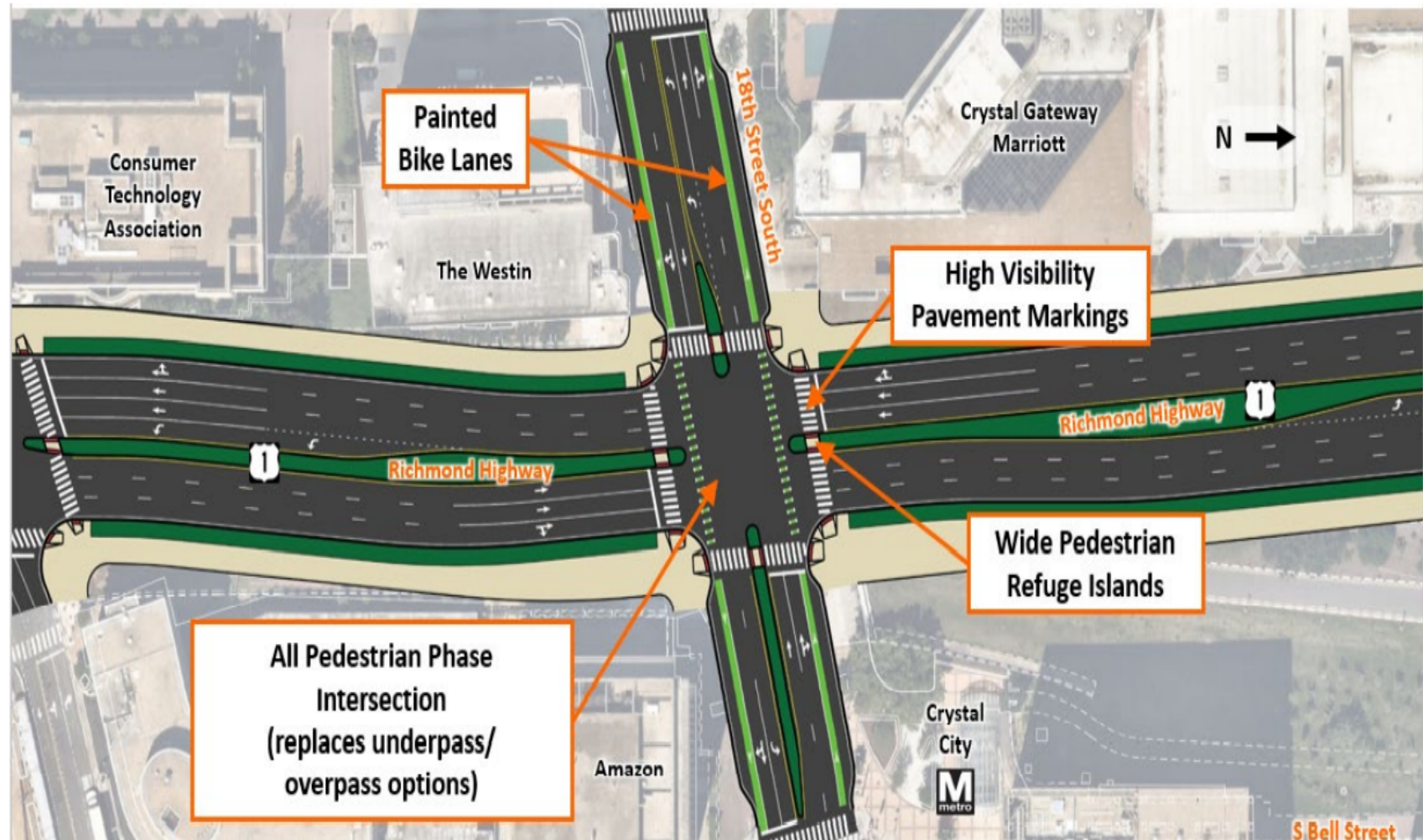
Corridor-Wide Elements:

- Signals with lead pedestrian interval and no right turn on red
- Street/sidewalk lighting
- Median and roadside landscape/streetscape

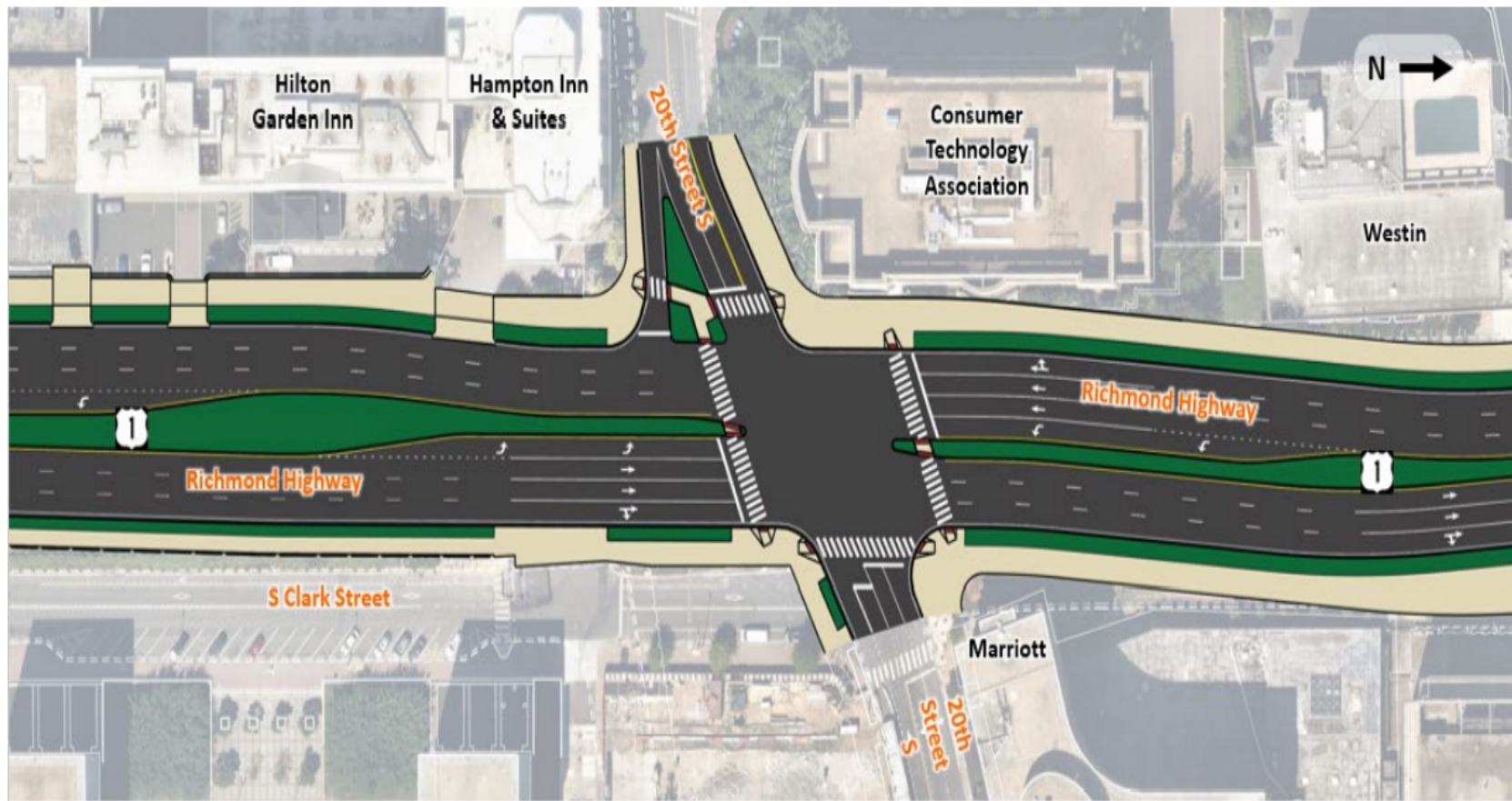
Route 1/15th Street S Intersection



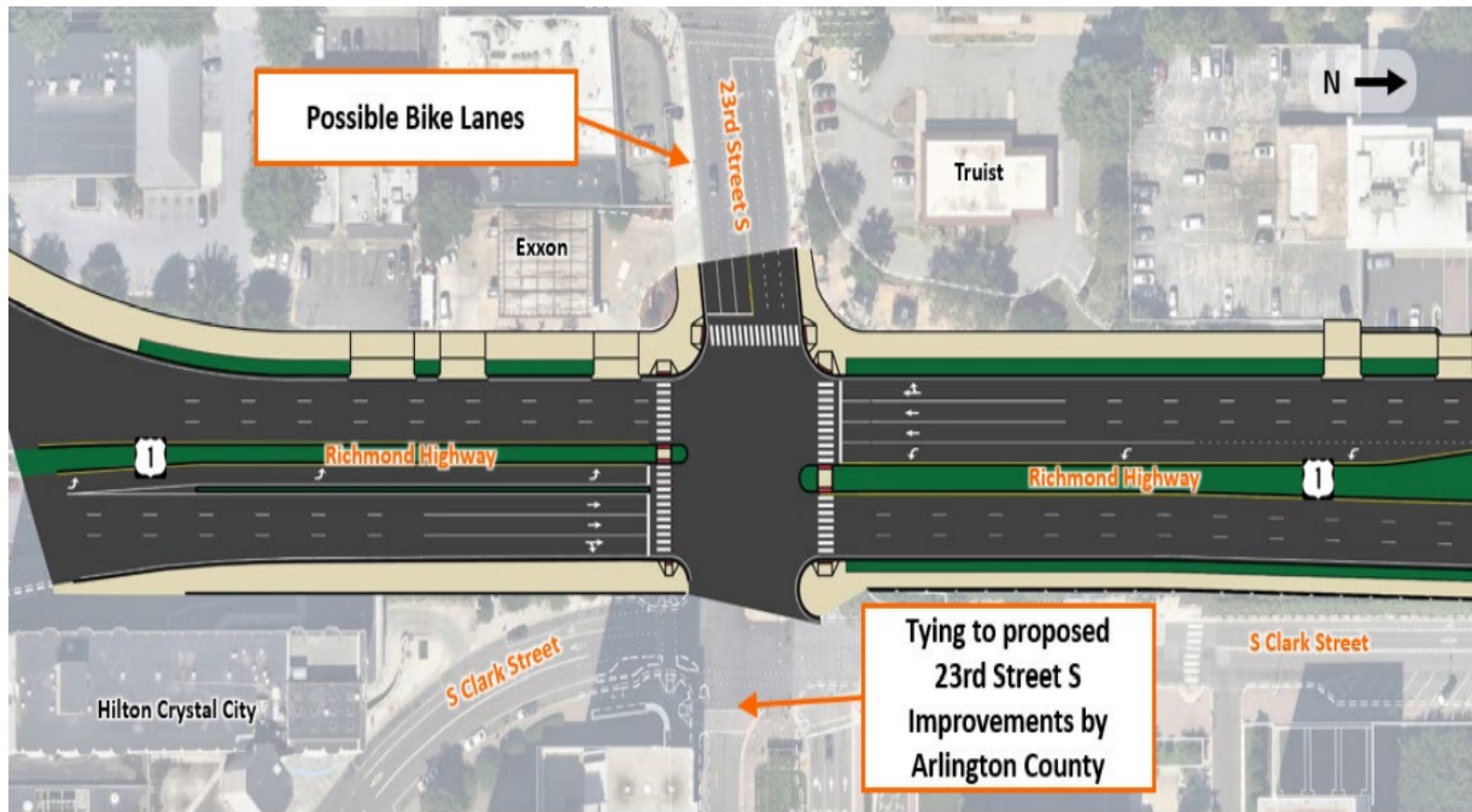
Route 1/18th Street S Intersection (At Grade)



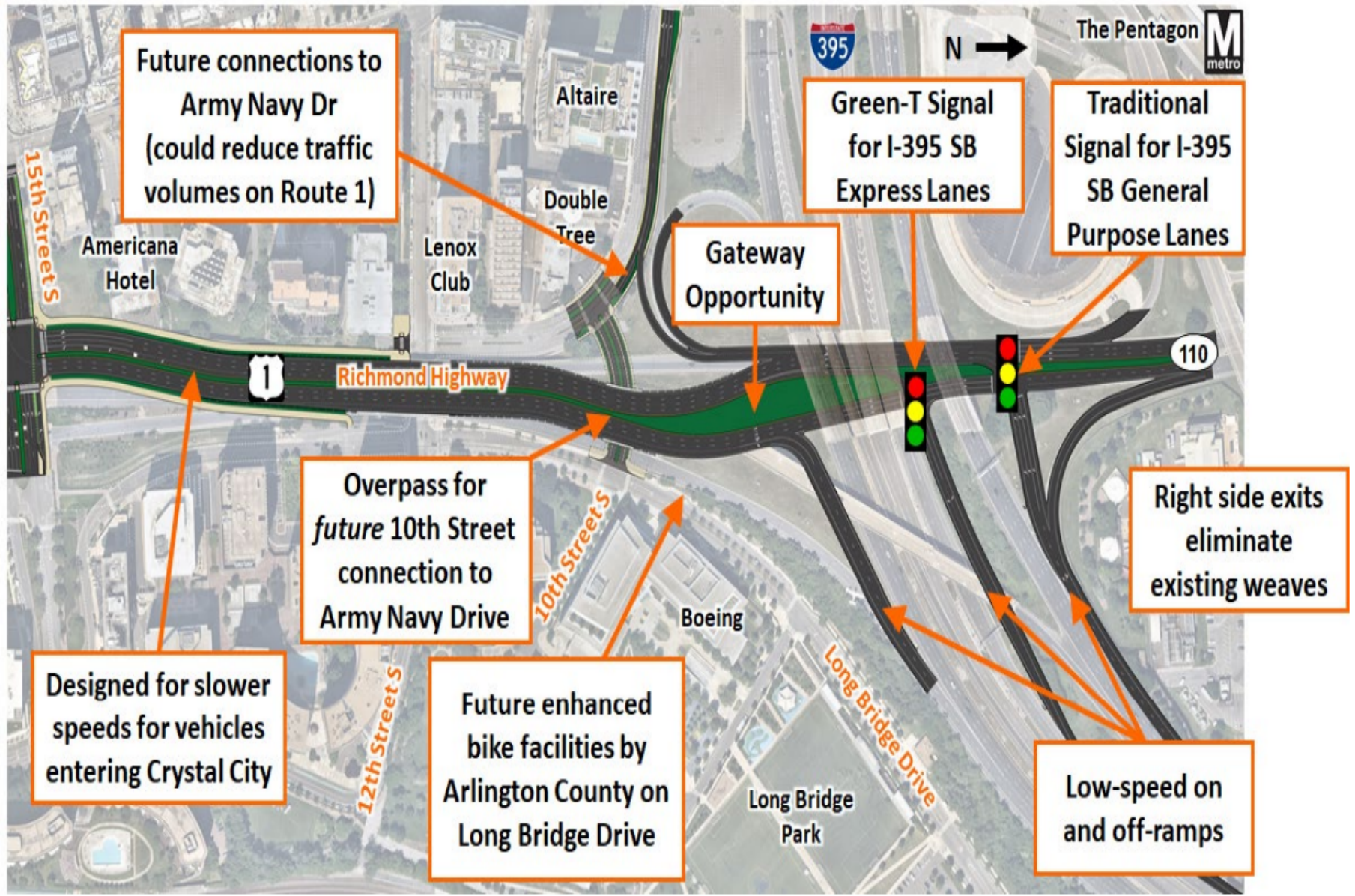
Route 1/20th Street S Intersection



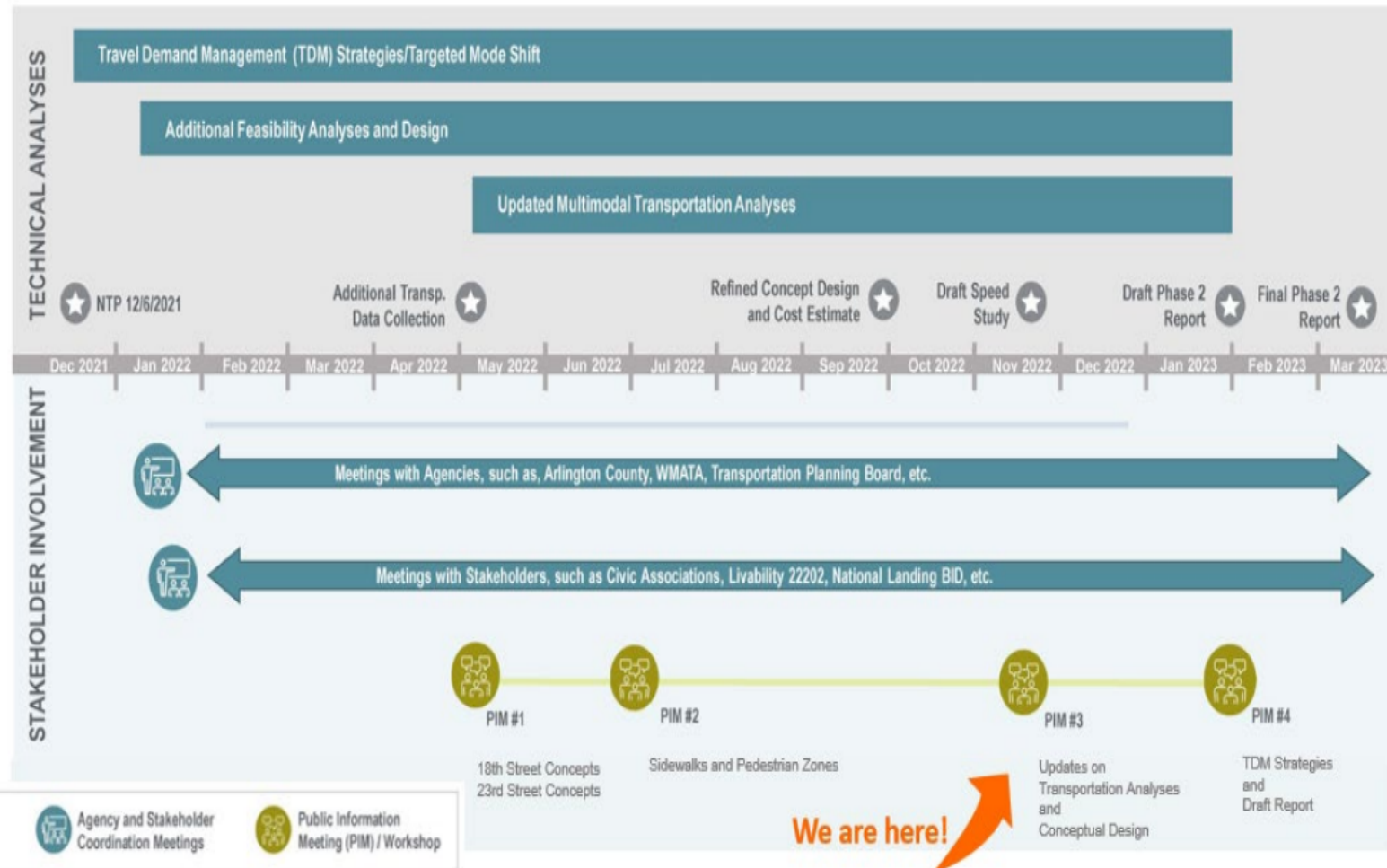
Route 1/23rd Street S Intersection



I-395/Route 1/Route 110 Interchange Concept



Phase 2 Schedule and Work Plan

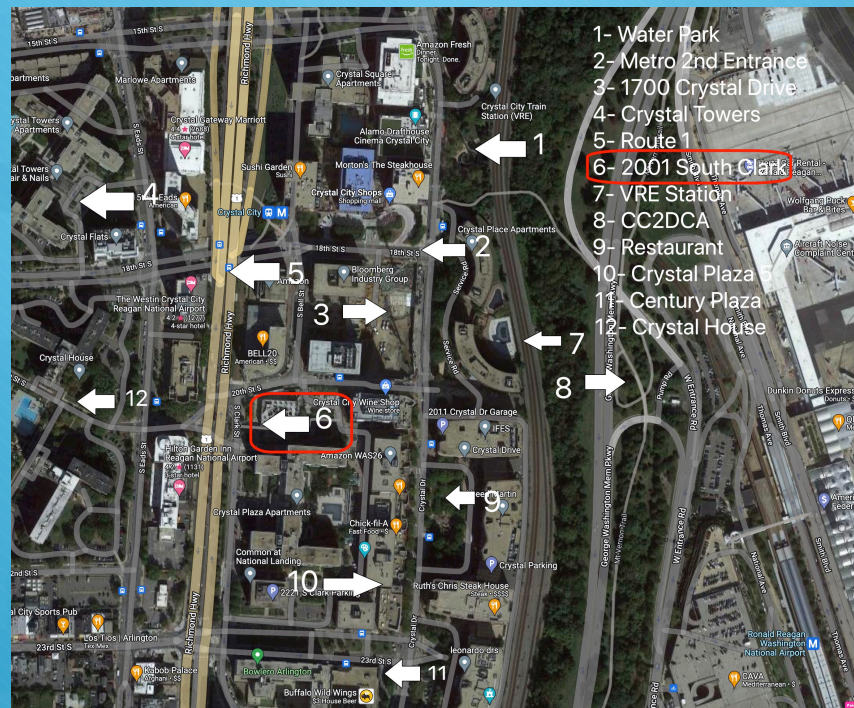


Next Steps



- Conduct additional multimodal transportation analyses
 - Future year build analysis
 - Targeted auto trips that will need to be reduced with travel demand management (TDM) strategies to **keep future traffic volumes at current levels**
- Develop/refine TDM strategies
- Finalize design concepts with streetscape elements
- Develop draft report
- Hold PIM #4 in early 2023

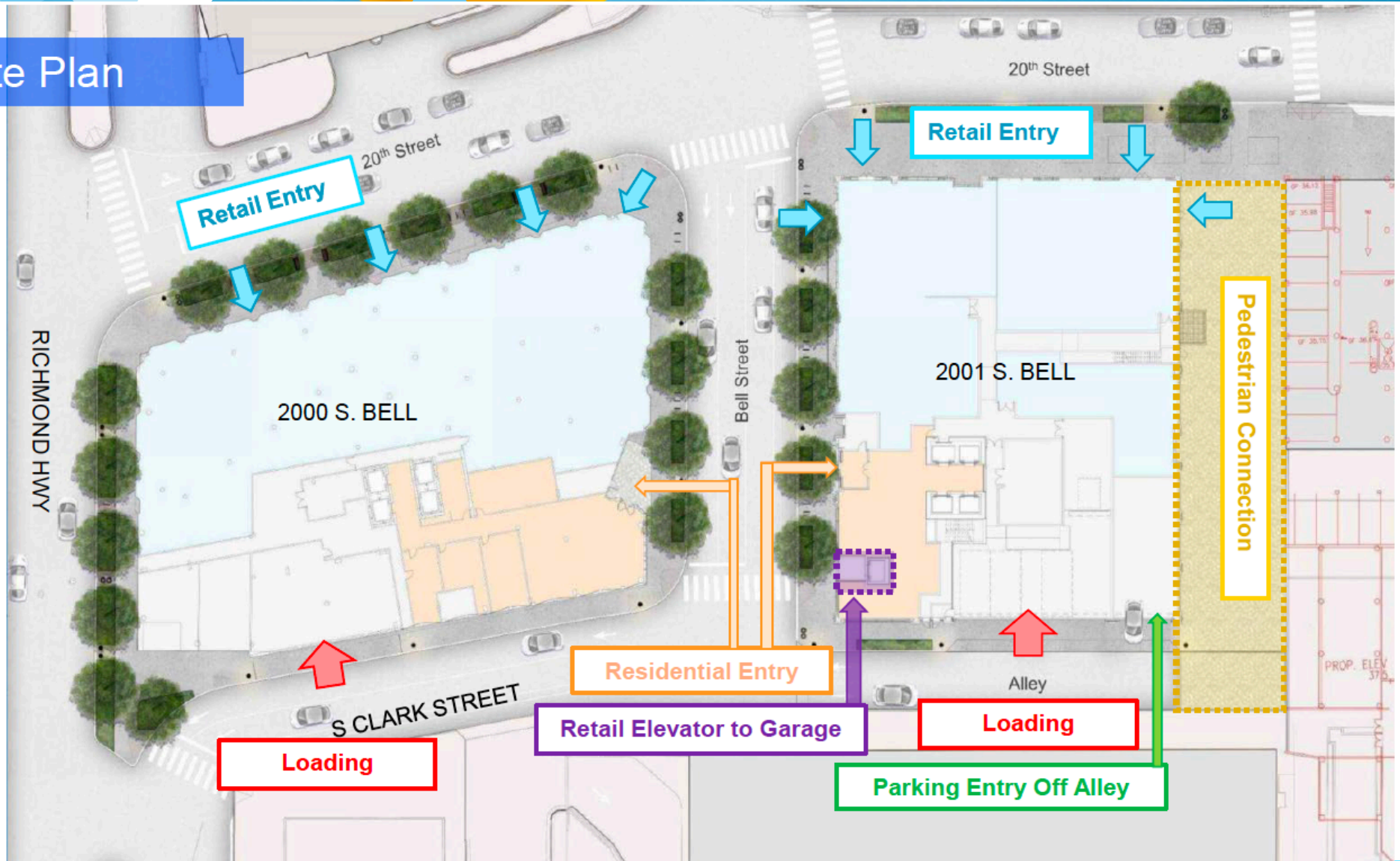
6-2001 South Clark-Plaza1



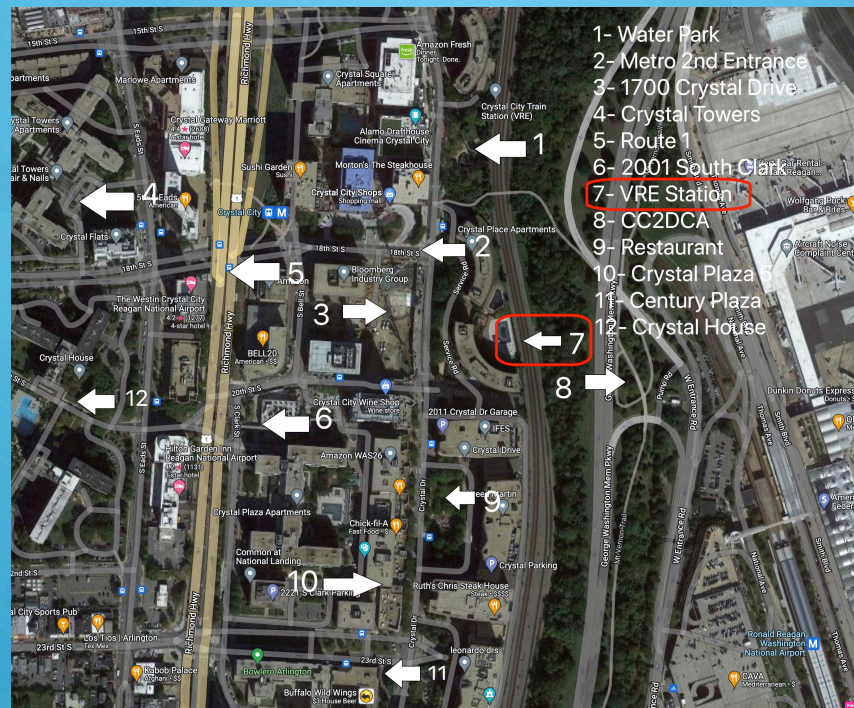
Full Site: Aerial View



Site Plan



7- VRE Station



VRE Station Improvement

Project

- The project developed started in 2016, with the goal of creating additional connectivity between a second Crystal City metro entrance, the VRE station and Amtrak.
- It is partially funded by Northern Virginia Transportation Authority.
- It will also connect to the pedestrian bridge to DCA.

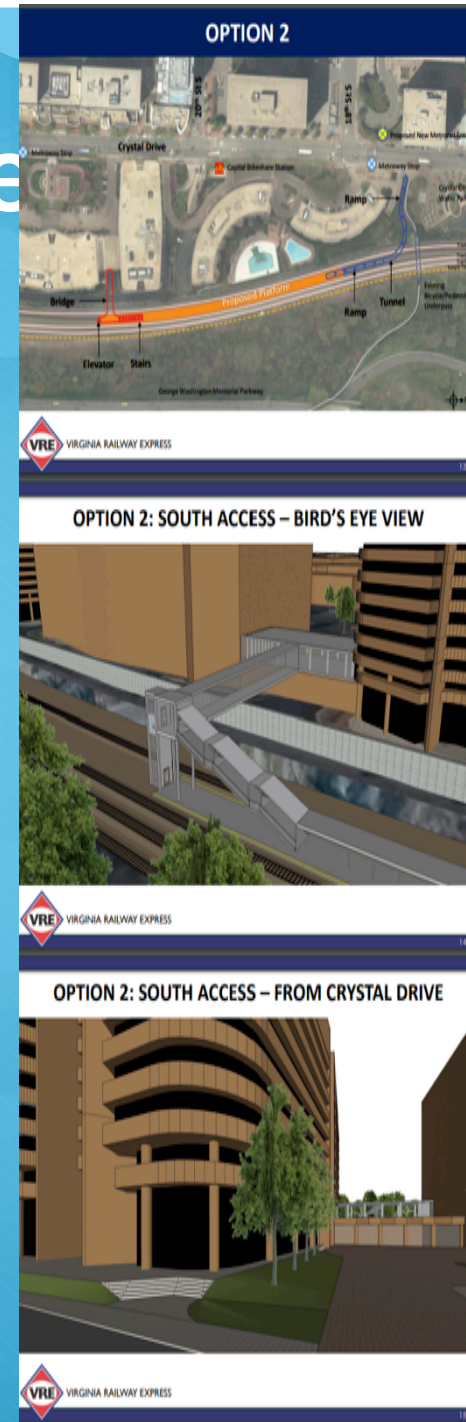
Construction

- August 2023 - October 2025 (anticipated)

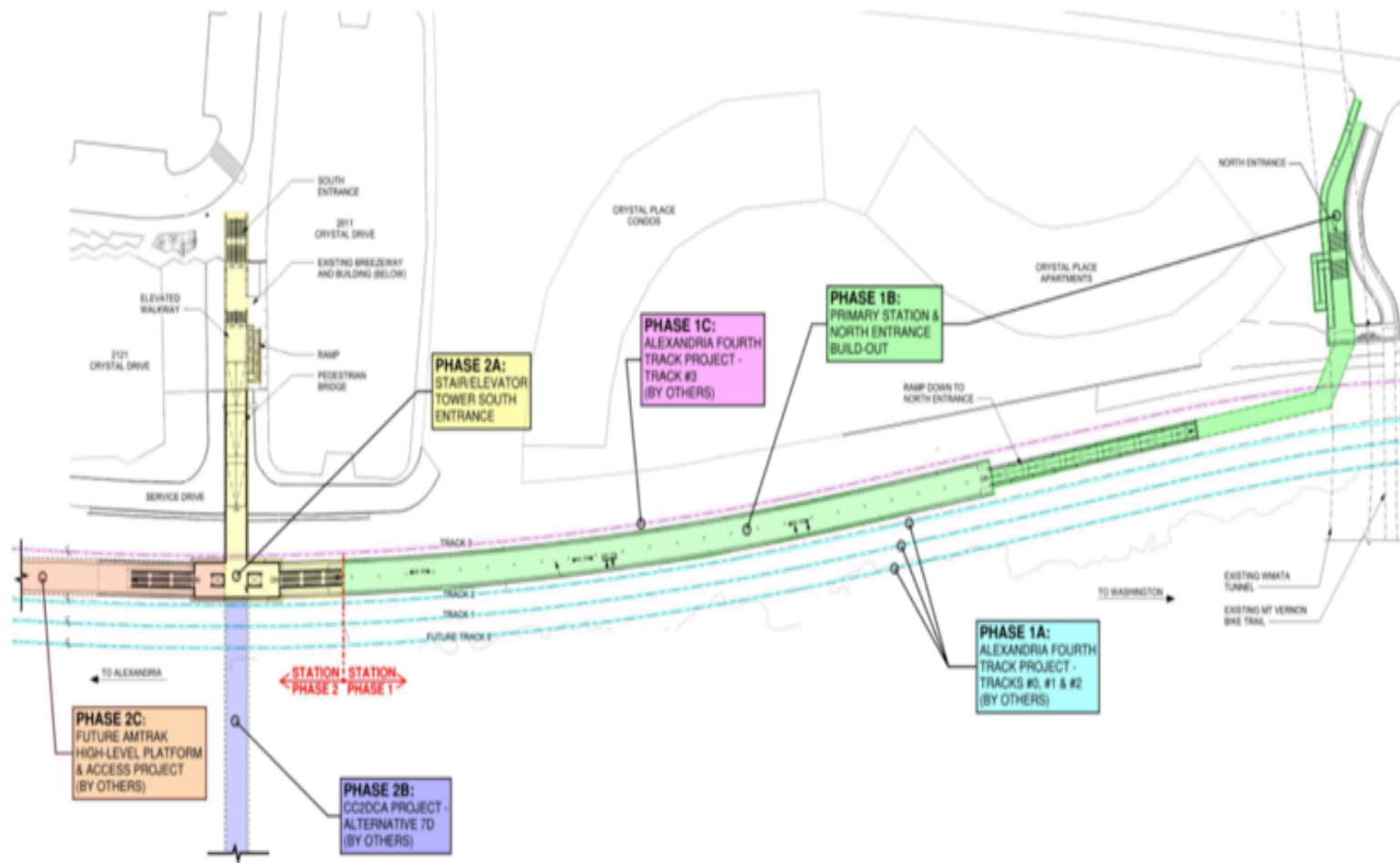
CCCA concerns

- Street safety, noise, and lack of coordination between VRE and the County

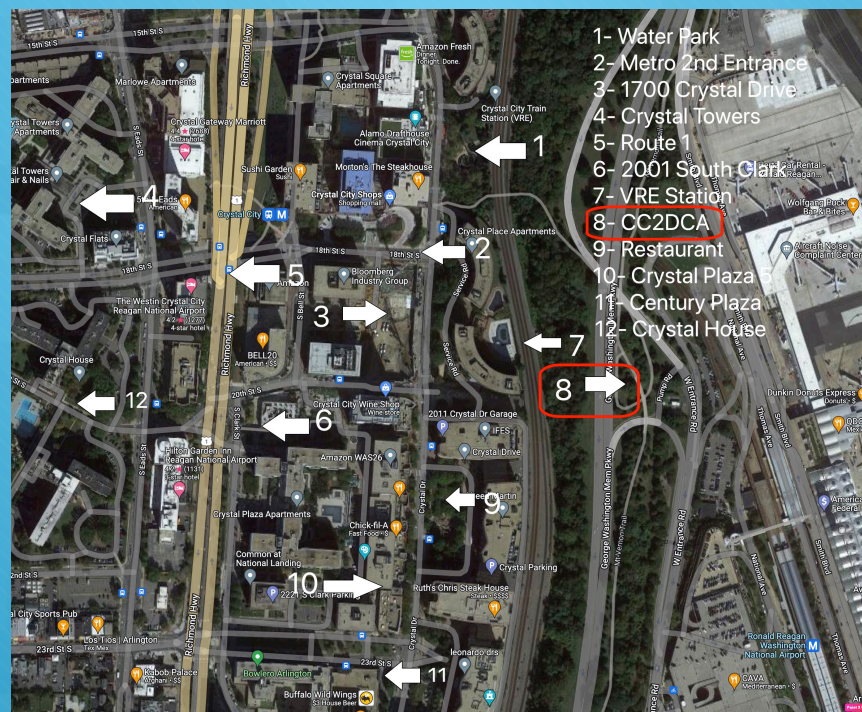
Current Phase: Final Design



PHASED APPROACH



8- CC2DCA



CC2DCA

Overview

- 2010: Origins in Crystal City Multimodal Transportation study
- 2019: VDOT added the project to its six year improvement plan
- Currently: Undergoing NEPA process (due to use of federal funds)
- Partners: VDOT, Federal Highway Administration and the County

Project

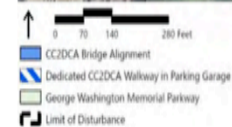
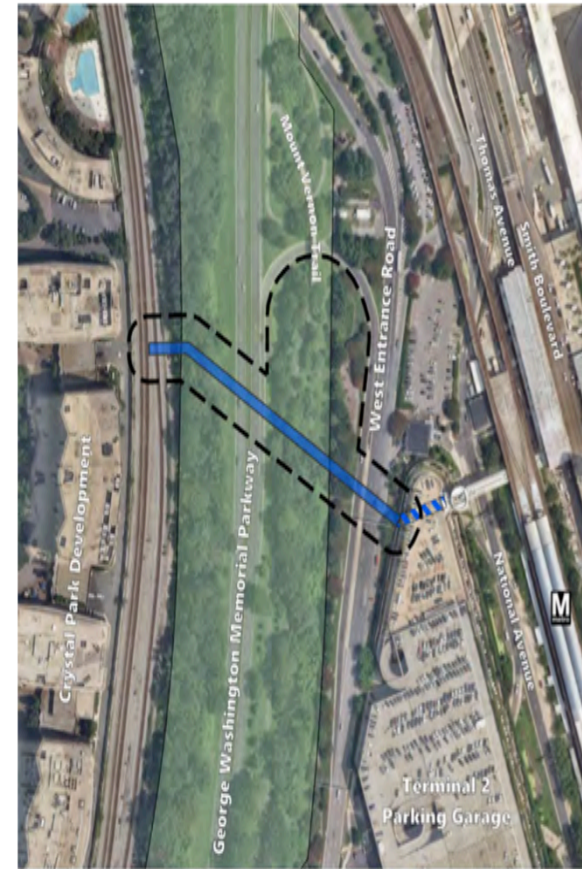
- To build a safe non-vehicular connection between Crystal City and DCA that facilitates intermodal connections and transit options

Construction

- To be determined, the project should enter the design stage by the end of 2023

CCCA Concerns

- Not enough coordination and communication between the County and VRE
- Timing not soon enough (2025 or longer)
- Design, will it be minimalist or a destination?



CC2DCA | Crystal City, Arlington, VA

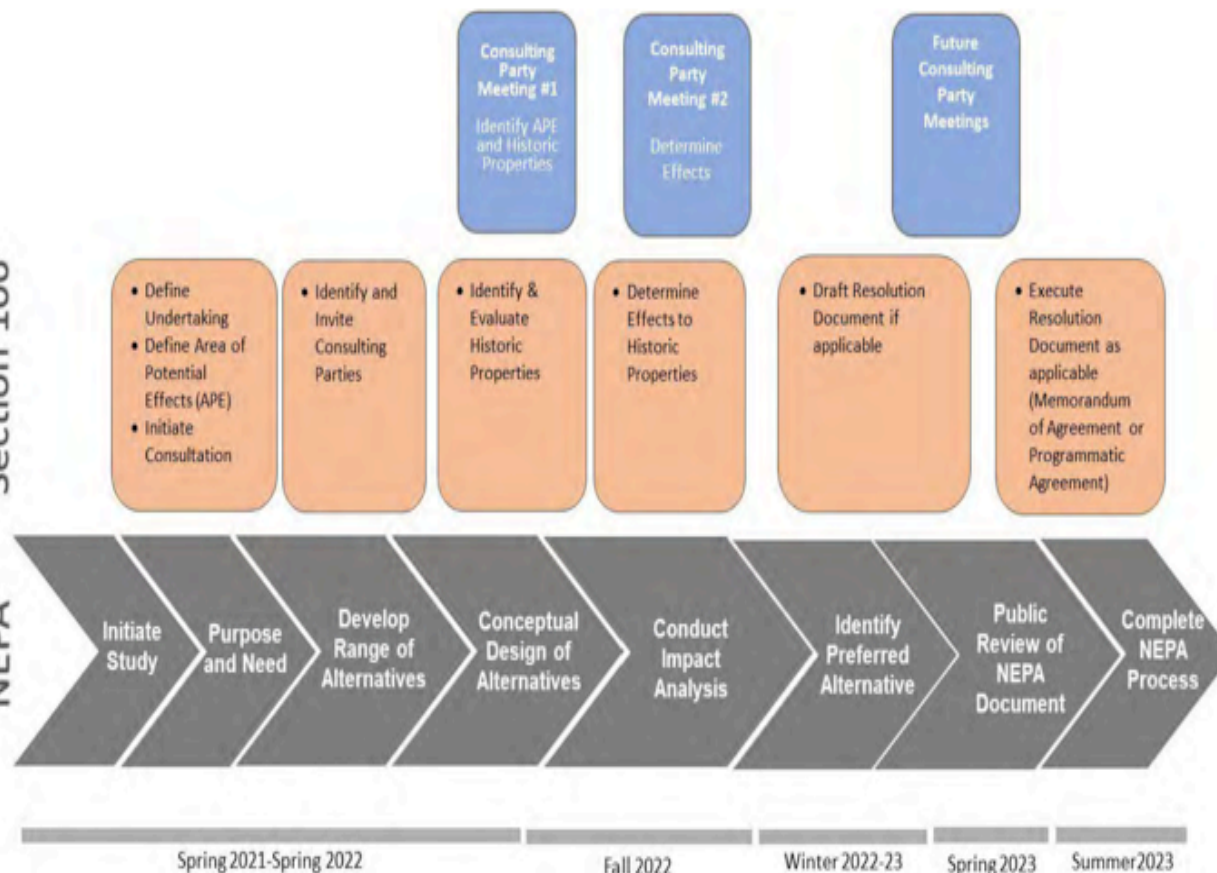
Alternative 7D Limit of Disturbance

Source: NearMap, National Park Service

Alternative 7D

Section 106

NEPA

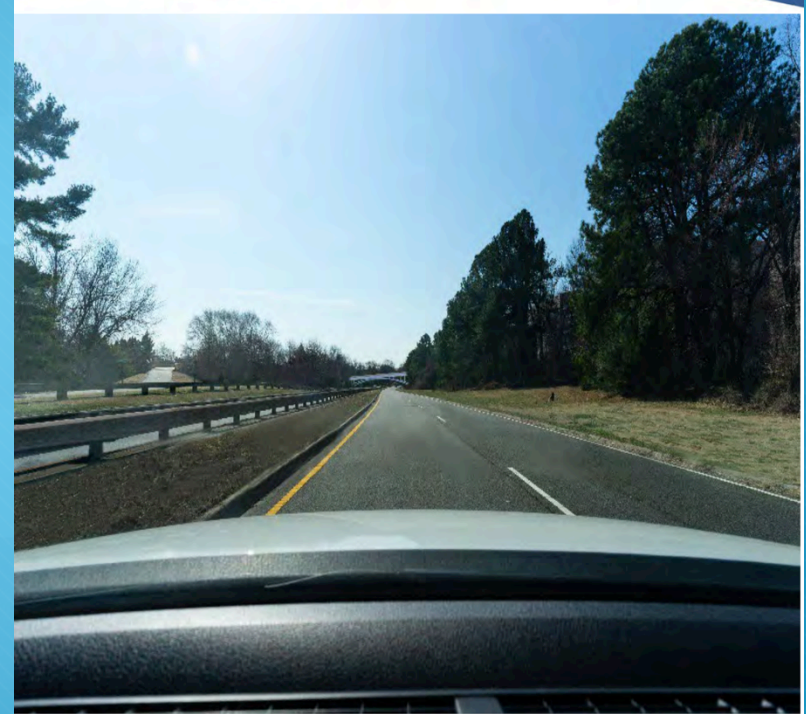


Views from the George Washington Memorial Parkway



F: "Urban Valley" – Alternative 7D

Northbound



B: Entering the "Urban Valley" – Alternative 7D

Southbound

Design Proposal Views from Mount Vernon Trail (MVT)

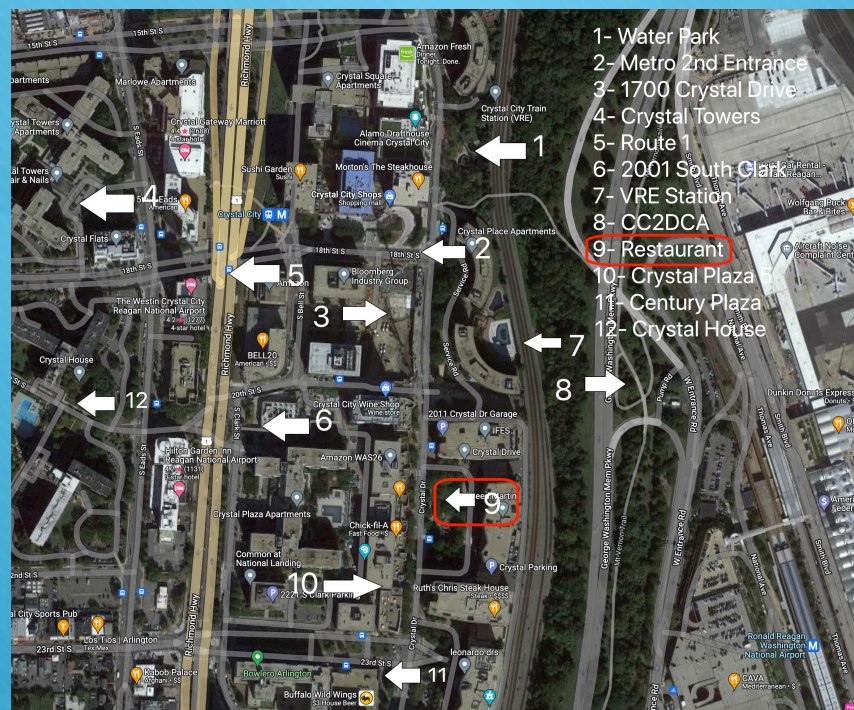


H: MVT southbound after crossing bridge over NB exit to airport – Alternative 7D,



H: MVT southbound after crossing bridge over NB exit to airport – Alternative 7D,

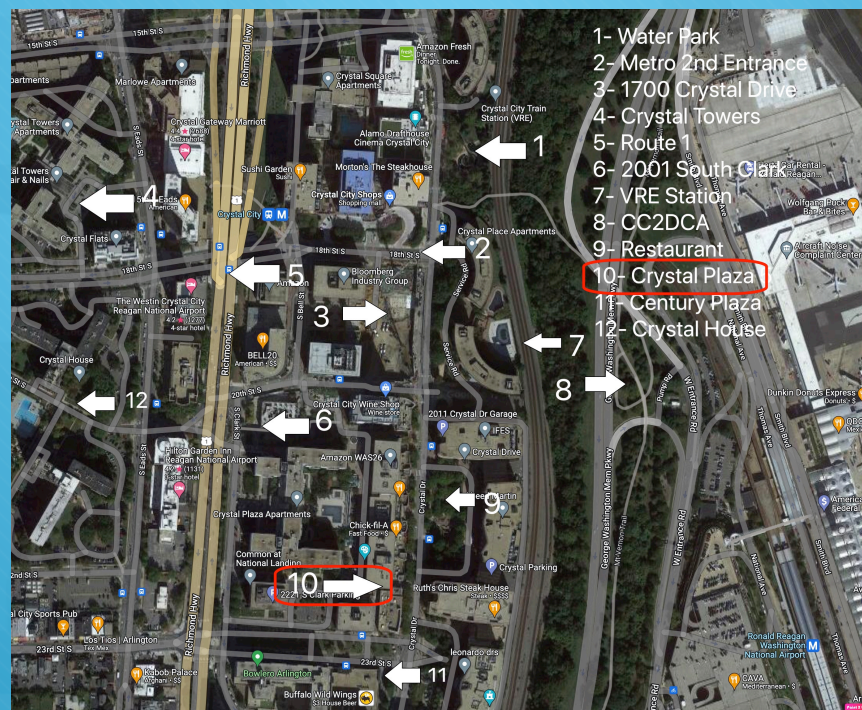
9- Dining in the Park





Illustrative 2121 Crystal Drive Dining in the Park

10- Crystal Plaza 5

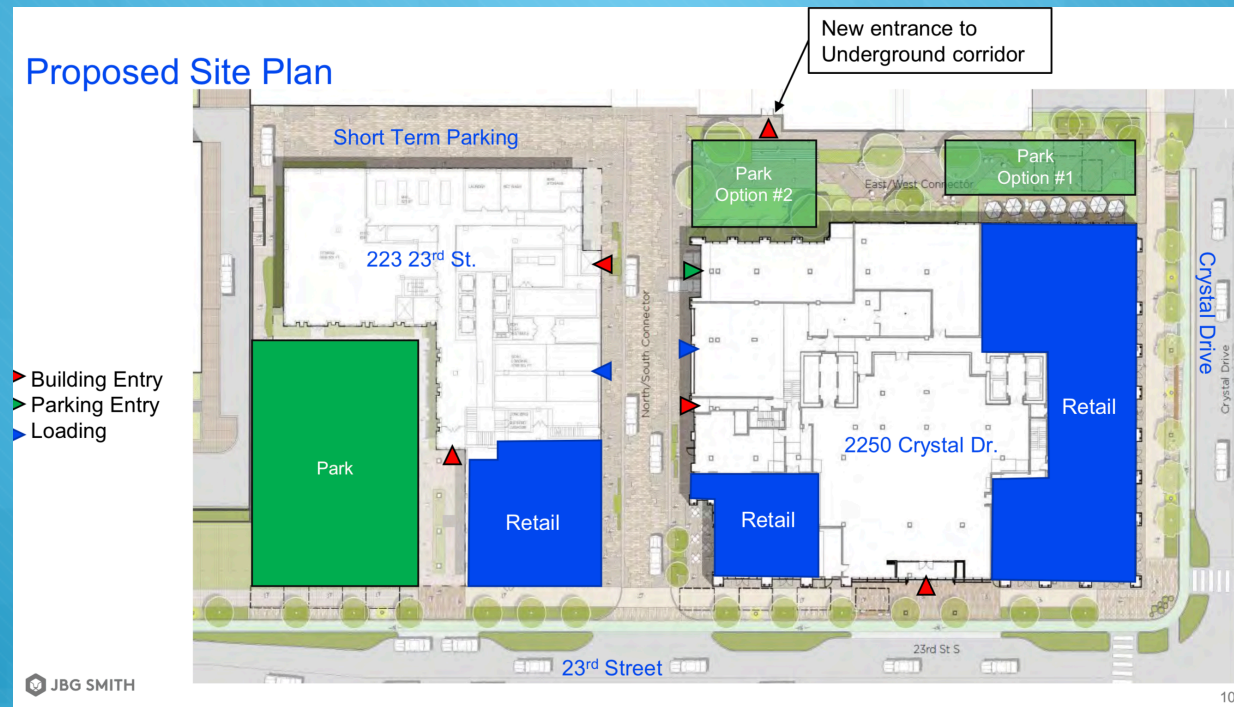


Current Proposal

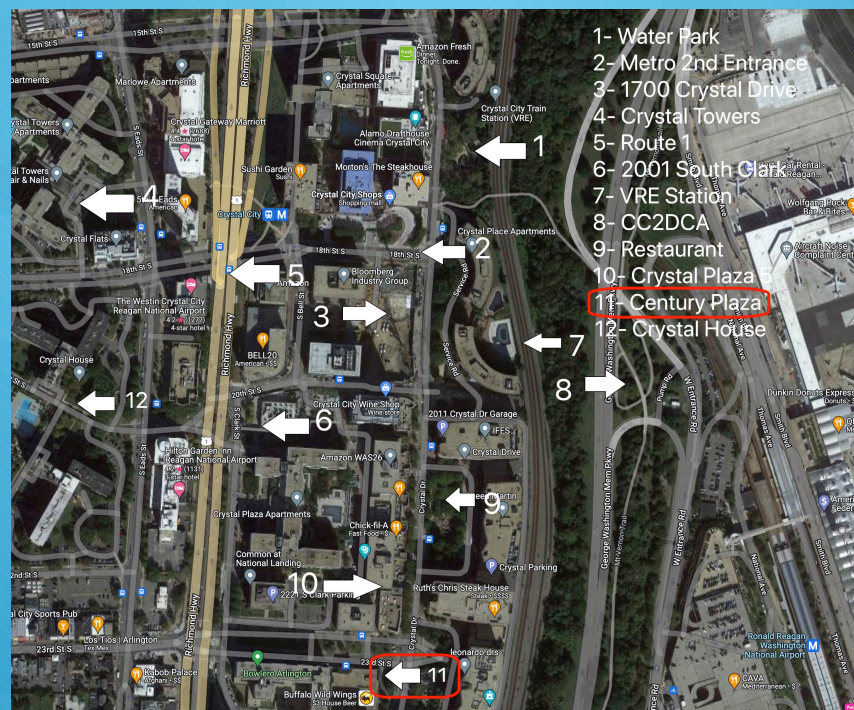


Note Change to Underground

Proposed Site Plan

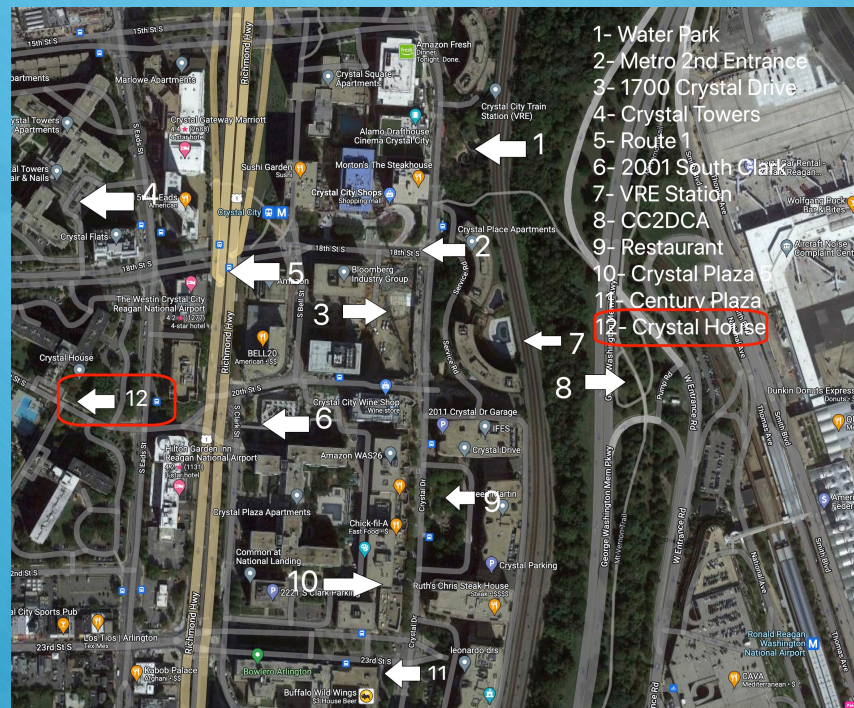


11- Century Plaza





12- Crystal House





Parks Department

- CIP is the County's Capital project list.
- We have numerous parks that need \$\$\$.