

# Arlington County Fire Department

---

Captain Nate Hiner  
May 17, 2023



**ARLINGTON**  
VIRGINIA







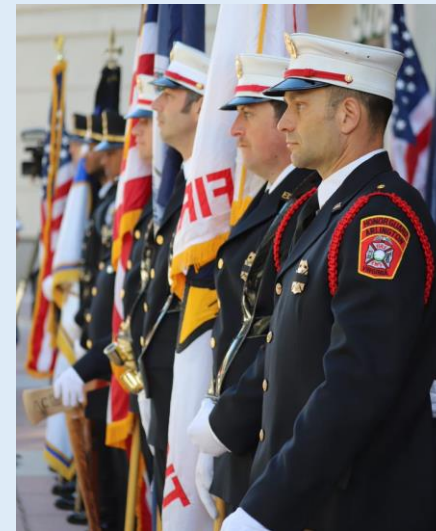
We serve  
the community  
with compassion, integrity  
and commitment through  
prevention, education and a  
professional response  
to all hazards.





*Tradition  
Professionalism  
Diversity*

*Integrity  
Consistency  
Leadership*



---

# Department Values





# Your Fire Department



Fire Chief David Povlitz

400 uniformed &  
civilian personnel

9 Fire Stations

Fire Training Academy

Fire Prevention Office

Fire Chief's Office

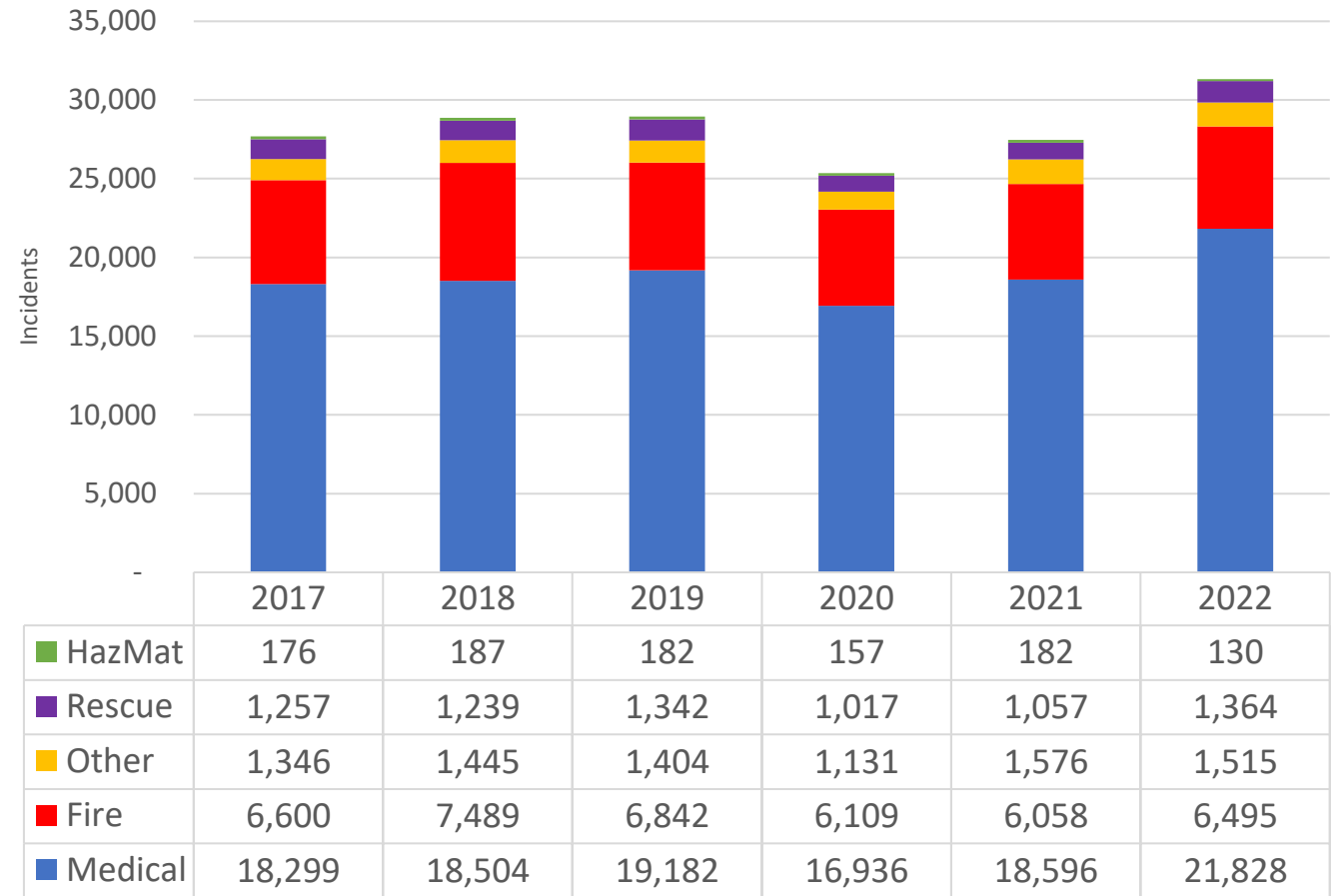
Logistics Center

Over 32,000 responses  
annually





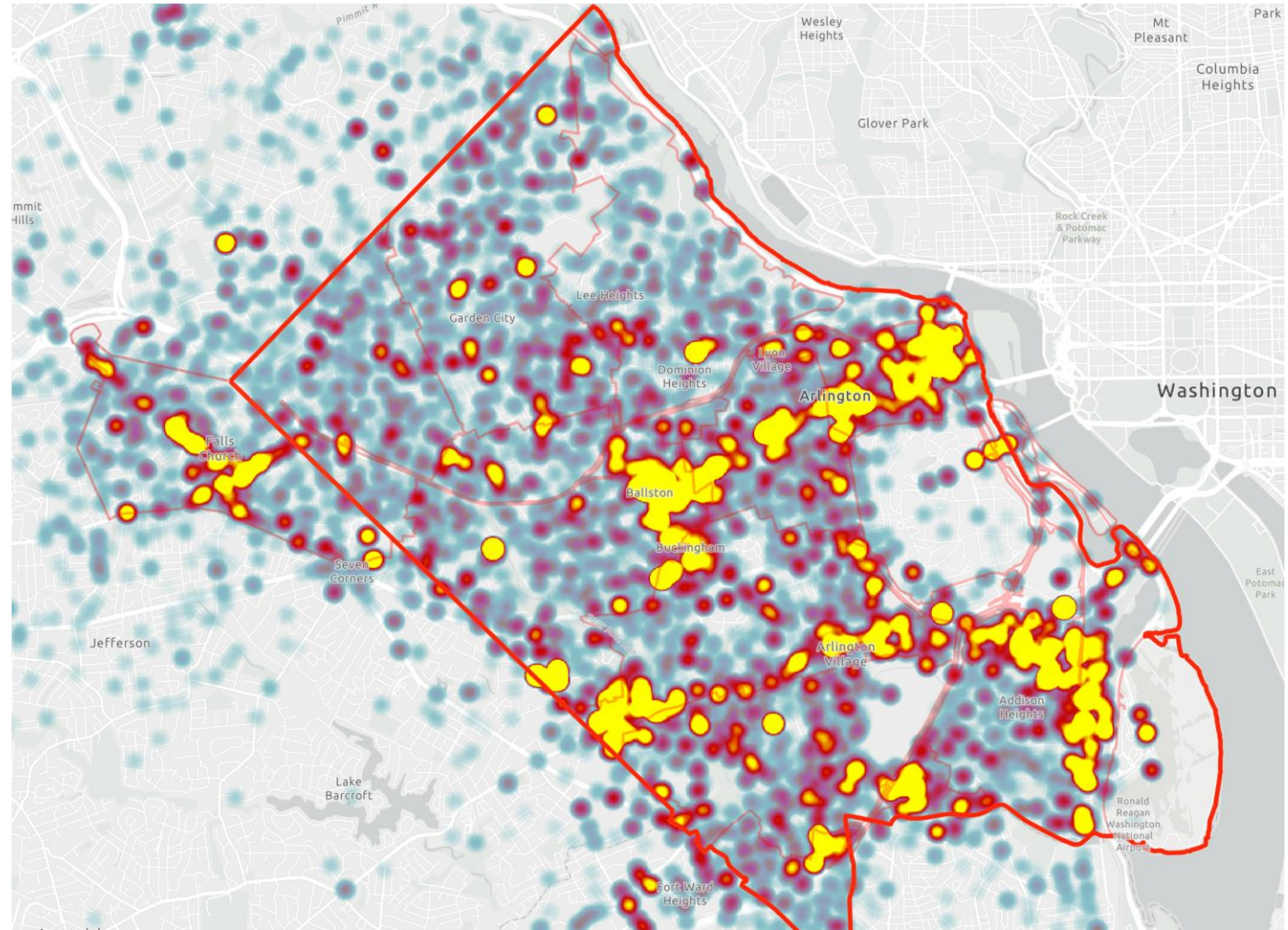
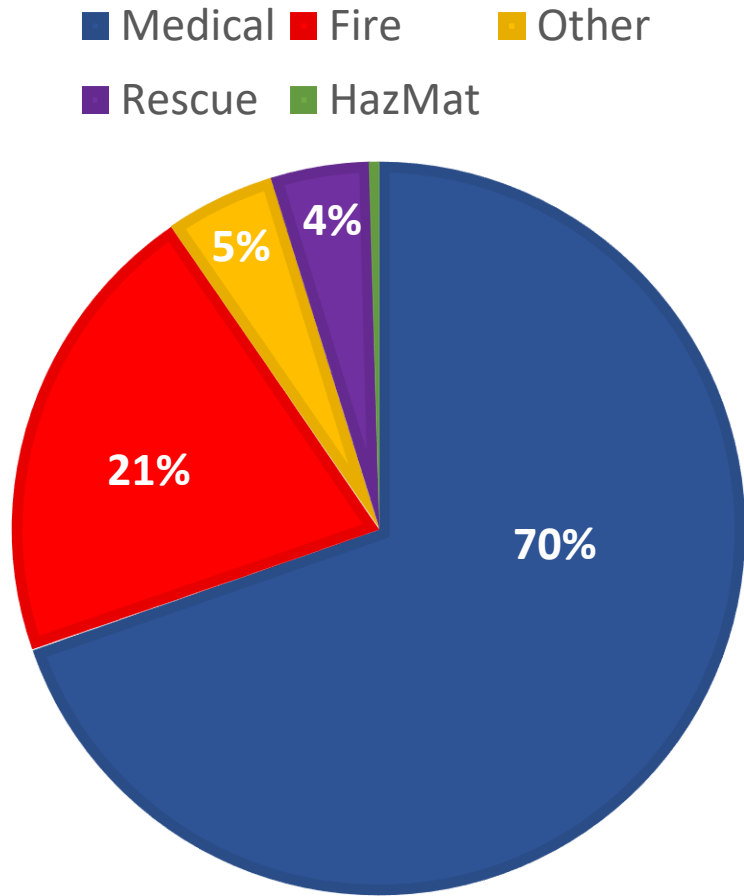
# Emergency Service Responses







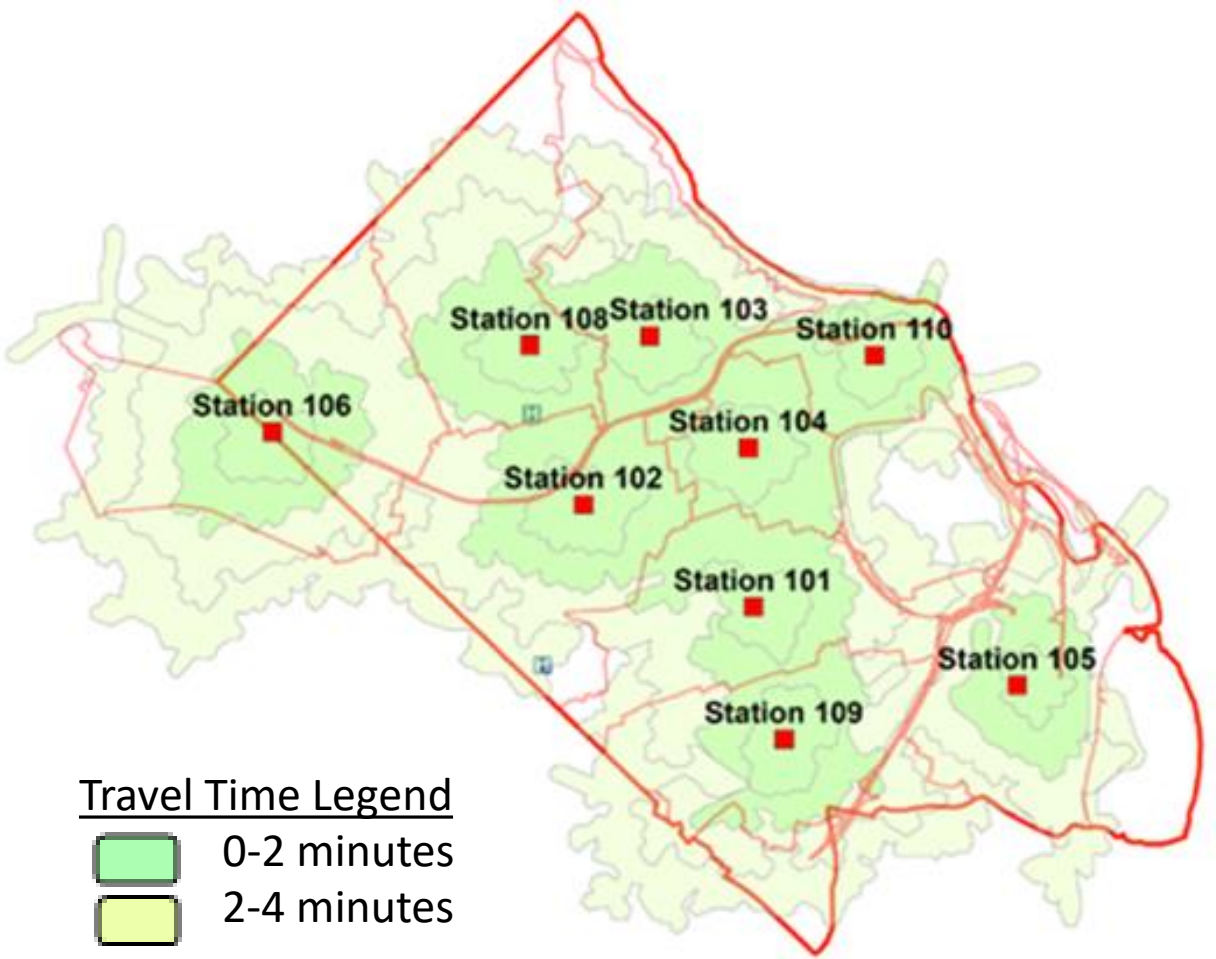
# 2022 Emergency Incidents





2 minutes  
4 minutes

# Fire Station Locations



Travel Time Legend

- 0-2 minutes
- 2-4 minutes

Station	Location	Units
1	Glebe Road	Engine, medic, battalion chief
2	Ballston	Engine, rescue, medic
3	Cherrydale	Engine, bomb unit, battalion chief
4	Clarendon	Engine, tower, medic
5	Aurora Highlands	Engine, ladder truck, medic
6	Falls Church	Engine, ladder truck, medic
8	Lee Highway	Engine, medic
9	Walter Reed	Engine, rescue, medic
10	Rosslyn	Engine, medic



# Emergency Service Resources

## 9 Fire Stations

9 Engines

2 Trucks/ 1 Tower

2 Heavy Rescues

7 BLS/ALS Transport Units  
(with an additional peak time unit)

2 Battalion Chiefs

2 EMS Supervisors

1 Command Aide

1 Safety Officer

1-3 Fire Marshals







# Specialties



Technical  
Rescue



Paramedics



Hazardous  
Materials



Fire Marshals



Water Rescue



Bomb Squad





# Progressive and Innovative



Advanced EMS practice

Integrated public safety approaches

Early technology adoption

Equity and inclusion

Health, wellness, and safety

Community engagement





# JANUARY

S	M	T	W	T	F	S
			1	2	3	4
5	6	7	8	9	10	11
12	13	14	15	16	17	18
19	20	21	22	23	24	25
26	27	28	29	30	31	

## Station Shift Schedule

24 ON - 24 OFF - 24 ON - 24 OFF - 24 ON - 4 DAYS OFF



- Rotating 24-hour shift among 3 platoons
- Our work week is called a “a tour” with 3 24-hour shifts with a day of in between, followed by a 4-day break
- One Kelly day (or day off) per 28-day cycle
- Average of 50 hours/week







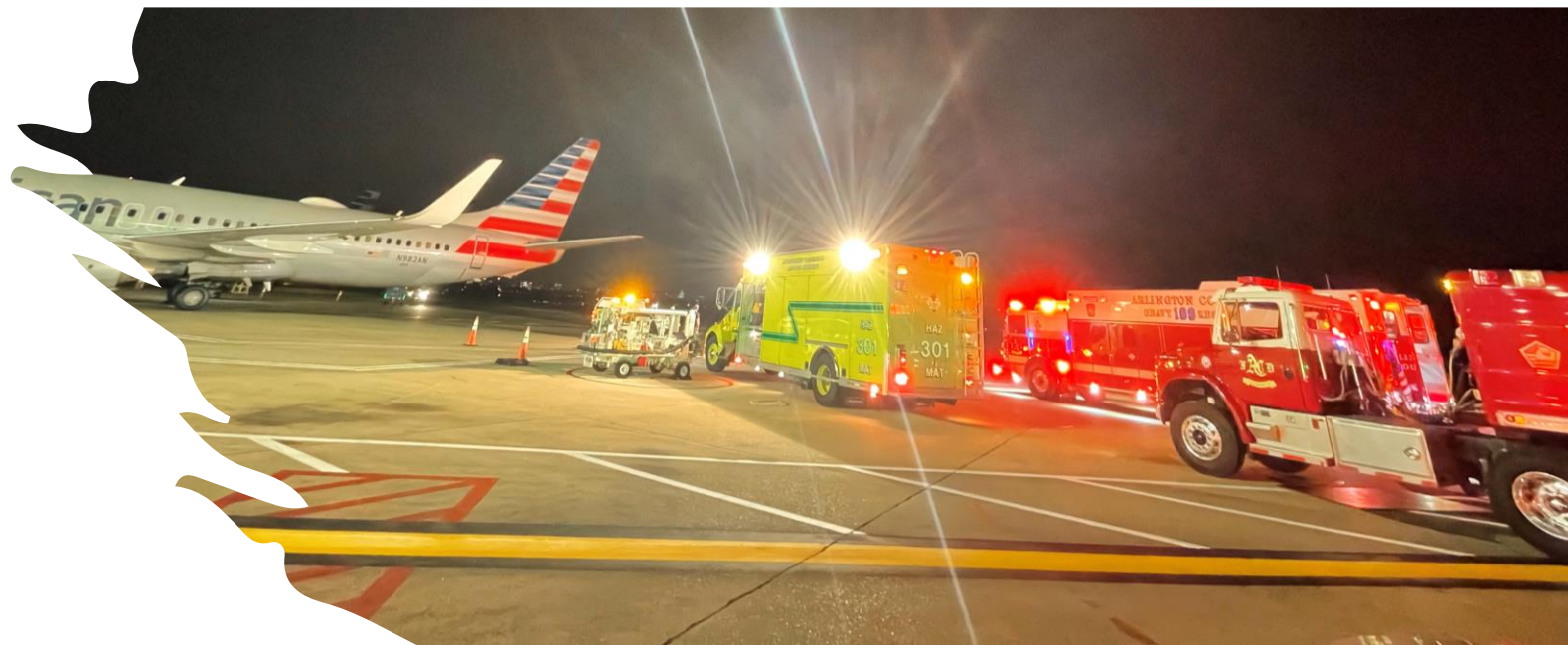
# Station Life

---



# Emergency Response

- Utilize automatic aid throughout the region
- Borderless response
- Seamless integrations between 911 centers
- Resource rich area





# Railway Hazards and Response

- 24/7/365 HazMat Team within Arlington
- Rapid reach back for mutual and automatic aid
- Partnerships with rail
- State and Federal support







# Incident Response Collaboration

- Local, State, and Federal partnerships
- Engagement with private sector
- National Incident Response Framework
- National Incident Management System
- Incident Command System





# Community Involvement

- Follow us on social media - @ArlingtonVaFD
- Sign up for Arlington Alerts - [Arlington Alert – Official Website of Arlington County Virginia Government \(arlingtonva.us\)](#)
- Assist with agency accreditation







Question & Answer

[fire.arlingtonva.us](http://fire.arlingtonva.us)