

Public Space Projects Update – Crystal City

Presentation to the Crystal City Civic Association

Marco Antonio Rivero
Department of Parks and Recreation

January 17, 2024



Public Space Projects – Agenda

1. Metro Market Square
2. Center Park
3. Short Bridge Park
4. 23rd Street/Eads Park
5. Arlington Junction Park
6. 15th Street Park

Metro Market Square

Location: Public space will face South Bell Street, 18th Street South, and Crystal Drive.

Project: DPR is working with a design consultant on the upcoming Park Master Plan (PMP) and Design Guidelines process for the Metro Market Square public space. The Crystal City Sector Plan (CCSP) identifies this public space as “Park #6”, approximately 43,000 sq. ft., and will be designed in coordination with other area projects (18th Street South street improvements and the Crystal City Metro Station East Entrance, both managed by the Department of Environmental Services (DES)).

The CCSP further identifies this space as a hardscaped space which will allow for market uses, temporary retail, and outdoor entertainment, in addition to opportunities for benches, tables, game tables, and added tree canopy/landscaping.

DPR Project Manager: Marco Rivero

Anticipated First Engagement: 1st Quarter 2024



Center Park

Location: Public space will face South Bell Street and 20th Street South.

Project: The Crystal City Sector Plan (CCSP) identifies this space as “Park #7” which is an approximately 74,000 sq. ft. public space envisioned as an “...open space with civic character, it will be the largest park in Crystal City...would allow for a wide variety of uses, such as passive recreation, exhibitions, concerts, festivals, cafes, some temporary kiosk retail, and evening outdoor movies” among other potential uses.

In January 2024, the County received a public park easement for approximately 45,000 sq. ft. of public space, with the understanding that the remaining public space proposed would come as part of a future development phase. The County envisions a park master planning process that will engage the community on the potential programmed elements, their approximate location, and other features for the entire 74,000 sq. ft. public space.

DPR Project Manager: Marco Rivero

Anticipated First Engagement: To Be Determined



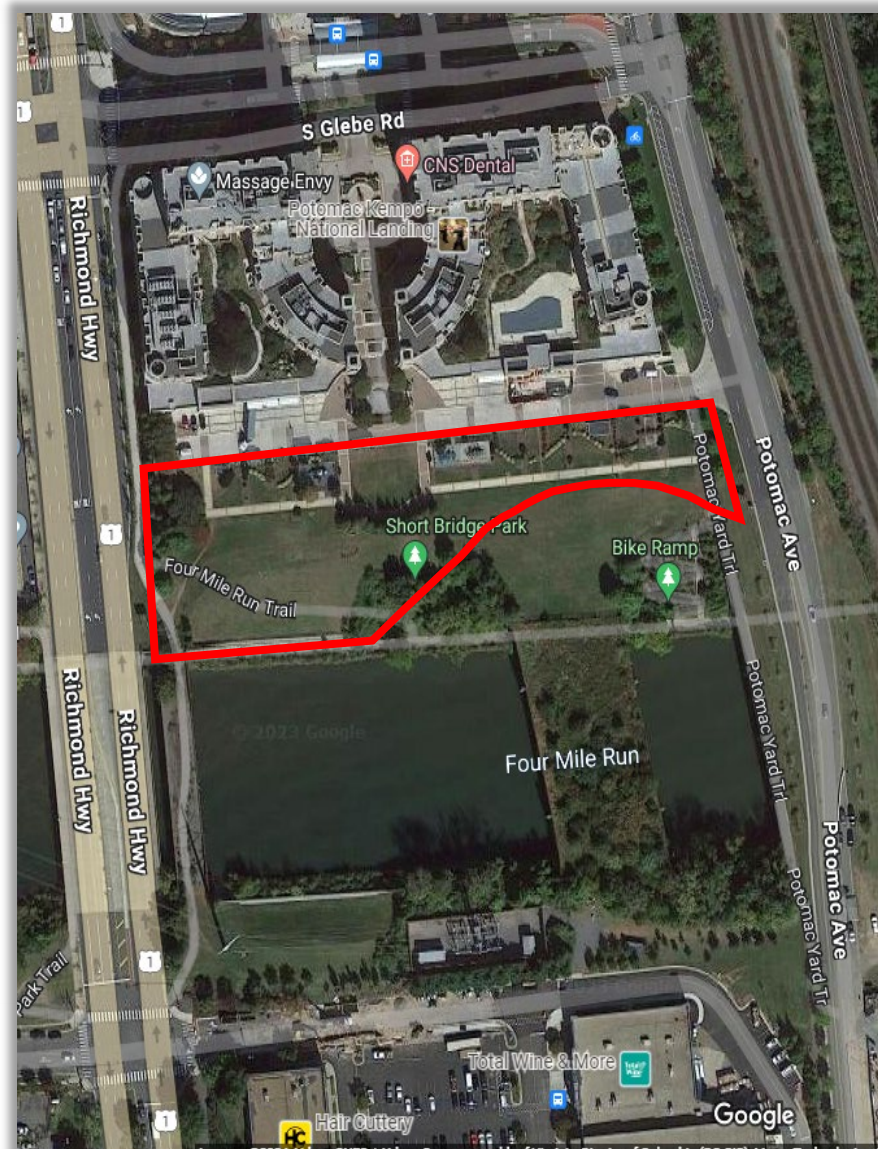
Short Bridge Park

Location: Potomac Yards, 3920 Potomac Avenue

Project: Park Master Plan was adopted by the County Board in 2019. Final design process will engage the community and take the high-level conceptual park master plan to a more detailed set of plans that are construction ready. Improvements include a 5,000 square foot dog run, playground, overlook, native plant meadow, more trees, shade structures, seating, site furnishings, and signage. Construction is funded in the out-years of the 2023-2032 Capital Improvement Plan (CIP) in Fiscal Year 2025.

DPR Project Manager: Bethany Heim

Anticipated First Engagement: 2nd Quarter 2024



23rd and Eads Street Park

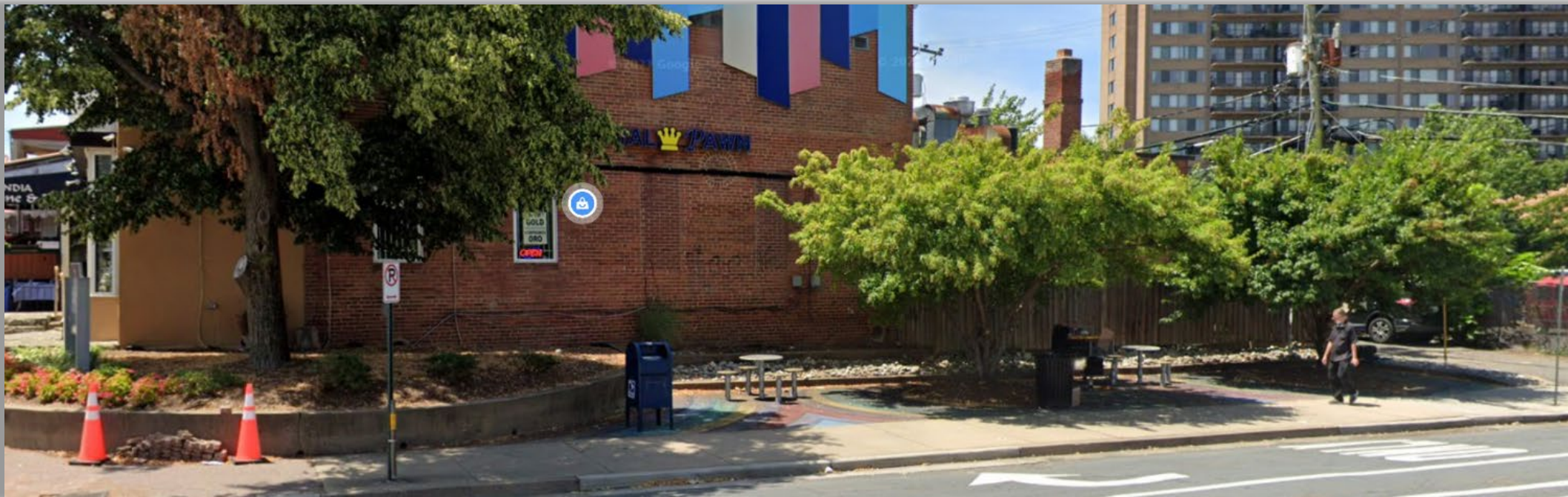


Location: Northeast corner of 23rd Street South and South Eads Street

Project: Park renovation that will enhance the site's aesthetics, amenities, and visibility. The park improvements will create a welcoming and inviting space for visitors to gather and rest. The engagement process will also solicit potential park names. Site is approximately 900 square feet. Budget is \$475,000 for design, survey, permitting, soft costs and construction.

DPR Project Manager: Bethany Heim

Anticipated First Engagement: 2nd Quarter 2024



Arlington Junction Park



Location: 1051 South Eads Street

Project: The .9-acre park renovation, consolidating the former 'Teardrop Park' parcels, features open lawn areas, stormwater management with a metal bridge, new walkways, a raised pedestrian crosswalk connection at 11th Street South, diverse seating areas with custom furnishings, a dog relief spot, signage and wayfinding pylons, mist-emitting structures. Landscape features include: boulder walls, bermed landscape beds and landscaping featuring native species supporting habitat and climate. The project is currently out to bid and anticipating County Board contractor Award of Contract March 2024.

DPR Project Manager: Jeanette Ankoma-Sey

Anticipated Start of Construction: 2nd Quarter 2024

15th Street Park

Location: Public space will face South Bell Street, 15th Street South, and Crystal Drive. (Identified as “Park #3”, Garden Park, approximately 33,500 sq. ft. in the CCSP).

Project: After a long hiatus, the Department of Community Planning, Housing and Development (CPHD) restarted conversations with the developer. The County is working interdepartmentally to determine whether the County would support a license agreement for the interim park space at the corner of 15th Street South and re-aligned South Clark Street, while still securing a permanent park easement on the adjacent space fronting Crystal Drive. Once the negotiations with the developer have concluded, the County will provide a timeline for the future park’s development.

Furthermore, the Department of Environmental Services (DES) indicated that they have completed their 100% design for the redesign of 15th Street South. The anticipated completion is in Spring/Summer 2024.

DPR Project Manager: Max Ewart

Anticipated First Engagement: To Be Determined



THANK YOU!

Questions?