



JANUARY 2024 GENERAL
MEETING

AGENDA

- 1) Officer Reports
- 2) Crystal City Parks- Marco Rivero
- 3) Crystal House 3- Danny Ross.
- 4) Alexandria's Monumental Development

PRESIDENT'S REPORT

- Underground Meeting Later in the Week
- Increase Boundary to include Arlington's Pentagon Yard
- Dues due!
- Always need volunteers! (250th US B-Day)

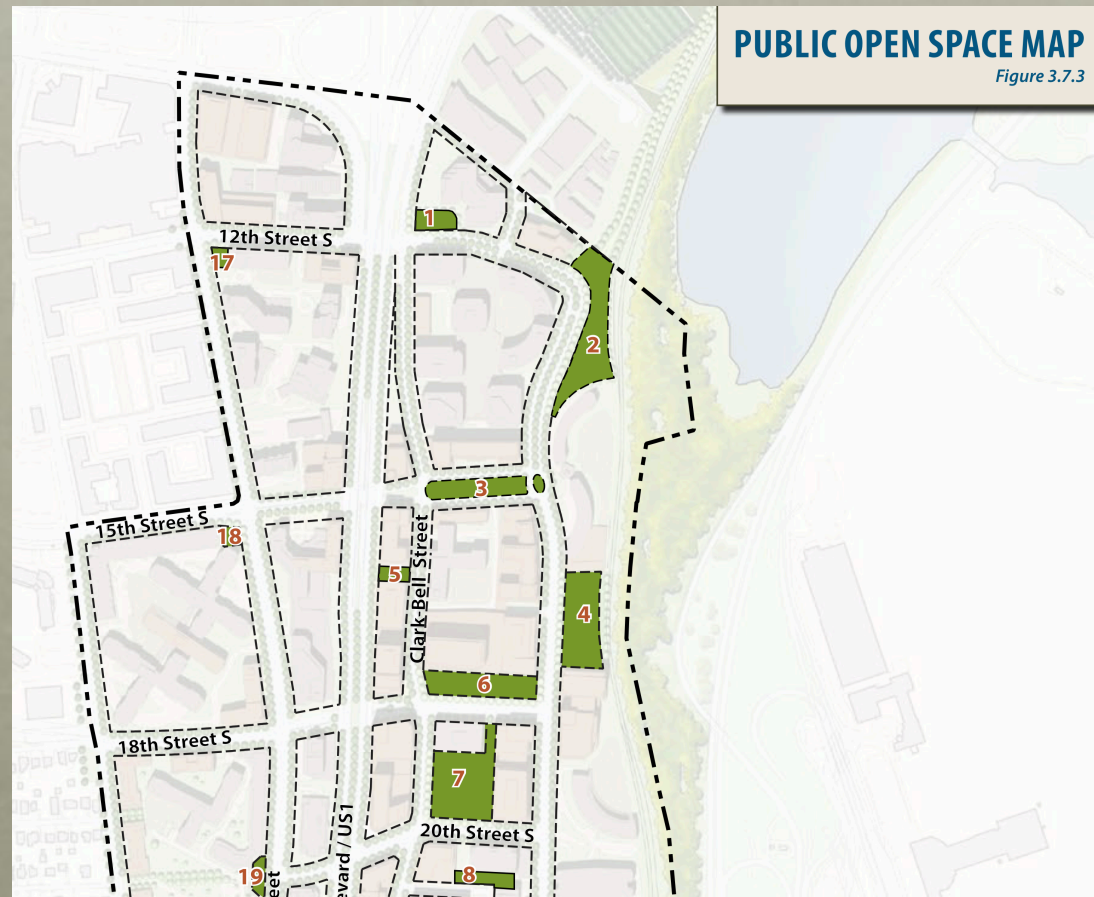
OTHER OFFICER REPORTS



AGENDA

- 1) Officer Reports
- 2) Crystal City Parks- Marco Rivero
- 3) Crystal House 3- Danny Ross.
- 4) Monumental Alexandria Development

CRYSTAL CITY PARKS



CRYSTAL HOUSE 3

Façade (20th St. S. & S. Eads St. Corner Street View)



Approved



Proposed

ALEXANDRIA'S MONUMENTAL

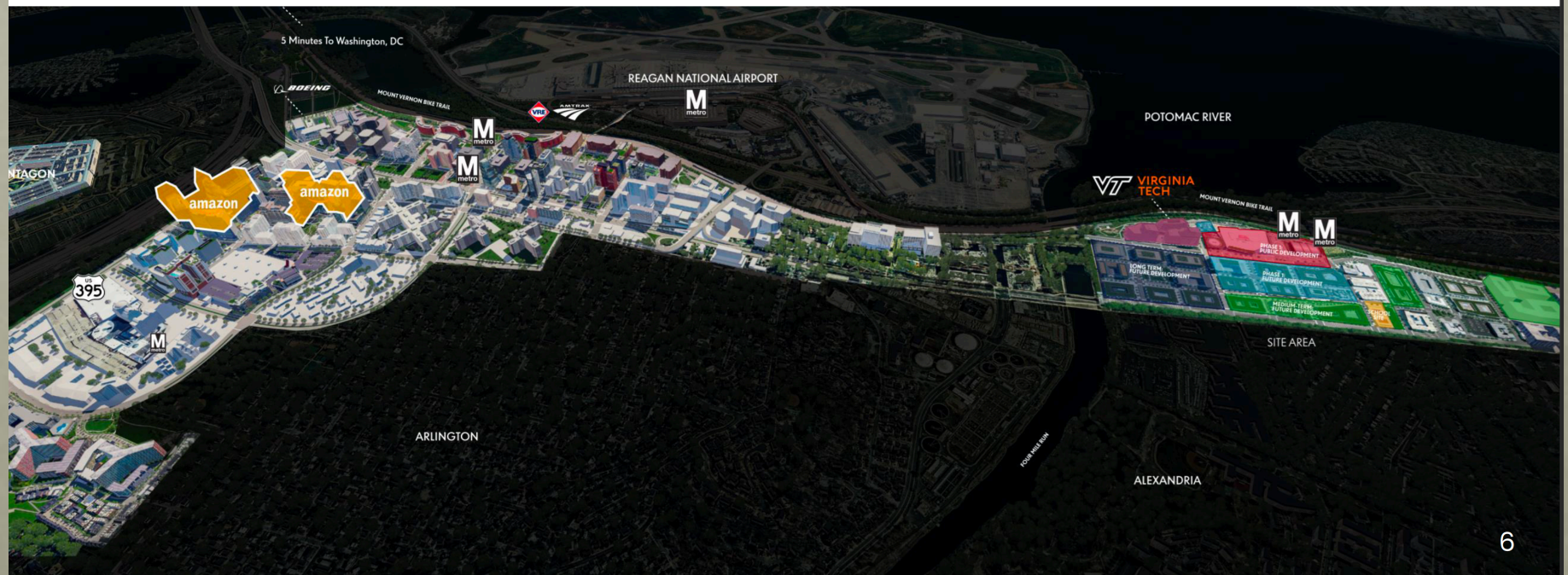
- 1) In our March Meeting we will have a presentation from Alexandria.
- 2) Our Dec. 13th Memo, highlighted three concerns. We still have those concerns:
 - 1) Local Transportation
 - 2) Metro
 - 3) Impact on Arlington resources.

BASICS OF PROJECT

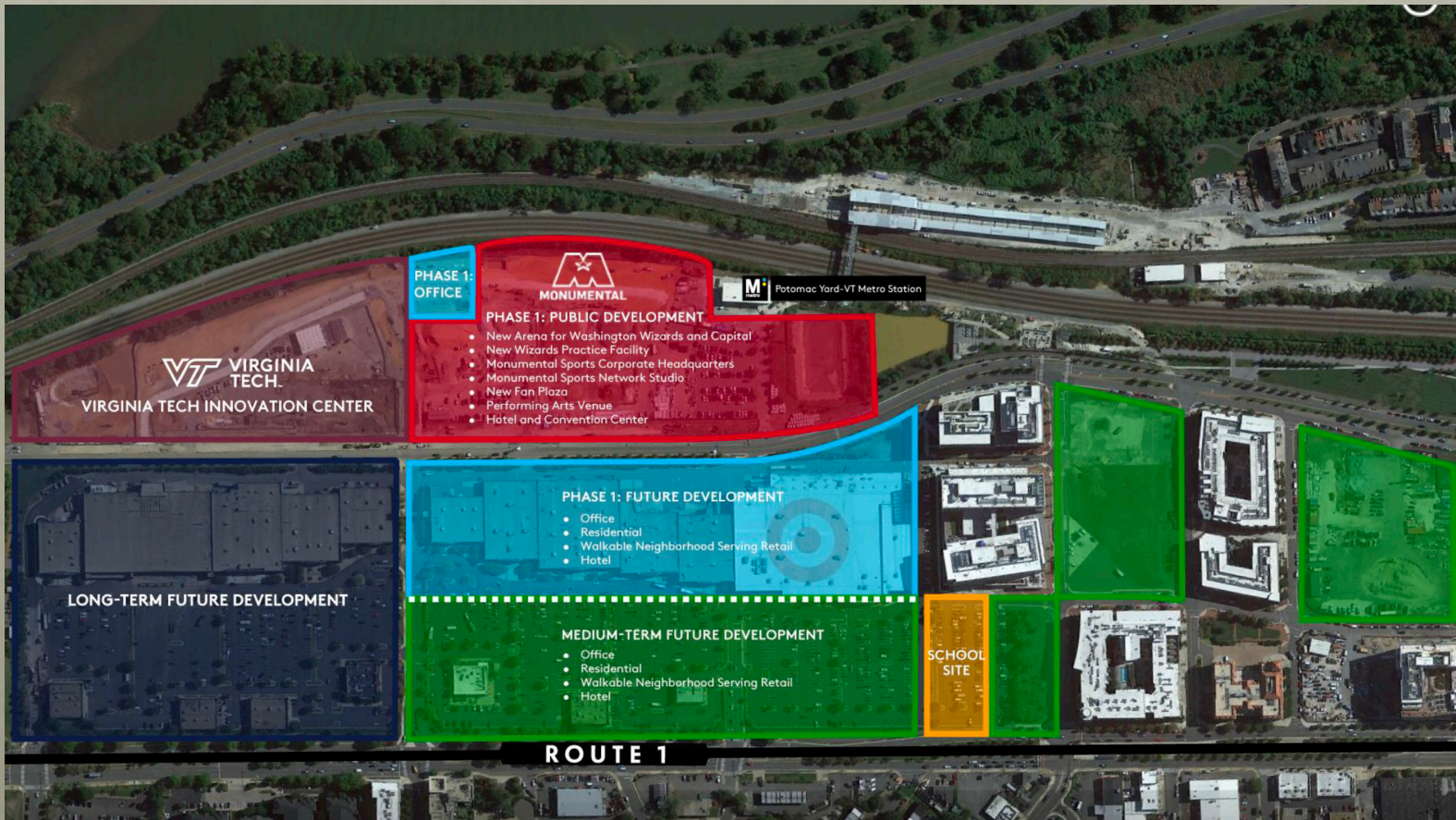
- New Arena for Caps/Wizards.
- Office Headquarters
- New Performance Venue
- Plaza for events

Arena Development Area

Monumental will join Amazon HQ2 to create the nation's premier sports, entertainment and innovation corridor complete with an arena, concert venue, hotel and conference center, and mixed-use housing, retail, and restaurants.



EXACT LOCATION





TRANSPORTATION

Ahead of the announcement, a preliminary transportation analysis was completed to understand initial transportation priorities for the project.

Transportation Planning Timeline

- **Summer-Fall 2023** – preliminary on-site analysis and planning conducted in cooperation with VDOT to shape initial budget
- **Late 2023** – Kimley Horn engaged to undertake next phase of study
- **Early 2024** – Preliminary findings and further community feedback
- **2025+** – Final engineering and implementation

Initial Findings + Key Principles

- Development density of Potomac Yard with and without the arena is roughly equivalent
- Main traffic impact difference is in **peak loads** on event days
- Top priorities for infrastructure improvements are mitigating peak loads and protecting surrounding neighborhoods

Robust Budget Capacity

- \$25 million for transportation and \$85 million for on-site infrastructure improvements
- Additional \$200M to address needed regional improvements and mitigation
- Continued collaboration with Amazon HQ2 planning to fund comprehensive corridor solution

We are now engaging the community, alongside nationally-recognized transportation expert Kimley Horn, to create a world-class transportation plan that starts by addressing four key issues.



Traffic During Games & Events

Move people in and out of events with minimal disruptions to the local community with a 2,500-space underground parking garage, shuttle access to other nearby parking, improved Metro access, dedicated rideshare areas, and rideshare promotions.



Protecting Neighborhoods

Protect nearby neighborhoods, ensuring eventgoers do not park on local streets and that traffic does not disrupt daily life.



Existing Route 1 Multi-Modal Improvements

Complete a number of important transportation improvements in the Route 1 corridor, including DASH upgrades, intersection and turn lane upgrades, and additional EV charging stations.



Transit Access

Address capacity at nearby stations and strengthen transit access within the local community.

THANK YOU!

- Next Meeting Wed. March 17th 2024
- Membership Renewal!
- <https://www.crystalcitycivic.org/renew-your-membership/>
- Future Topics?