

# Long Bridge and Alexandria Fourth Track Projects

Crystal City Civic Association Meeting  
March 20, 2024



# Presenters

**Meredith Judy**

VPRA, Community Affairs Manager

**Todd Hopkins**

VPRA, Project Manager, Alexandria Fourth Track

**Jason Bortz**

VRE, Project Manager Design and Construction

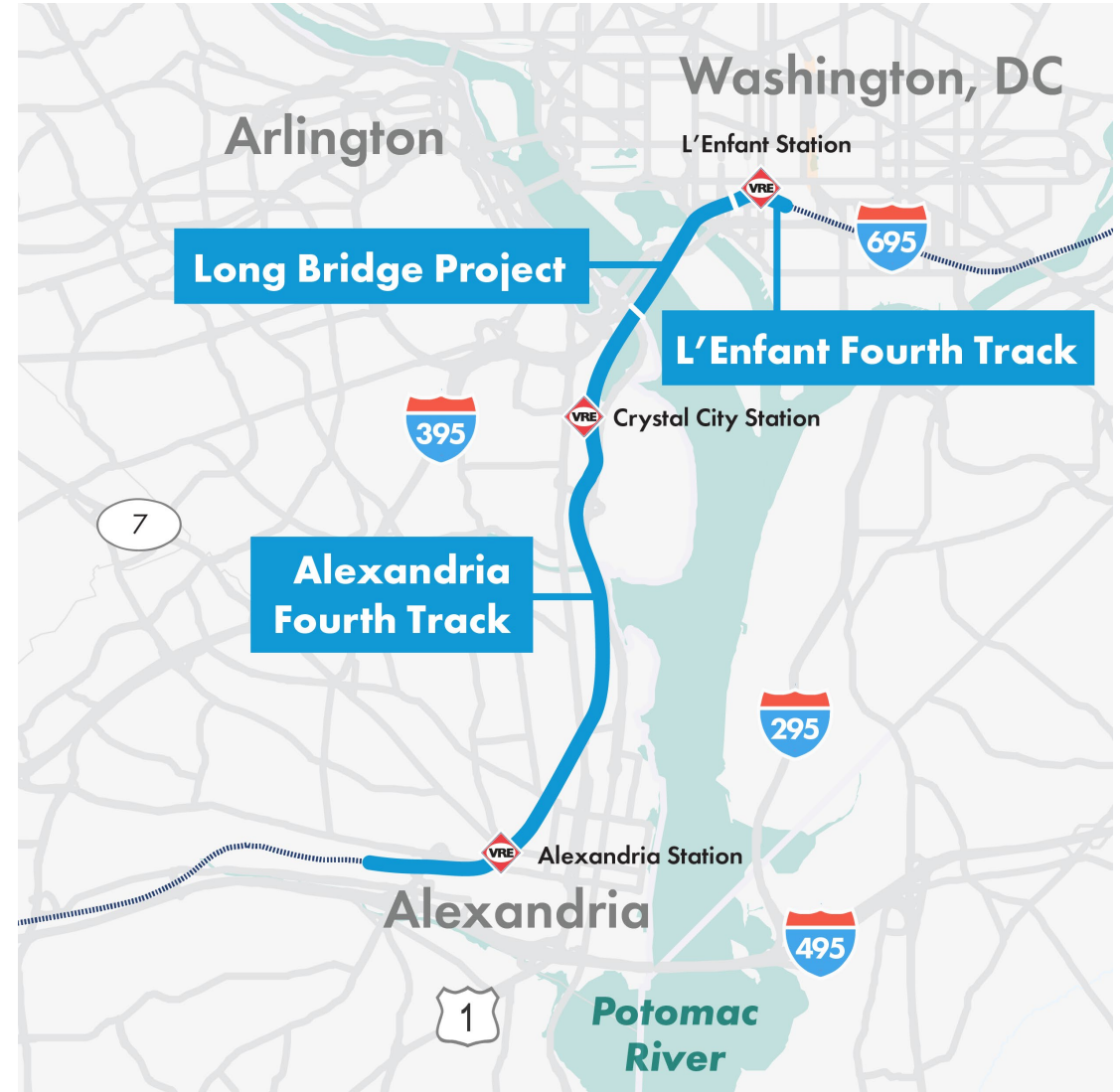
**Mark Schnauer**

VPRA, Project Manager- VRE Coordination



# Tonight's Agenda

1. Welcome
2. Virginia Passenger Rail Authority (VPRRA)
3. Long Bridge Project
4. Alexandria Fourth Track Project
5. Q&A



# Virginia Passenger Rail Authority

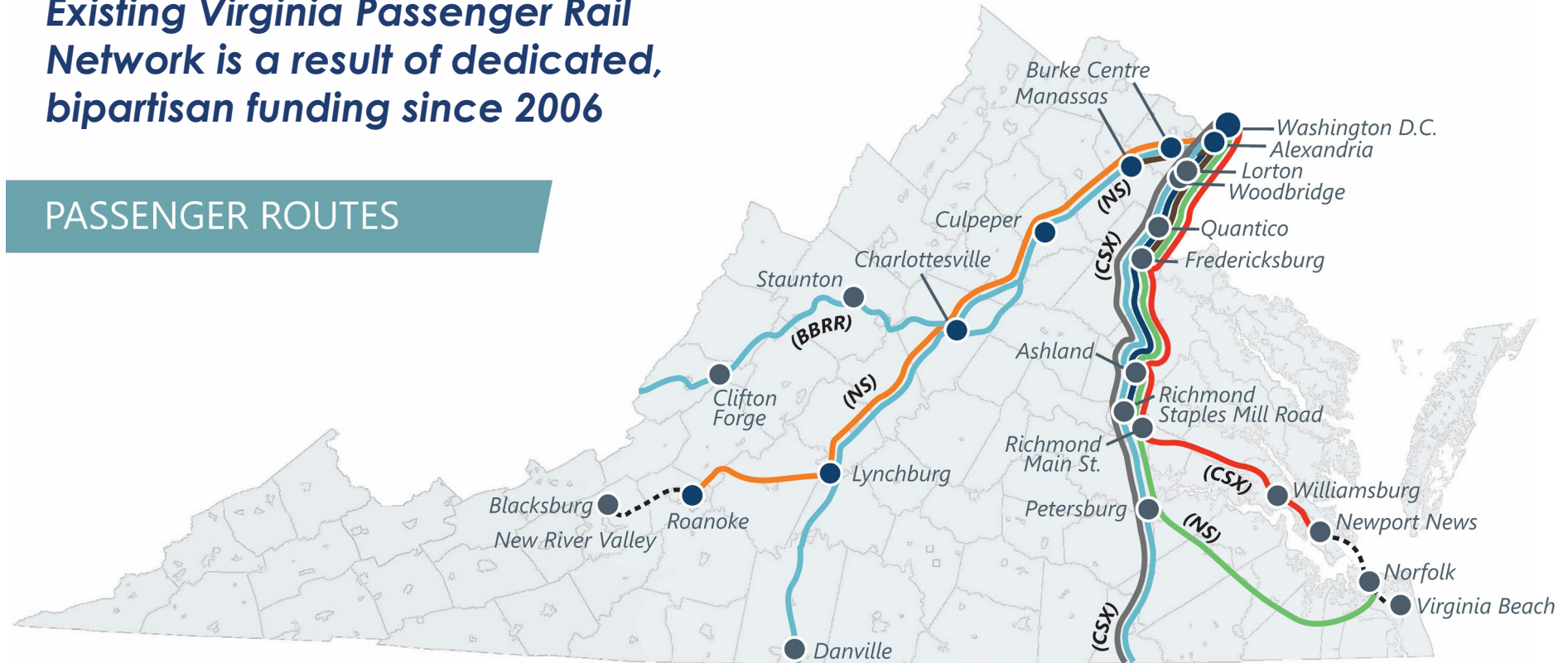
- Created in 2020 by the General Assembly
- Responsible for expanding and promoting passenger and commuter rail
- Given all powers necessary for carrying out its statutory purposes:
  - Manage passenger rail in Virginia
  - Design, build, finance, and maintain rail facilities
  - Direct recipient of USDOT Grants
- Partners with Amtrak and VRE to operate passenger and commuter rail service
- Governed by a 15-Member Board



# Virginia Passenger Rail Network: 2024

*Existing Virginia Passenger Rail Network is a result of dedicated, bipartisan funding since 2006*

## PASSENGER ROUTES



### Virginia State-Supported Services

- Washington-Roanoke (Route 46)
- Washington-Newport News (Route 47)
- Washington-Norfolk (Route 50)
- Washington-Richmond (Route 51)

### Host Railroads

- CSX** - CSX Transportation
- NS** - Norfolk Southern
- BBRR** - Buckingham Branch
- Passenger Station

### Other Services

- Other Amtrak State-Supported
- Amtrak Long-Distance
- VRE Commuter Rail
- - - Thruway Bus

### Four State-Supported Amtrak Routes: 8 daily roundtrips

8 daily roundtrips

- Roanoke: 2
- Richmond: 1
- Newport News: 2
- Norfolk: 3

### Five Amtrak Long-Distance Roundtrips

### One NC State-Supported Roundtrip

### Two Virginia Railway Express (VRE) Commuter Routes: 16 daily roundtrips

16 daily roundtrips

- Manassas: 8
- Fredericksburg: 8

**Phase 1 & Phase 2 Projects** unlock new passenger rail service and set the stage for future service expansion.

After **Phase 1**, three new VRE (including late night/weekend service) and two new Amtrak daily roundtrips will begin service.

After **Phase 2**, two new VRE and three new Amtrak roundtrips will begin

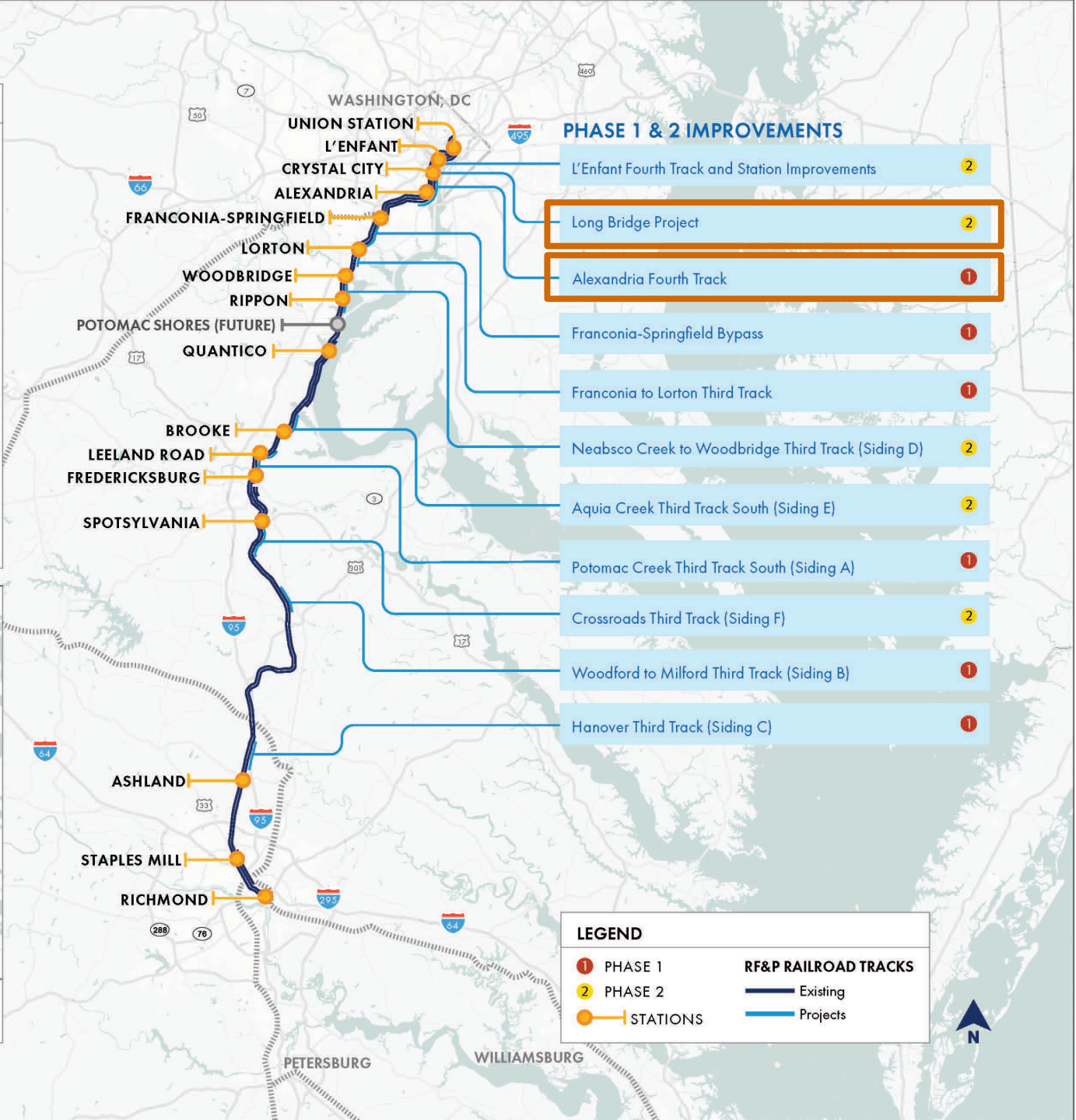
**PHASE 1 & 2 IMPROVEMENTS AND HIGHLIGHTS**

**RAIL CORRIDOR IMPROVEMENTS**  
Construct 37 Miles of New Track

- 1 PHASE 1**  
23 miles of new track
- 2 PHASE 2**  
14 miles of new track

**RAILROAD RIGHT-OF-WAY (ROW) AND TRACK ACQUISITION**  
Purchase of 384 Miles of Railroad ROW and 223 Miles of Track

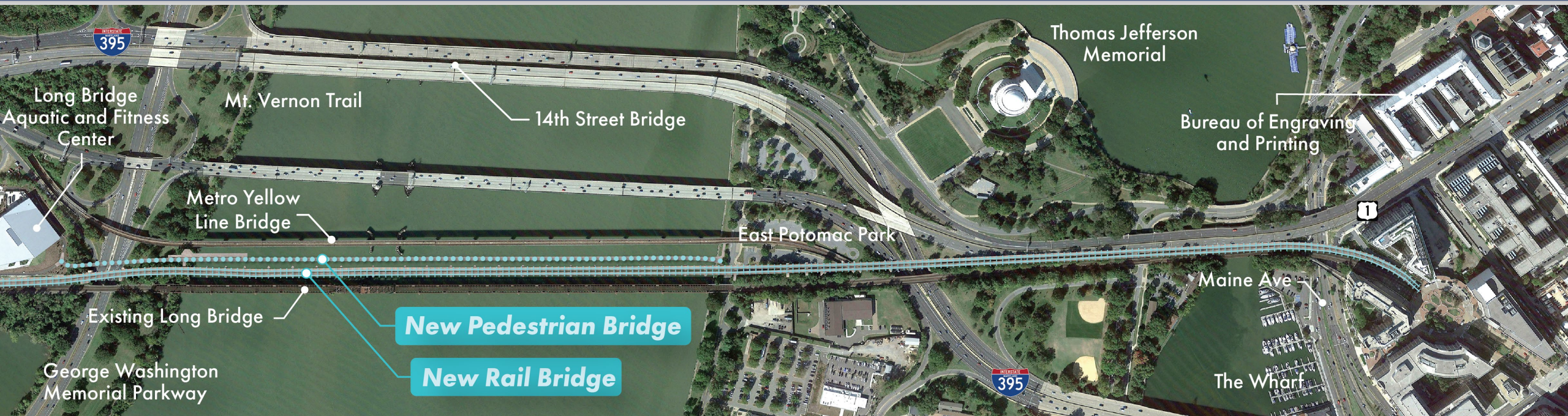
- SEGMENT 1**  
Half of CSXT ROW between Washington, DC and Petersburg, VA (145 miles), and 44 miles of track
- SEGMENT 2**  
All of CSXT ROW (abandoned rail line between Petersburg, VA and Ridgeway, NC [75 miles])
- SEGMENT 3**  
Nearly all of CSXT ROW between Doswell, VA and Clifton Forge, VA (164 miles), and 179 miles of track



**LEGEND**

- 1** PHASE 1
- 2** PHASE 2
- STATIONS
- RF&P RAILROAD TRACKS**
- Existing
- Projects

# Long Bridge Project Overview



- The existing two-track rail bridge is owned and operated by CSX. The bridge operates at 98% capacity with nearly 80 CSX, Amtrak, and VRE trains crossing it daily.
- The existing bridge will remain and continue to be owned/operated by CSX.
- The new Long Bridge will add two additional tracks, doubling rail capacity.
- The 1.8-mile project corridor, includes 5 rail bridges and 2 pedestrian bridges.

# Potomac River Bike-Ped Bridge

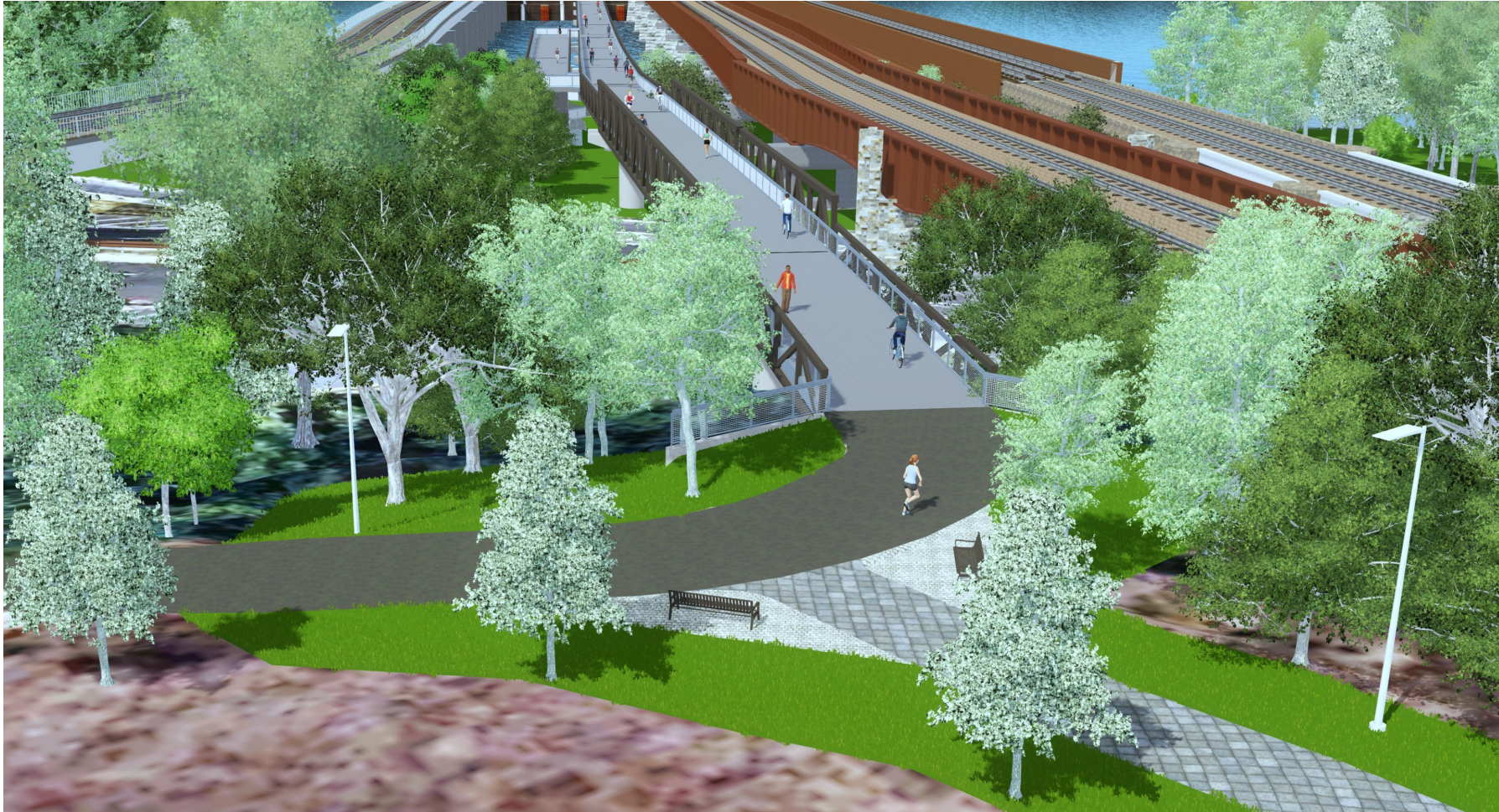
- Spans from Arlington's Long Bridge Aquatic Center/Mt. Vernon Trail to Ohio Drive in East Potomac Park
- 16-foot width
- Low profile and simple structure that blends with surrounding bridges
- Awarded \$20M RAISE grant





# Potomac River Bike-Ped Bridge

## Proposed Design- Long Bridge Park



# Potomac River Bike-Ped Bridge

## Proposed Design- Mount Vernon Trail



# Project Schedule

DDOT Led

## 2011–2016 Pre-NEPA

2011 FRA ARRA Grant

Phase I Study  
2012–2015

Phase II Study  
2015–2016

DDOT-DRPT Partnership  
through MOU

## 2016–2020 NEPA

2016 FRA TIGER Grant

FEIS/ROD Complete  
September 2020

Long Bridge Act  
December 2020

Identified Mitigation  
Commitments & Permit  
Identification

VPRA Led

## 2021–2023 Preliminary Engineering (PE)

Design 15% to 30%

Determine Project  
Delivery Method

Begin Environmental  
Mitigation & Permits

Agreements with  
Partner Organizations

## 2023–2030 Final Design & Construction

Design-Build or  
Alternative Project  
Delivery

Land Acquisition  
Activities

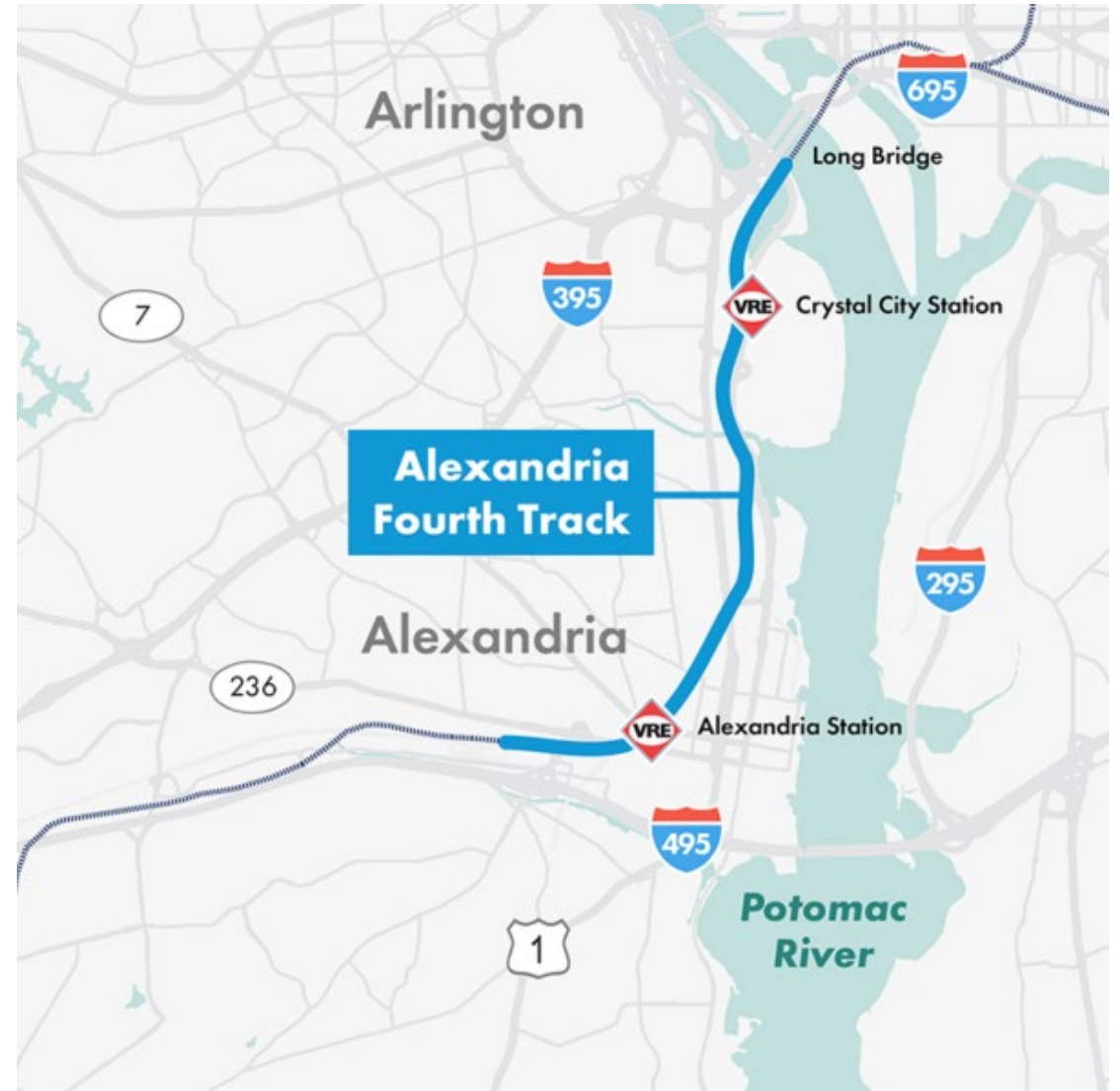
Permitting

Final Design &  
Construction



# Alexandria Fourth Track

- Construct six miles of new fourth main line track within the existing railroad right-of-way
- Limits are from the Potomac River to just west of Alexandria Station
- Connects to the southern end of the Long Bridge Project
- Close coordination with projects at Crystal City, Alexandria station and the replacement of rail bridges over King St and Commonwealth Ave
- Received \$45M FASTLANE grant from USDOT in 2016
- 100% design plans in process



# New Fourth Mainline Track (looking south)



The George Washington  
Masonic National Memorial

Existing Rail Track

Main Line Boulevard

Nelson Avenue

# New Fourth Mainline Track (looking south)



The George Washington Masonic National Memorial

Existing Rail Track

Main Line Boulevard

Nelson Avenue

Proposed Fourth Track

# Utility Relocation

## Does this project impact utilities?

- **Some utility relocation is required** to make way for track improvements
- Relocation allows for access to / maintenance of utilities in the future without disruption to rail operations
- The majority of this work will occur **within the existing railroad right-of-way**

## What will happen first?

- Relocation of existing fiber optic duct bank
  - Anticipated construction start = April 2024
  - Work to occur within the existing railroad right-of-way



# Project Benefits

Alexandria  
Fourth Track will:



Increase **capacity** to accommodate more passenger rail service and freight rail trains



Improve **reliability** of passenger, commuter, and freight rail services



Improving **efficiency** of passenger, commuter, and freight rail services by reducing the bottleneck along the existing corridor



# Alexandria Fourth Track: Public Outreach

## Fall 2023 :

- Pop-up: Crystal City
- Open House: Alexandria Station
- Presentation: National Landing BID
- Presentation: NL Transportation Roundtable
- Site Walk and Neighborhood Group Discussions

## Winter 2024:

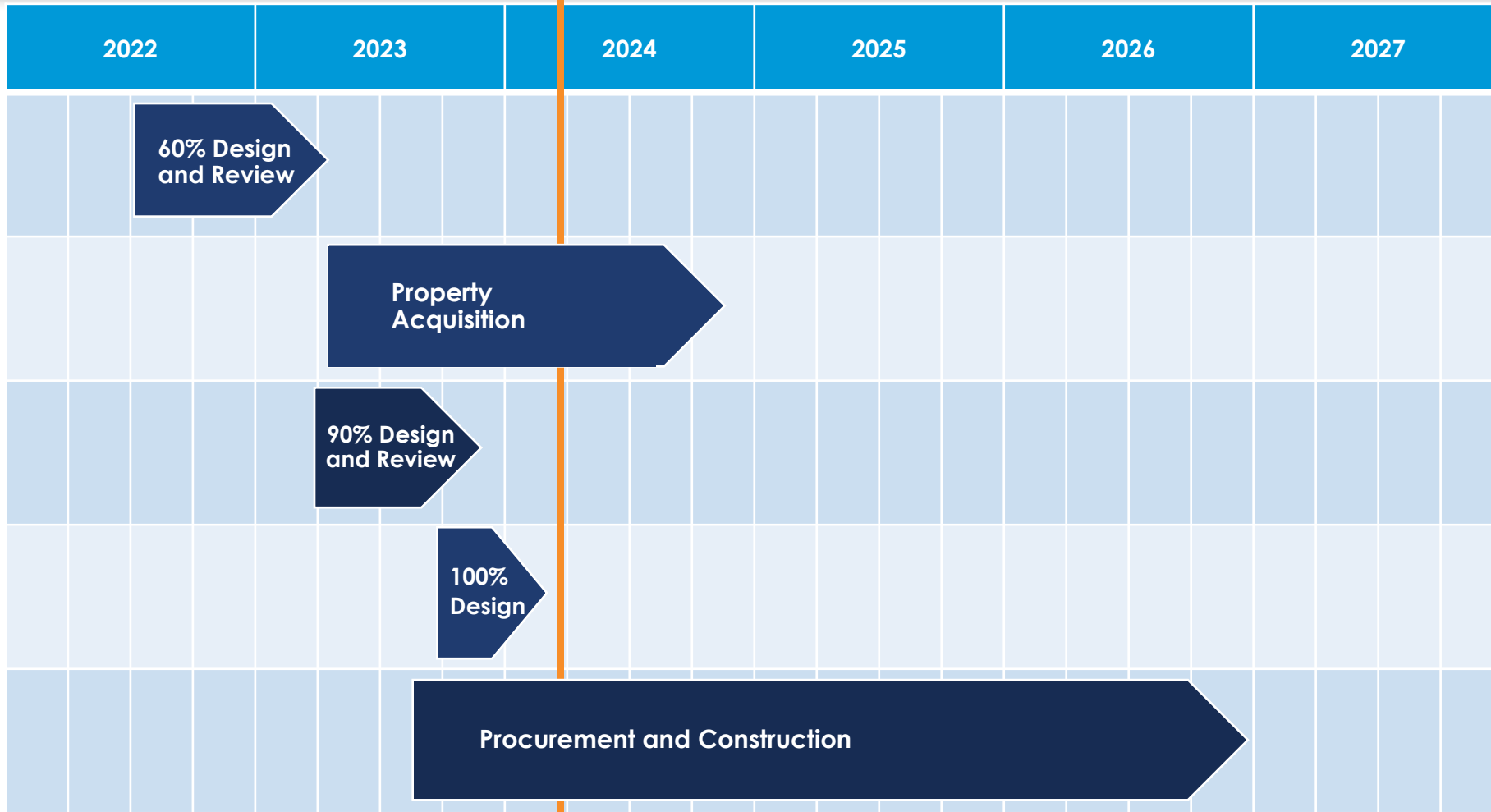
- Public Meeting, ROW Acquisition
- Presentation: Crystal City Civic Association (tonight)



**Ongoing coordination with Arlington County, City of Alexandria, and other stakeholder agencies.**



# Project Schedule

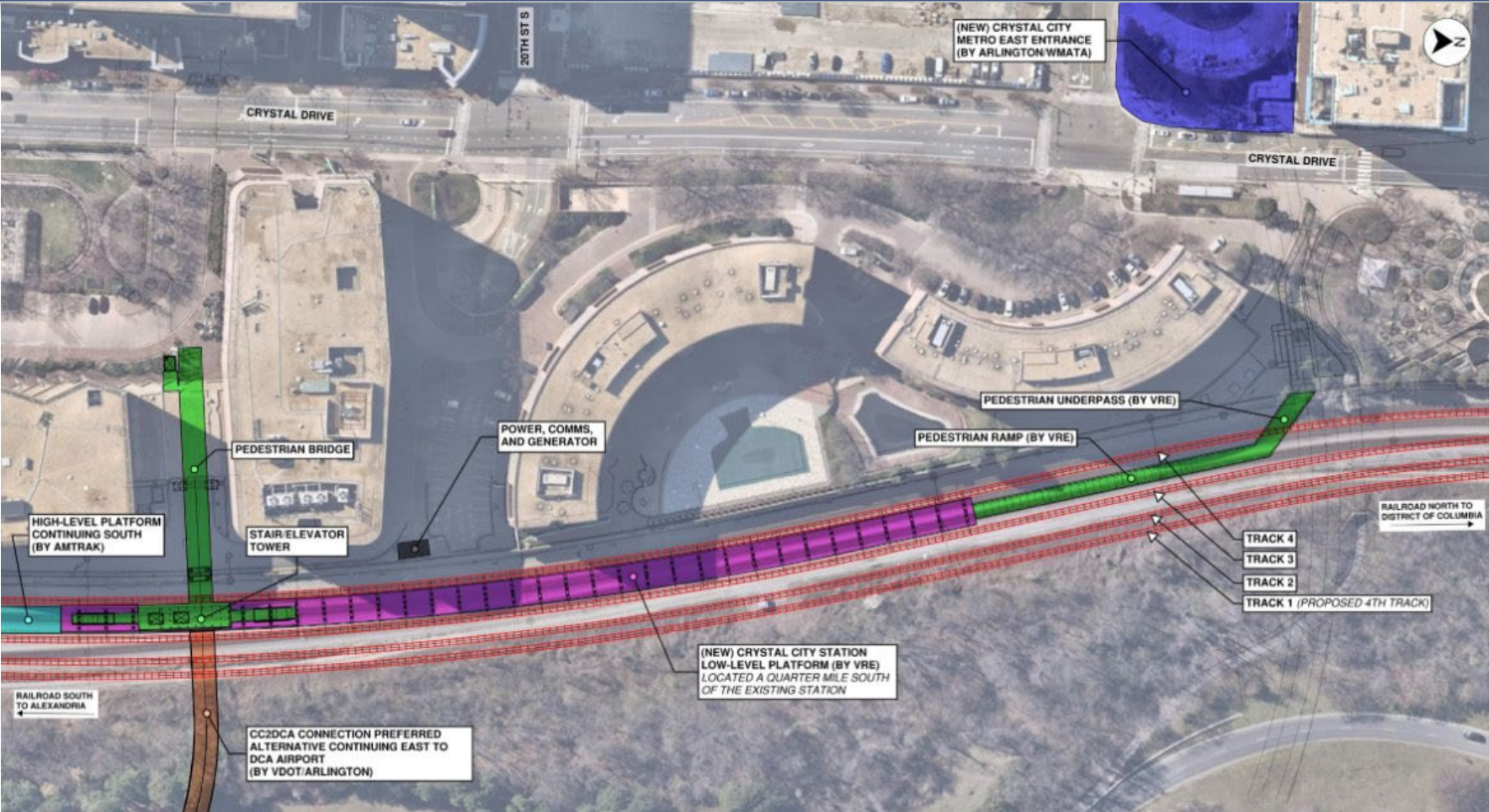


## Next Steps:

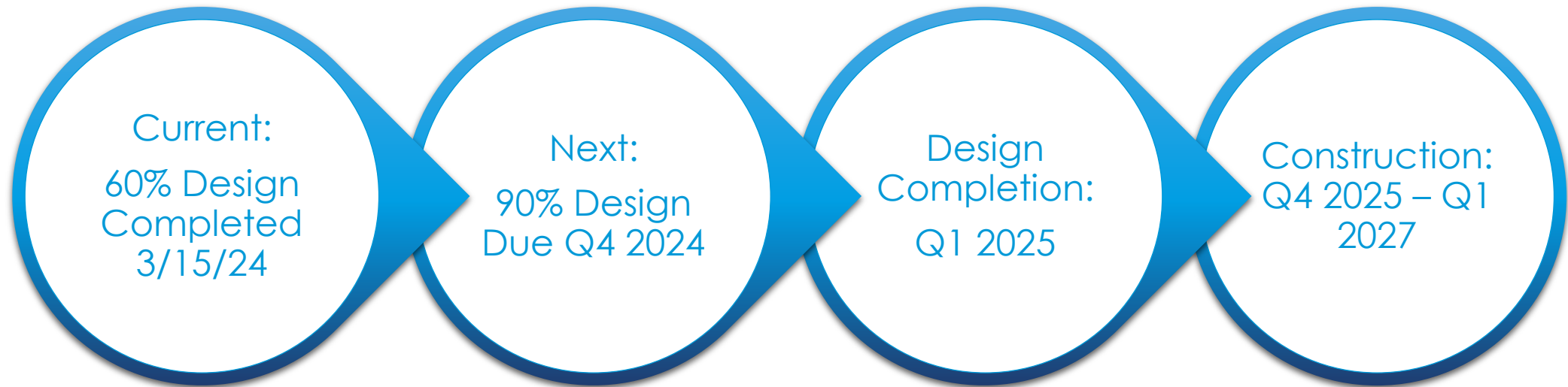
### Alexandria Fourth Track

- 100% Design currently in review
- Ongoing permitting activities
- Ongoing pre-construction activities

# Crystal City Station – Project Overview



# Crystal City Station – Project Timeline



Q&A



# Q: Is VPRA cutting down trees? Will you fill in area?

- The project team is clearing trees to prepare for fourth track construction.
- Only trees on the railroad property (within CSX right-of-way) are being removed.
- The tree removal activity will be finished by March 31.
- Advanced outreach to all property owners adjacent to the corridor.



# Q: Will VPRA plant trees after project completion?

- There are currently no plans to replant trees within the right-of-way.
- VPRA will continue to follow all required environmental and permit conditions to mitigate impacts.
- New trees will be planted as part of the VRE Crystal City Station Improvements Project (north entrance).

# Q: During what hours will construction occur?

- Work will follow the County noise ordinance limits.
- To be coordinated with selected contractor, VPRA, CSX, VRE, and County staff.
- Contractor selection will be in fall 2024.





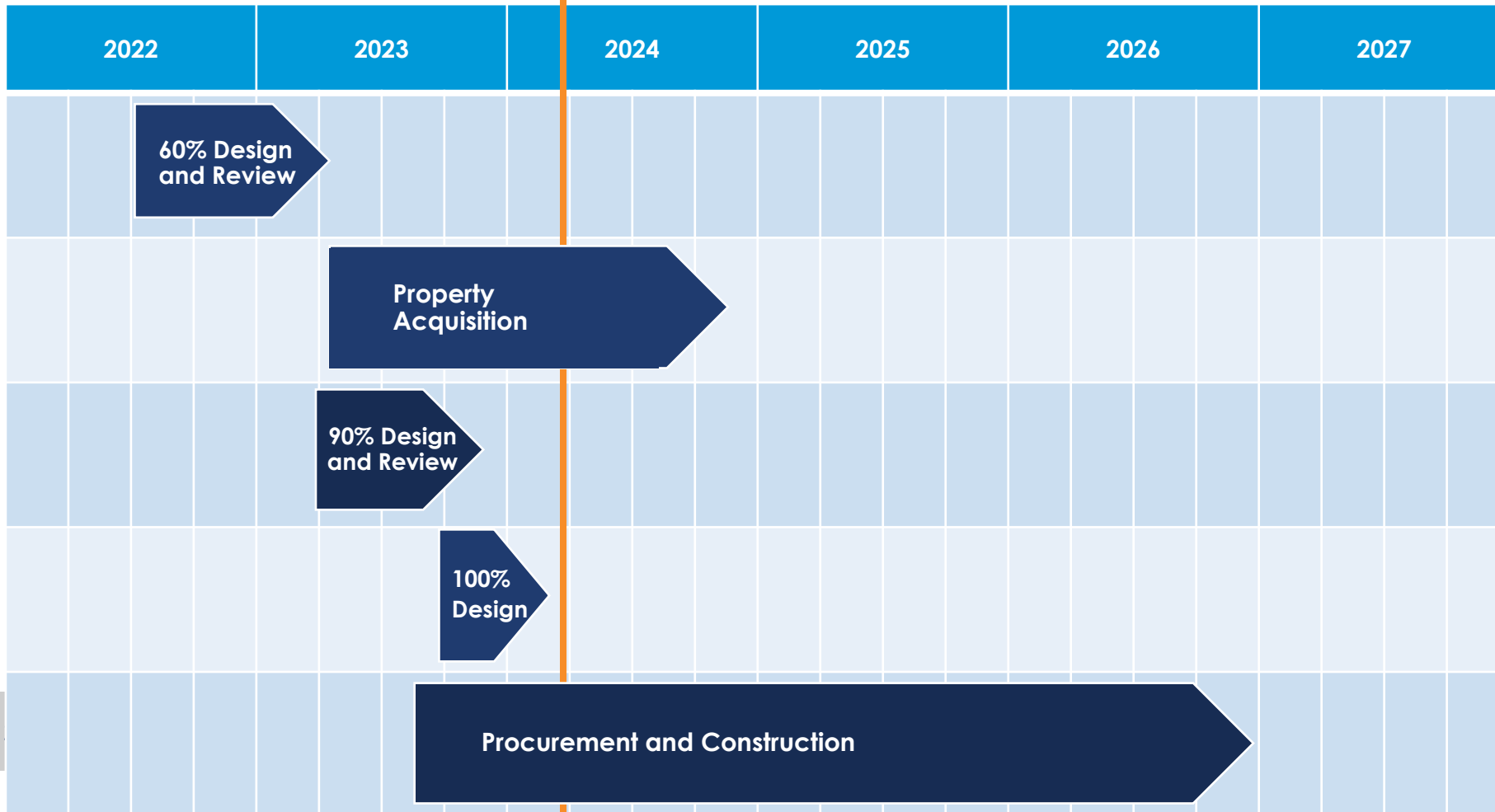
# Q: Will you have equipment stored in the area?

- Staging and storage will occur on CSX property (within the existing CSX right-of-way)



# Q: How long is the project?

- Substantial completion anticipated late 2026.
- Construction completion anticipated for early 2027.



## Alexandria Fourth Track

- 100% Design currently in review
- Ongoing permitting activities
- Ongoing pre-construction activities

Additional Questions?



# How to Stay Informed



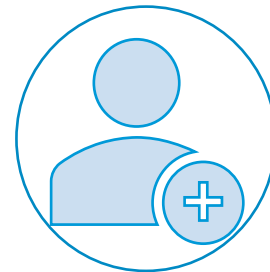
**Visit our website:**  
[VAPassengerRailAuthority.org](http://VAPassengerRailAuthority.org)






**Contact us:**  
**804-303-8700**  
**[contactus@vpra.virginia.gov](mailto:contactus@vpra.virginia.gov)**



**Sign up for email updates:**  
[vapassengerrailauthority.org/contact](http://vapassengerrailauthority.org/contact)



**Follow us on social media!**

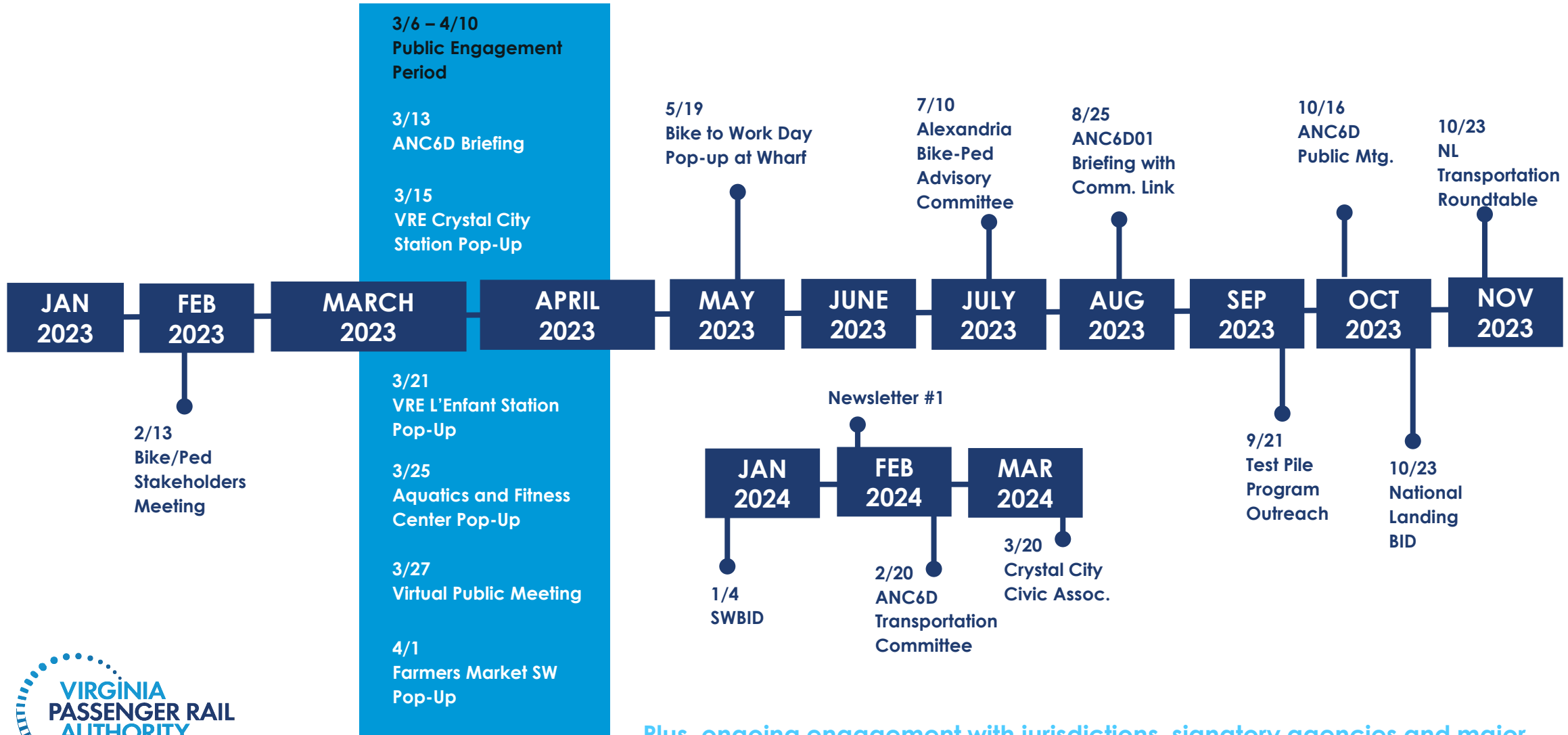
 [VAPassengerRail](https://www.facebook.com/VAPassengerRail)  
 [@VAPassengerRail](https://twitter.com/VAPassengerRail)  
 [@VAPassengerRail](https://www.instagram.com/VAPassengerRail)

 [Virginia-Passenger-Rail-Authority](https://www.linkedin.com/company/Virginia-Passenger-Rail-Authority)  
 [@VirginiaPassengerRailAuthority](https://www.youtube.com/VirginiaPassengerRailAuthority)

# Appendix Slides

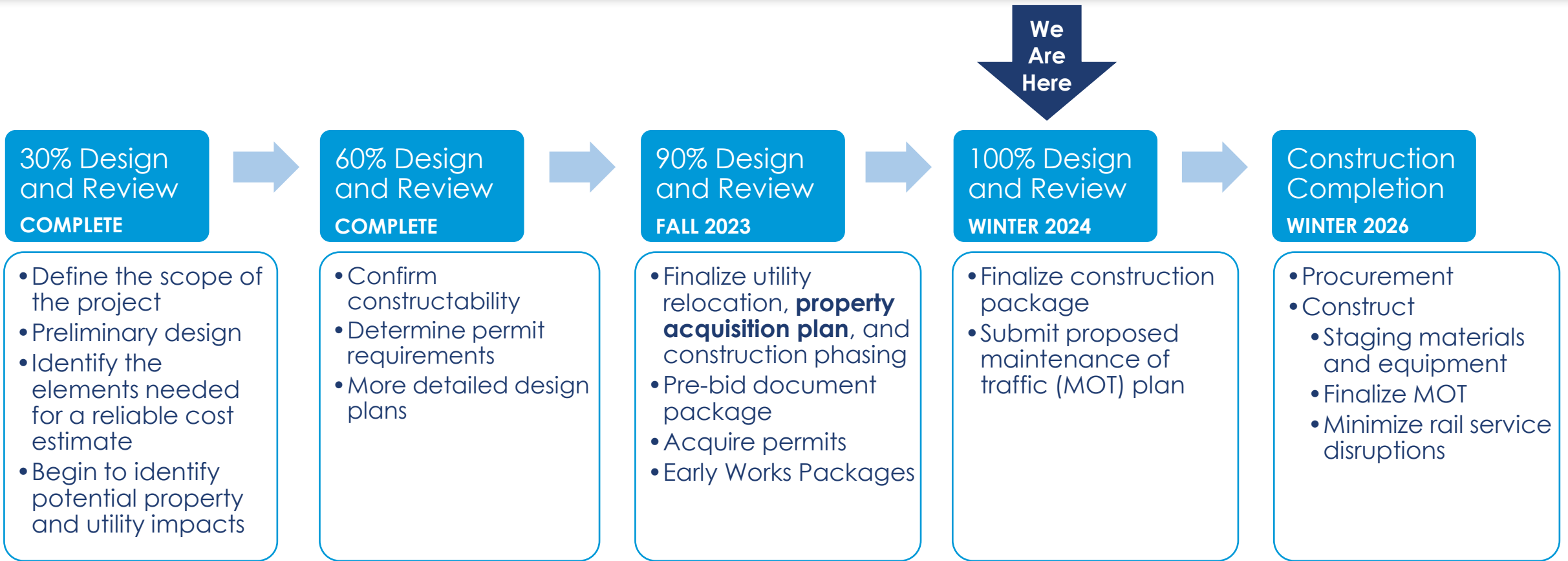


# Long Bridge Public Outreach Activities (2023-24)



Plus, ongoing engagement with jurisdictions, signatory agencies and major stakeholders.

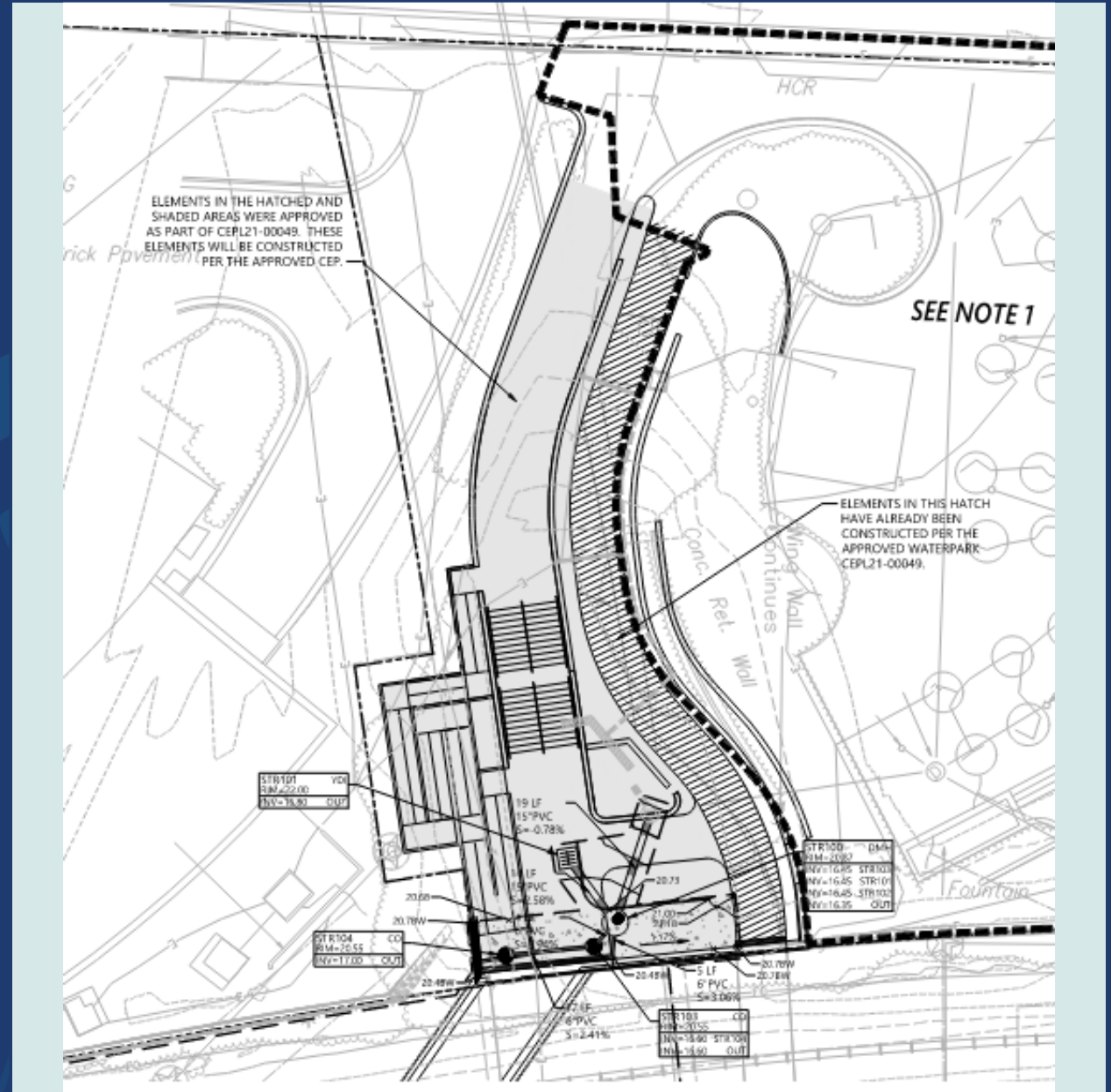
# VPRA Project Design and Construction Process



Ongoing communication with project partners, community leaders, residents, and travelers.

# Crystal City Station – North Entrance

- Entrance remains consistent with County Approved Site Plan from Water Park project
- Bicycle and pedestrian traffic are separated
- ADA accessible ramps are included





# Crystal City Station – South Entrance

- Stair and Elevators provided
- Shared Mezanine for VRE and Amtrak passengers
- Connecting bridge to 2011 Crystal Drive in design
- Coordination with CC2DCA Project Underway

