

CRYSTAL CITY INSIDER

The monthly newsletter of the Crystal City Civic Association



June 2025

Table of Contents:

	<i>Page</i>
1. PRESIDENT’S CORNER.....	2
2. CIVIC ASSOCIATION AND LIVABILITY 22202 ISSUES.....	3
3. TRANSPORTATION.....	4
4. INFORMATION AND EVENTS – ARLINGTON.....	9
5. DEVELOPMENT.....	13
6. PARKS & RECREATION.....	15
7. DOINGS IN CRYSTAL CITY (AND NEARBY).....	17
8. DINING IN CRYSTAL CITY (AND NEARBY).....	20
9. ABOUT THE CCC	21

PRESIDENT'S CORNER

TRAINS! Our May meeting was all about trains. We discussed the Long Bridge Project, the Fourth Track Project, and the new Crystal City VRE station. Our [website](#) has both the presentation and the video of the meeting. See page 4 of the newsletter for an article about the plans.

The Harris Teeter on Glebe Road is a major concern. Please visit our poll on the supermarket and the underground [here](#).

- Eric Cassel, CCCA President

What's on your mind? The *Insider* wants to hear from you

The *Insider* welcomes your contributions. You may have ideas for improving the neighborhood, reviews of local stores, tips about unsung local treasures, or just anecdotes about everyday life (like the stories in *The New York Times* [Metropolitan Diary](#)). Perhaps you'd like to write a column about how to redo the Underground or the plans for the CC2DCA connector? You may have a beef with parking enforcement or park maintenance. We would especially welcome suggestions to improve the newsletter – and your offer to cover a “beat” like restaurants or recreation. Send your articles and thoughts [here](#).

CIVIC ASSOCIATION AND LIVABILITY 22202 ISSUES

Noisy at night: Should the county get feedback on roadwork?

Arlington County does not allow companies to work at night, unless the project is a county road. Unfortunately, the county has approved night work not only for Army Navy Drive, but also for 12th Street. We do not have any process to review these permits before they are approved. As a result, the civic association is working on a memo to the county complaining about these projects.

The county has closed 12th Street, yet it is still planning more than a month's work at night. The idea of paving Army Navy at night at least has some plausible support, but we can see zero necessity for night work on a closed street.

For more details on 12th Street, see: [Transitway Extension to Pentagon City – Official Website of Arlington County Virginia Government](#).

For more details about Army Navy Drive see: [Army Navy Drive Complete Street – Official Website of Arlington County Virginia Government](#).

TRANSPORTATION

Transforming rail in Crystal City: Planners map out 5-year plan

The Crystal City Civic Association (CCCA) hosted its May 2025 meeting, spotlighting transformative rail projects shaping our region’s transportation future. A team of five experts presented updates on three pivotal initiatives: the Long Bridge Project, the Alexandria 4th Track Project, and the VRE Crystal City Station Project, with the CC2DCA pedestrian bridge project hinging on the station’s completion. Below are highlights from the discussion. For more details, view the full presentation and meeting recording on the [CCCA website](#).

Long Bridge Project: expanding capacity across the Potomac

Project Overview



1.8 mile Project	20,000 Feet of Track
6,500 ft Rail Bridges	3 Rail Operators
2,800 ft Potomac River Bike -Pedestrian Bridge	2 New Tracks VA to DC
3,500 ft Retaining/ Crashwalls	5 New Rail Bridges
70 Daily Trains	1 New Potomac River Bike/Ped Bridge
37 + Stakeholders	1 Maine Ave Pedestrian Bridge

Naomi Klein, representing the Virginia Passenger Rail Authority, outlined the \$2.4 billion Long Bridge Project, which includes a new two-track rail bridge and a dedicated pedestrian and bike bridge over the Potomac River. Set for completion by 2030, the project will enhance rail capacity along the East Coast. Construction begins in spring 2026, with cranes visible by mid-2026. To minimize traffic impacts, materials will be floated to the site, with staging in East Potomac Park parking lots and grassy areas. While the CSX railroad will own the DC bridges, a perpetual easement ensures passenger rail access to two tracks.

www.crystalcitycivic.org

www.facebook.com/crystalcitycivic

Alexandria 4th Track Project: boosting regional connectivity

- Approximately six miles of new track between Long Bridge and Alexandria VRE Station
- Adds a fourth track within existing right-of-way between Arlington and Alexandria
- Increases rail capacity and addresses current bottleneck that delays passenger and freight trains traveling north into DC, where five tracks converge into three
- Construction to begin Q4 2025



Adeel Mysorewala presented the Alexandria 4th Track Project, extending from Long Bridge to Telegraph Road. Construction starts late this year and is slated to be finished by 2030. To minimize disruption, work will occur primarily on weekdays from 7 a.m. to 5 p.m., with limited night operations. This project will separate freight from passenger rail traffic, broadening capacity for both.

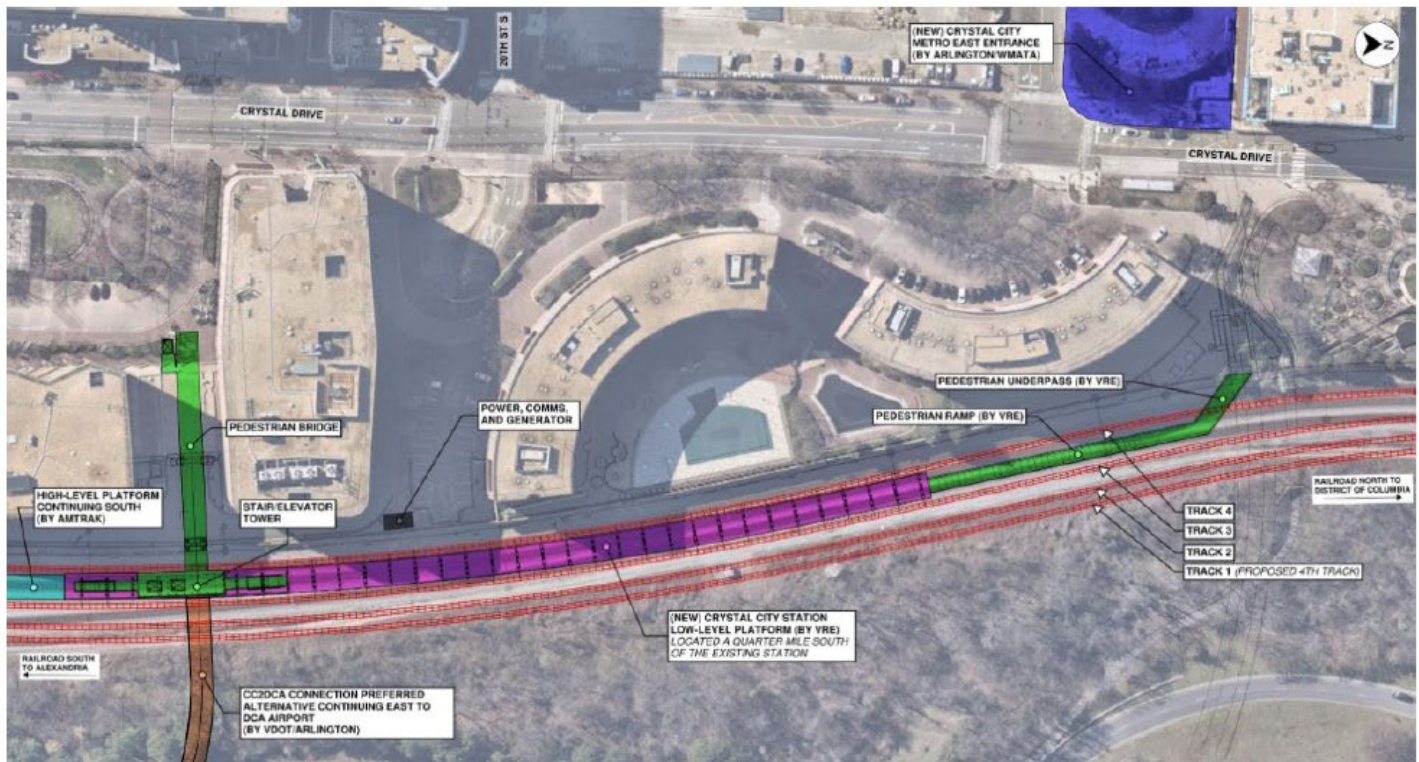
The Fourth Track Project spans a six-mile corridor from Long Bridge to Alexandria. Phase 1, starting in 2025, focuses on track work and utility adjustments, followed by Phase 2 in early 2027 to prepare for a new VRE station. To keep residents informed, the team will launch a dedicated website with an interactive map and establish a community advisory group to address concerns about safety and noise.

VRE Crystal City Station & CC2DCA pedestrian bridge: a new hub

The VRE Crystal City Station Project, discussed by the team, features a covered island platform and two boarding edges for improved efficiency. A new south-side entrance at the Water Park and a pedestrian bridge connecting to JBG Smith-owned buildings are planned, with construction starting in early 2027, contingent on progress on the Alexandria 4th Track Project. Coordination among Amtrak, Arlington County, and JBG Smith is crucial to the project's success. Amtrak is expected to have its own higher platform just to the south of the commuter rail platform.

www.crystalcitycivic.org

www.facebook.com/crystalcitycivic



The new station: The two tracks closest to the building will be for passenger rail, with a covered platform between them. The VRE commuter rail station is shown in purple. The Amtrak platform lies to its south (left on the map) and is shown in turquoise. The CC2DCA bridge comes in from the east (in orange below), connects with the rail station, and then ramps down to Crystal Drive near the Surreal Restaurant and 21st Street South.

To address community concerns, vibration monitoring will be included in the construction contract, particularly for a retaining wall near a swimming pool. Work will adhere to Arlington County noise ordinances, with daytime operations (Monday–Friday) and limited weekend activity. Pending JBG Smith approval, staging areas will include a triangular lot near 26th Street and a parcel accessible by a tunnel under the tracks.

The CC2DCA will intersect the station between the VRE station and the Amtrak station. Thus, you can use either entrance to the train station to get to the CC2DCA bridge. Note that the north entrance is next to the Mount Vernon Trail entrance and the south entrance will be over JBG Smith buildings, right by the Surreal restaurant.

Lastly, there is a major bus stop right by the Mount Vernon Trail/VRE entrance. Thus, the corner of 18th and Crystal Drive will have bus service, a Metro entrance, a VRE entrance, an Amtrak entrance, a bike path to the Mount Vernon Trail, and a bridge to DCA.

For more details, view the full presentation and meeting recording on the [CCCA website](https://www.ccca.org/).

Work starts in late summer on realigning 15th Street South



Plans call for 15th Street South to be reconfigured from the Route 1 underpass south to Crystal Drive. The grass median strips will be removed so that eastbound traffic can be shifted to the south. In addition, Clark Street will be realigned to connect directly with Bell.

Prepare yourself for major roadwork along 15th Street from the underpass at Richmond Highway (Route 1) to Crystal Drive. The project is due to begin in late summer and will be completed in two years.

When all is done, 15th Street will be shifted south and its grass median removed. The number of lanes will remain the same. South Clark Street, which currently bends east in front of the Crown Plaza, will be brought in alignment with South Bell Street on the other side of 15th Street. The new intersection will have a traffic light that will be coordinated with the existing lights just to the west at the Route 1 ramps.

Why is the county going to all this trouble?

First, narrowing the footprint of 15th Street and eliminating the bend in Clark will make space for a new county park. Still under design, the park will be bordered by Clark Street on the west, Crystal Drive on the east, 15th Street on the south, and a new service road next to the Crowne Plaza on the north.

Second, straightening the Clark-Bell intersection will allow for a bike trail to run between 12th and 18th streets and eventually beyond to the north and south. The dedicated multi-use path, which will also include a lane for pedestrians, will run along the west side of Clark-Bell, with various barriers providing protection from vehicular traffic.

The county vows to keep traffic flowing despite the construction, making use of the existing median on 15th street for temporary lanes. However, at times there could be slowdowns and brief closures.

www.crystalcitycivic.org

www.facebook.com/crystalcitycivic

“It's going to be 24 months of hard work by our people out there and by our folks in the office coordinating,” said Olivia Daniszewski, project manager for the county.

Daniszewski added that the project would be completed in stages. While stressing that the timetable is not fixed, she suggested that the Clark-Bell connection could be finished at the 12-month mark and the multi-use trail after 15 months. Once all the roadwork is completed, work on the park could commence.



Preliminary plan shows park north of an undivided 15th Street South. Note, too, the multi-use path in green to run along Clark-Bell.

The 15th Street project should have no effect on the Underground hallways that pass below 15th Street, Daniszewski said.

She also noted that the project is independent of long-run plans to bring Route 1 down to grade level – a major endeavor that has yet to be fully funded and remains far from certain.

No timeline has been set for the park, according to Max Ewart, an association planner with the Arlington parks department. Ewart said the initial park would be temporary in anticipation of the eventual redevelopment of the Crowne Plaza Hotel. The [Crystal City Sector Plan](#) (page 80) envisions that the permanent park would be 33,000 square feet and 80-feet wide – “ample room to create a

lush experience of flower gardens featuring seasonally colored trees and flowers, including some grand trees at the heart of the space.” With paved walkways, benches, and perhaps a central water feature, the park would provide workers and residents alike an urban retreat. The public will be consulted throughout the design process, Ewart said.

INFORMATION AND EVENTS – ARLINGTON

Democrats to hold primary on June 17

Candidates for offices ranging from the County Board to lieutenant governor are on the ballot for the June 17 Democratic primary.

Here are the candidates:

- Lieutenant governor: Levar Marcus Stoney, Babur B. Lateef, Aaron R. Rouse, Victor R. Salgado, Ghazala F. Hashmi, and Alexander J. Bastani.
- Attorney general: Shannon L. Taylor and Jay C. Jones.
- County Board: James A. DeVita and Takis P. Karantonis (incumbent).

Only contested races are on the ballot. The last day to apply for a mail ballot is June 6, and the last day of early voting is June 14. For details on the election, visit [here](#).

Historical society reopens museum, plans more events

Now's your chance to ring the bell at a school that dates from the 1800s. The Arlington Historical Society reopened its museum last month since closing last summer for renovations of its home, the former Hume School.

The building's second story is now open to the public; that's where you can tug on a rope to ring the school's bell. Society president David Pearson told [ARLnow](#) that the museum aims to host interactive history-themed activities to encourage visitors to return multiple times a year. In addition to restoring 47 original windows, the renovation project spruced up exhibits, which cover the area's history from Native American times through the colonial period and Civil War to the dramatic changes during the last century.

The society is now focused on two celebrations next year, its own 70th anniversary and the nation's 250th anniversary. The museum, 1805 S. Arlington Ridge Road, is open weekends from 1 to 4 p.m. For details, visit [here](#).



www.crystalcitycivic.org

www.facebook.com/crystalcitycivic



Union Army comes to Fort CF Smith

Have your photo snapped by Matthew Brady when the Union Army sets up camp at Fort CF Smith Park on June 8 from noon to 4 p.m. Besides portraying the famed Civil War photographer, re-enactors will perform drills. The Arlington Historical Society will show artifacts and offer talks about what it was like to be among the thousands of soldiers stationed in Arlington to guard the nation's capital. Visitors will be able to tour the fort, which is considered one of the best preserved in the Washington area. It was named in honor of Major General Charles Ferguson Smith after he died in battle. For details on the special day, visit [here](#).

Matthew Brady, portrayed by Arlington Historical Society president Peter Vaselopoulos

County looks to state as federal cutbacks in safety net loom

Arlington County expects it will need increased help from the state in the wake of federal cuts to Medicaid, food assistance, and other safety net programs.

"Virginia is in a better position than most, but the idea that [the state government] has a vault of a significant amount of funds? Don't rely on that," Del. Alfonso Lopez (D-3) told county leaders at a May 19 meeting, according to [ARLnow](#).

The county receives more than \$40 million in federal human services funding. Major cuts could "do widespread damage," said Anita Friedman, director of the county's Department of Human Services. Since before the pandemic, demand for safety net programs has jumped:

- Medicaid enrollment is up 55 percent, to 29,307 residents.
- SNAP (food stamp) enrollment is up 61 percent to 5,600 households.
- WIC (Women, Infants, Children) enrollment for low-income families with children under 5 is up 41 percent to 2,800 households.

E-CARE accepts old electronics, hazardous materials (and bikes, too)

Looking to clear out old electronics and hazardous household materials? The county's postponed [Spring E-CARE](#) event will take place at the start of summer, June 21, 7:30 a.m. to 2 p.m. (rain or shine) at Washington-Liberty High School, 1425 N. Quincy St. Accepted materials include automotive fluids, batteries, fluorescent light bulbs, paint products, and smoke detectors. For this event, E-CARE will accept bicycles, which will be donated to the nonprofit [Bikes for the World](#). E-CARE is open to county residents only, so visitors should bring an ID. For details on acceptable and unacceptable materials, visit [here](#).

Emergency services upgrade response system to 911 calls

Arlington County is upgrading training of 911 responders as it enhances how it handles emergency medical, fire, and police calls. The county is adopting the [Priority Dispatch System \(PDS\)](#), which provides for:

- **Improved Response Efficiency** Emergency responders receive critical information faster and more accurately.
- **Consistent Call Handling** All callers receive the same high standard of care, regardless of the situation or dispatcher.
- **Life-Saving Pre-Arrival Instructions** Dispatchers can provide medically approved guidance over the phone before first responders arrive, including CPR, bleeding control, and childbirth support.
- **Better Resource Management** Calls are prioritized based on severity, helping reduce strain on emergency services and ensuring critical incidents get the fastest response.

The new system will be fully implemented by July. The county handles more than 80,000 emergency calls a year.



Laid off and feeling low? How about fostering a pet?

A local animal rescue organization is looking to lift the spirits of former federal workers while benefiting homeless pets. Lucy Dog Animal Rescue, based on Langston Boulevard, will provide all the supplies necessary for laid-off government workers to foster a cat or dog. For more information, visit [here](#).

Public comment sought to help shape Arlington's future

Arlington wants to hear your thoughts on what's working well in the county and what can be improved as it updates its long-range Comprehensive Plan. Learn more [here](#). Deadline for comments is June 30. Subscribe [here](#) for planning and building updates.

www.crystalcitycivic.org

www.facebook.com/crystalcitycivic

Exhibit explores the extraordinary behind the ordinary

This article was submitted by Samantha Barnett, a volunteer with Arlington County libraries.

In every home, there are ordinary objects that hold extraordinary meaning. What might seem like just a teapot, a worn T-shirt, or a simple handkerchief can hold a deep meaning and spark memories.

At Aurora Hills Library, I invite the community to explore these powerful connections through an exhibit of everyday treasures. Each item tells a story – of where we come from, of moments that shaped us, or of the people we hold dear.

The exhibit will be on display June 21 through August 16 in the glass cases in the library lobby. The deadline is June 7 to submit objects. A reception will be held at the library on August 16, when they can be picked up.

I have two examples of my own. The first is a wooden pipe that my dad gave my husband the night before our wedding. This pipe, passed down from my grandfather, serves as a reminder of family heritage. It was my dad's way of saying, "Welcome to the family," and it highlights the importance of tradition in bringing loved ones together.



From author's collection: a pipe handed down from father to son-in-law and a keychain that evokes memories of grandma.



The second object is a Little Green Sprout keychain that I carry daily. I inherited it after my Oma passed away. As a child, I would playfully debate with her whether the tchotchke was a "banana boy" or "pea boy." Now it brings back joyful memories of our time together.

I was inspired to mount the exhibit by the novel "[The Museum of Ordinary People](#)" that author Mike Gayle says was inspired by an abandoned box of mementos.

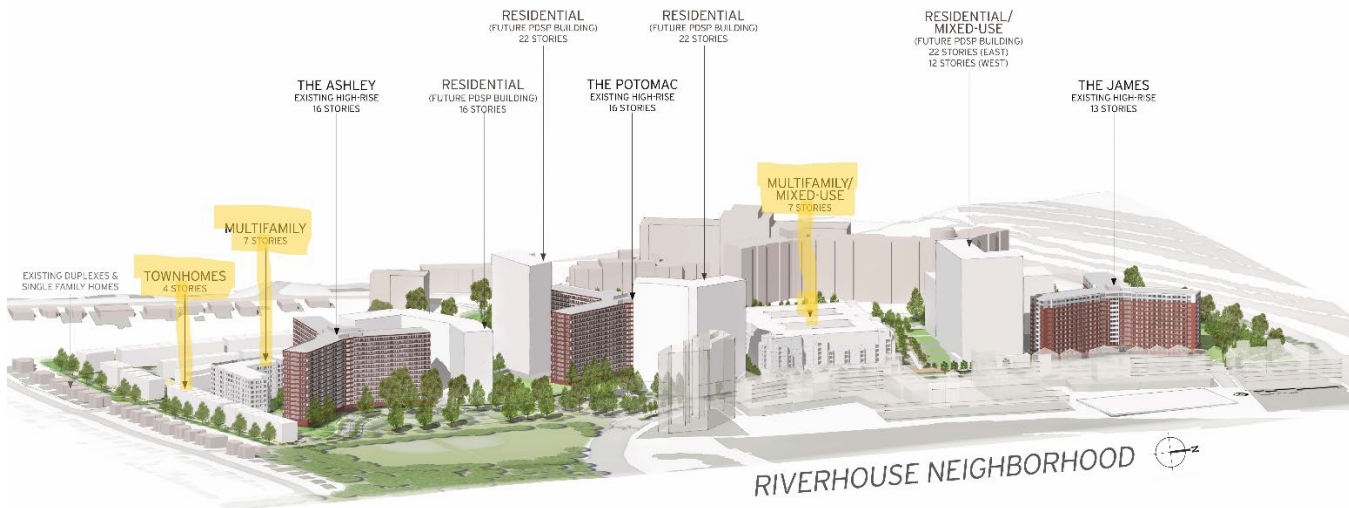
If you are interested in submitting an object to be a part of this exhibit, visit [here](#). For more information, visit [here](#).

www.crystalcitycivic.org

www.facebook.com/crystalcitycivic

DEVELOPMENT

Residents review latest revisions to RiverHouse project



The first phase of the RiverHouse project would add the three buildings highlighted in orange, The existing apartment buildings– the Ashley, the Potomac, and the James– would remain.

Residents weighed in on JBG Smith’s updated plans for redeveloping the RiverHouse site, raising objections to some of the changes that the developer made at the request of county planners.

The county wanted additional open space while maximizing potential density. JBGS had already planned to increase the number of units from 2,605 to 3,191; the county wants to see a number closer to 5,427, the Pentagon Sector Plan limit. The revised plan calls for taller buildings, which would block some views from Arlington Ridge.

The 36-acre site is in Pentagon City, bounded by Army Navy Drive to the north, South Joyce Street to the east, 16th Street South to the south, and South Lynn Street to the west. It is currently home to three large residential buildings, which would remain.

The first phase of the site build-out includes a new seven-story multifamily building with ground floor retail, possibly an urgent-care facility (N1); a seven-story multifamily building (C1), and a four-story building with stacked townhouses. The first phase would add a total of 738 units, based on figures on the [county website](#). All would be rental.

At last month’s Site Plan Review Committee, residents criticized the massive HVAC units on the roof of the N1 multiuse building, citing noise and pollution concerns. Both residents and planning commission members expressed concerns about the townhouse buildings, citing garage and driveway placement; trash pickup; and road design on the south side, which abuts a single-family home neighborhood.

Commission members suggested a more dynamic design for the façade of the C1 seven-story residential building.

The developer is working with county staff on affordable housing. The benchmark is 10 percent of net new units, for bonus density. Current plans only call for affordable units in the residential buildings, not the townhome buildings.

Later phases of the project call for two buildings of up to 22-stories in height, which continue to draw criticism from Arlington Ridge residents. They cited view obstruction and the impact on property values.

The next Site Plan Review Committee is June 26. Project details are [here](#).

PARKS & RECREATION

Arlington parks hang on to spot in top 10 of national ranking

Arlington County parks still rank among the top 10 in the nation but have slipped from fifth to seventh place. They now rank between San Francisco and Seattle, according to the annual ParkScore list issued by the Trust for Public Land, Washington, D.C., continued as No. 1, but its position could be threatened by federal cutbacks. These cutbacks could also affect Arlington's status, as the rankings include national parks. Arlington spends \$301 per resident on parks, compared with a nationwide city average of \$133 per resident, according to ParkScore data. More telling is that 99 percent of Arlington residents live within a 10-minute walk from a park, compared with the national average of 76 percent.

In National Landing, Arlington Junction Park is expected to open by early next year on a tear-drop shaped parcel at South Eads Street and Army Navy Drive.



Design for Arlington Junction Park on South Eads.

Parks panel considers forming community foundation

Arlington officials are looking into following Fairfax County's lead by establishing a community foundation to augment funding for local park facilities and programs. "I think we should keep noodling on it," Jill Barker, Park and Recreation Commission chair, said at its May 13 meeting, according to [ARLnow](#). Arlington County increased funding by 2.2 percent to \$65 million for the new fiscal year. Of that \$18 million is expected to be covered by user fees.

Boat launch slated to open in June at Four Mile Run Park

It's not Arlington, but it is close to us. We pass Four Mile Run Park as we drive down Glebe Road, Arlington Ridge Road, or Mt. Vernon Avenue. A canoe and kayak launch will make Four Mile Run and the Potomac River accessible to paddlers of all abilities. The Four Mile Run Conservatory Foundation has been contracted to build it between March and June this year. For details, visit [here](#).

Art, fitness, social events featured in 55+ Guide

Explore the [Summer 55+ Guide](#) for programs including art classes, fitness programs, and social events. Activities include a lecture explaining AI, a board game night, and a workshop on preparing your garden for fall. Programs begin in June, but check the [55+ Guide](#) for specific start dates.

Wondering where to walk or cycle? Download a map

The county is offering detailed brochures for pedestrians and walkers: the [BikeArlington](#) Bicycle Comfort Level Map and WalkArlington's [Walkabout Maps](#), which features 22 self-guided walks around the County.

DOINGS IN CRYSTAL CITY (AND NEARBY)

Columbia Pike will be hopping with region's biggest blues festival

The Columbia Pike Blues Festival, billed as the metro area's largest such music event, returns for its 28th year, June 14, 1-8 p.m. The free festival will stretch along the pike from South Walter Reed Drive to 9th Street S.

Music begins at 1 p.m. with Arlington's Rick Franklin performing Piedmont Blues. Other performers include Sol Roots Band, Anthony "Swamp Dog" Clark, and Little Red & the Renegades. Everyday Everybody, a Washington-based funk, soul, jazz, and Afrobeats band, will wrap up the day at 6:30 p.m.

Other attractions include moon bounces and face painting for kids, food vendors, and artisans. More details [here](#).



Rick Franklin will lead off the fest.

Public meets private innovation at GovTech 2025

The State of GovTech 2025 unites leading lights in local government innovation — startups, tech leaders, investors, NGOs, academics, and government. More than 20 startup entrepreneurs will deliver fast-paced pitches with expert public and private sector judges and awards. The event takes place on June 17-18, at Amazon HQ2 Merlin Building, 545 15th Street S. For details and registration, visit [here](#).

Series offers art lessons, drinks, music, and more at Water Park



The Water Park on Crystal Drive hosts the "[Paint & Sip](#)" series every Sunday in June, 6-8 p.m. Besides instructor-led painting sessions (canvas and art supplies provided), the event will include music, food vendors, lawn games, and an array of drink offerings. Dress up in a costume that reflects the theme of the night and compete for prizes. Tickets are \$33.77. Here is the lineup:

June 1: Painting with coffee as a pigment

June 8: Pet's Best Friend

June 15: Gone Fishin' (Father's Day Edition). Paintings on canvas or glass mugs.

June 22: Morning Sail

June 29: Life's a Beach

Visit [here](#) to purchase tickets and learn more details.

www.crystalcitycivic.org

www.facebook.com/crystalcitycivic

MoCA on the Move brings art and music to Met Park

[MoCA on the Move](#) hosts free family events Sundays, 10 a.m.-1 p.m., at the central green of Metropolitan Park. Sponsored by the Museum of Contemporary Art Arlington, the spring series features live music, light snacks, and art-making activities. Here is the lineup for the next month:

June 1 Collaborative Pride Parade hearts and personalized bandanas. Music: [Rook Richards](#)

June 8: DIY Stamps and Prints. Plus, [Arlington Art Truck](#) presents *Exposing Life Cycles* with artist [Zofie King](#) with Michele Montalbano. Music: [Laurel Halsey](#)

June 15: [Allie Tripp with Block Print Bike](#) Postcard Prints; Star Wand Decoration with Scott Ricker. Plus, games to play with Dad! // Scott Ricker

Buy tickets [here](#). In case of rain, the program will be held indoors, at MoCA Arlington's Innovation Studio + Store, 525 14th S, South Arlington.



The Arlington Art truck pulls in on June 8.

Thursday nights at Met Park features jazz, art, and snacks

Met Park hosts a free jazz concert series Thursday from May 8 to June 12, 4:30-6:30 p.m. Onsite vendors include Good Company and Toby's Ice Cream. Sit on a park bench or bring your own blanket and chair. The Museum of Contemporary Art Arlington offers a free art activity. Here is the jazz lineup:

June 5: [Subterraneo](#) (Cuban Son). Art: Personalize a fan.

June 12: [Carr Keys](#) (Straight Ahead Soul). Art: [Danni O'Brien](#)'s "Spring has Sprung: Printmaking with Plants"

Dress in theme for Water Park concert series

The Friday night [Concert Series at Water Park](#) features food vendors, lawn games, and an array of beverage options, 6-8:30 p.m.. Costume contests will be held each week to see who best reflects the night's themes. Here is what's coming up:

June 6: [Erin Harpe](#) (Theme: Bring your Pet)

June 8: [DWQ Jazz Band](#) (Theme: Jazz Night)

June 13: [Emma G](#) (Theme: 80s, 90s, 2000s)

June 20: [Awen Family Band](#) (World Boogie Collective) (Theme: Americana)

June 27: [Retropop](#) (Theme: Grand Finale)

www.crystalcitycivic.org

www.facebook.com/crystalcitycivic

Tune up your body Mondays at Water Park

[DC Fray](#) offers free, instructor-led fitness classes Mondays, 6-7 p.m., from June 9 through July 29. No experience required. Attend multiple classes to be eligible for prizes; details [here](#). Bring your own towels, water, snacks, and mats. Here's the lineup:

June 9: Flow Class by Mind Your Body Oasis

June 16 Barre by Barre Unbound

June 23: Vinyasa Yoga by Mind Your Body Oasis

June 30: Slow Flow by Mind Your Body Oasis

July 7: Pilates by Mind Your Body Oasis

Farmers market back Tuesdays and Saturdays

The twice-weekly farmers market is back at Met Park, 1400 South Eads St., through October. Some 50 vendors offer goods including fresh fruits, vegetables, artisanal breads, teas, baked goods, and more. Produced by [Eat Loco](#), the farmers market is held Tuesdays, 10 a.m.-2 p.m., and Saturdays, 9 a.m. to 1 p.m. Besides stocking up on goodies, visitors can connect with local farmers and artisans, learning the stories behind their creations. Find the updated weekly layout of the Saturday market [here](#) and of the Tuesday market [here](#).

For more activities, visit ...

- **Events at National Landing**
- **Arlington Parks and Recreation**
- **Arlington arts events**
- **Arlington Convention and Visitors Services**
- **Events for Kids** Library activities including Family Game Night, Take & Make Crafts, and Sensory Story Time.

DINING IN CRYSTAL CITY (AND NEARBY)

French-Chinese restaurant opens in Grace and Reva

A Chinese fusion restaurant and bar opened last month at 244 19th Court S.#105, on the ground floor of the Grace and Reva apartments. Bar Chinois is the restaurant's second location in the metro area. Its cocktail menu features 11 drinks ranging from \$13-\$18 each. That bar also offers wine by the bottle and glass, beer, spirits, zero-proof drinks, and hot tea by the pot. Its Chinese and French influenced dishes include gyoza de boeuf, black pepper duck, and "1970's garlic noodles." Bar Chinois plans to offer daily \$1 dumplings and half-priced cocktails from 4-6 p.m. It can seat 90 indoors and 58 outside.

French-Asian bakery chain comes to Pentagon City

Mango cream-filled doughnuts, handheld caramel pies, kimchi croquettes – these are among the many pastry options at [Tous les Jours](#), a bakery franchise with Asian and French influences. The bakery opened last month at 1100 S. Hayes, where Maizal closed last summer. The café-bakery also offers sandwiches, cakes (including shapes to order for birthdays), and baked breads. Tous les Jours, which opened a shop in Ballston in January, has more than 110 locations across the nation.



Fruit pastry

Doughnut shop with a flair for the unusual opening in mall

If you're on a diet, don't read this. The [Duck Donuts](#) franchise is coming to the Pentagon City mall, featuring flavors that enliven the tastebuds like PB&J, lemon coconut, and cookie butter cream. The shop also sells milkshakes, ice cream, and – for the protein conscious – donut egg sandwiches. The shop is expected to open next to Auntie Annie's Pretzels in the food court on the Metro level. It will be the national chain's second Arlington outlet.

ABOUT CCCA

The Crystal City Civic Association (CCCA) was formed on Jan. 28, 2014. We are a non-partisan, not-for-profit organization with the express purpose of advancing the common interests of the residents of the Crystal City neighborhood in Arlington County, Virginia. CCCA gives a voice to our residents. CCCA officers represent community members at County meetings, function as liaisons to state and local lawmakers, coordinate with the Crystal City BID on important issues and projects, and ensure the needs of residents are met.

CRYSTAL CITY CIVIC ASSOCIATION BOARD

President Eric Cassel

Vice President Tarsi Dunlop

Meeting Secretary Sheryl Eaton

Communications Director Andrew Damitio (by appointment)

Membership Liaison Matthew Fuzi

Treasurer Steve Miller

Join on our website:

<http://www.crystalcitycivic.org>

Pay through PayPal

OR

Send a check for \$10 to:

Steve Miller
Treasurer, CCCA
1301 S Fern St
PO Box 2844
Arlington, VA 22202

www.crystalcitycivic.org

www.facebook.com/crystalcitycivic