

# Water Pollution Control Plant Project Updates

Crystal City Civic Association Meeting, September 2025

---

Mary Strawn, Arlington County Department of  
Environmental Services

Brian Balchunas, HDR



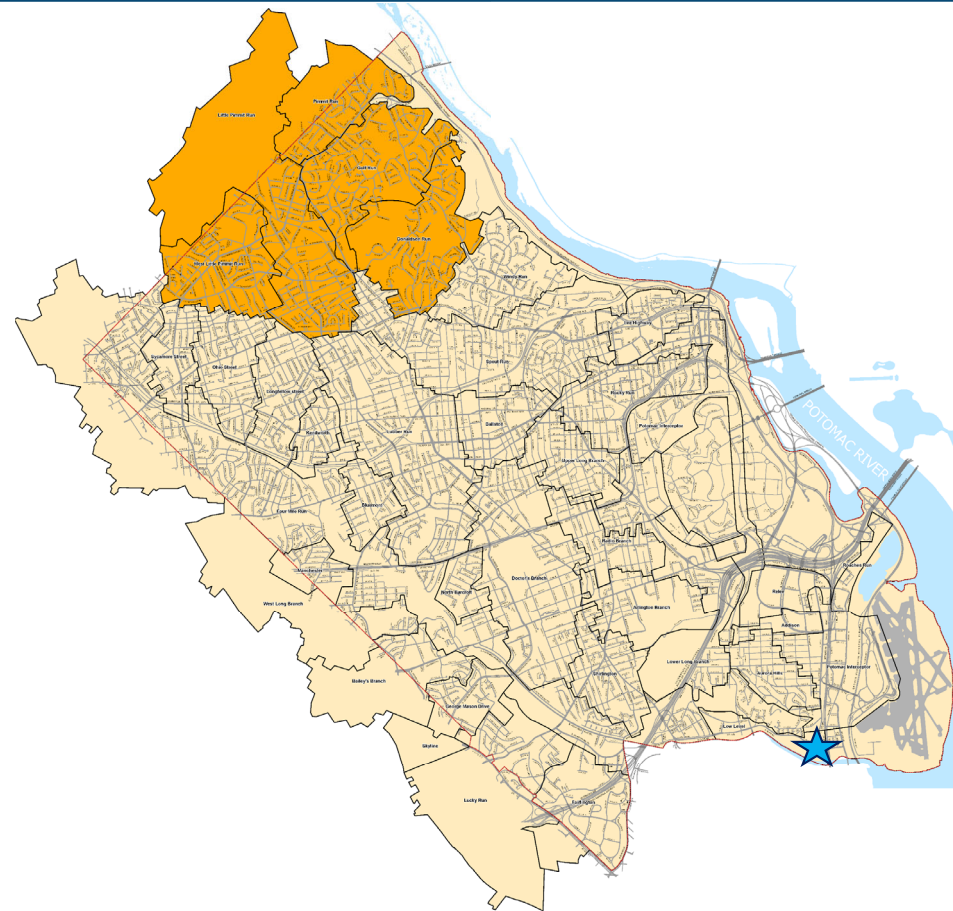
# Agenda

---

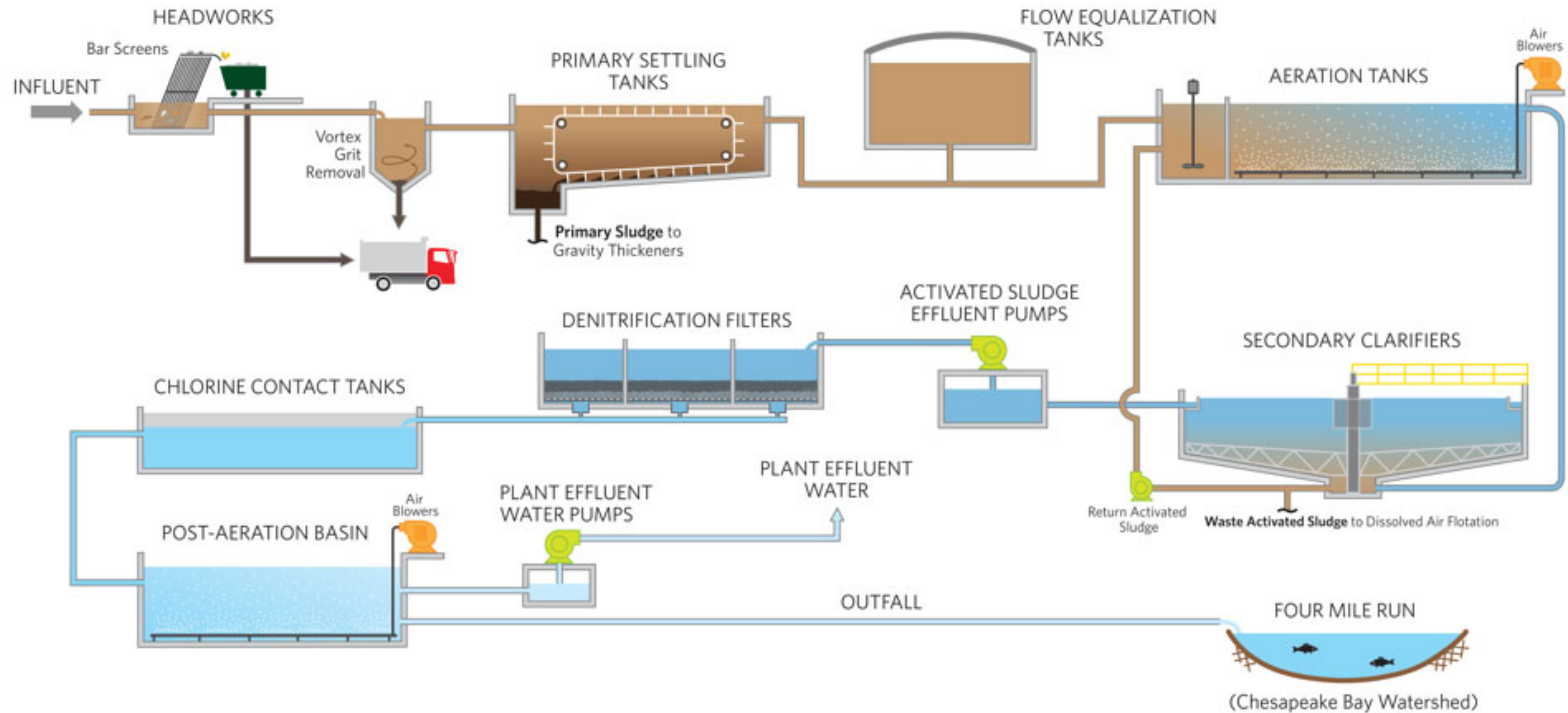
- Water Pollution Control Plant overview
- Biosolids Upgrades Project (Re-Gen) overview
- Activities for 2025 and beyond
- Architectural concepts and renderings for new facilities
- Odors

# Water Pollution Control Plant (WPCP)

- Opened in the 1930s and currently designed for 40 million gallons per day
- Treat wastewater from Arlington as well as parts of Alexandria, Falls Church, and Fairfax County
- Removal of solids, nutrients, and pathogenic organisms
- Treated effluent flows into Chesapeake Bay
- All wastewater treatment plants generate solids, and residuals must be dealt with



## LIQUIDS



## SOLIDS

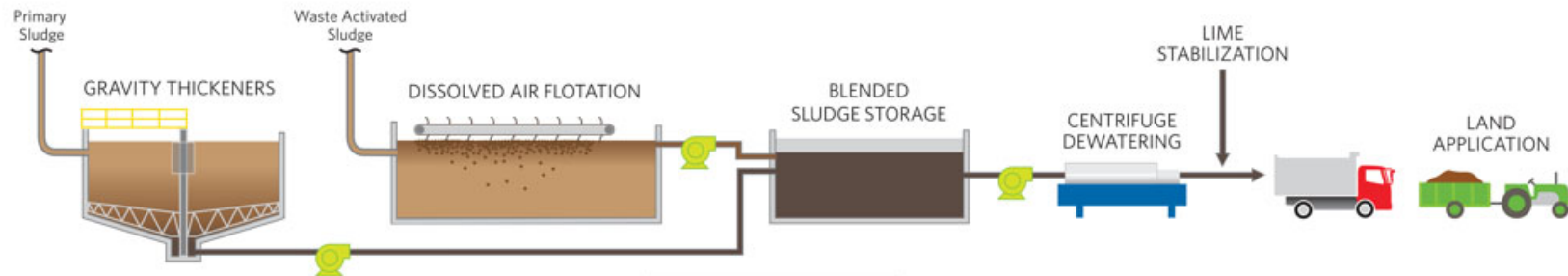
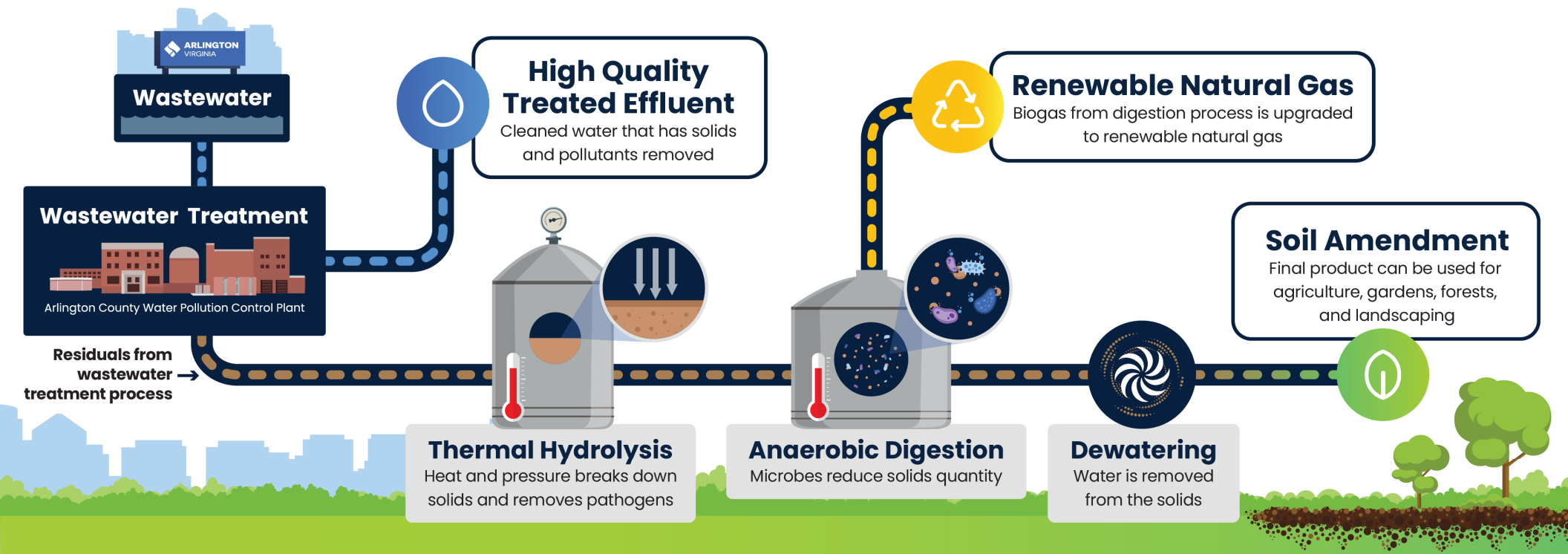


Illustration by Black & Veatch

# Re-Gen: Biosolids Upgrades Program

## RECOVERING RENEWABLE RESOURCES FROM WASTEWATER



# Re-Gen Program Drivers

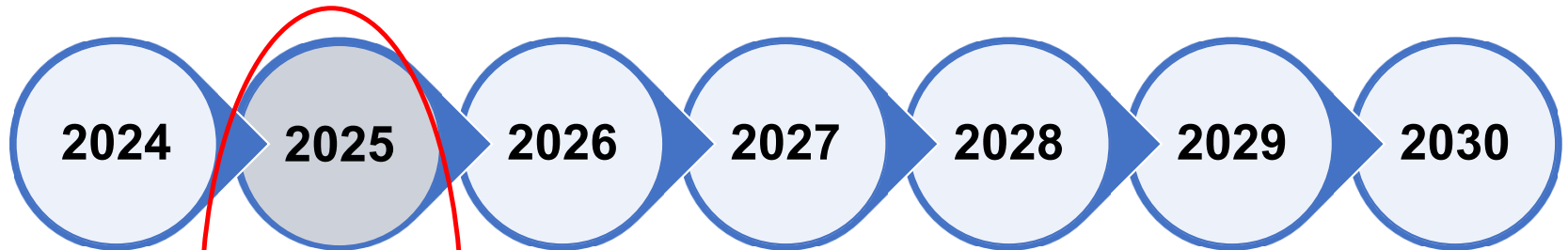
- Failing equipment – solids treatment equipment date from the '90s or before
- Community impacts (odors, truck traffic)
- Desire to achieve more sustainable outcomes



# Existing Water Pollution Control Plant



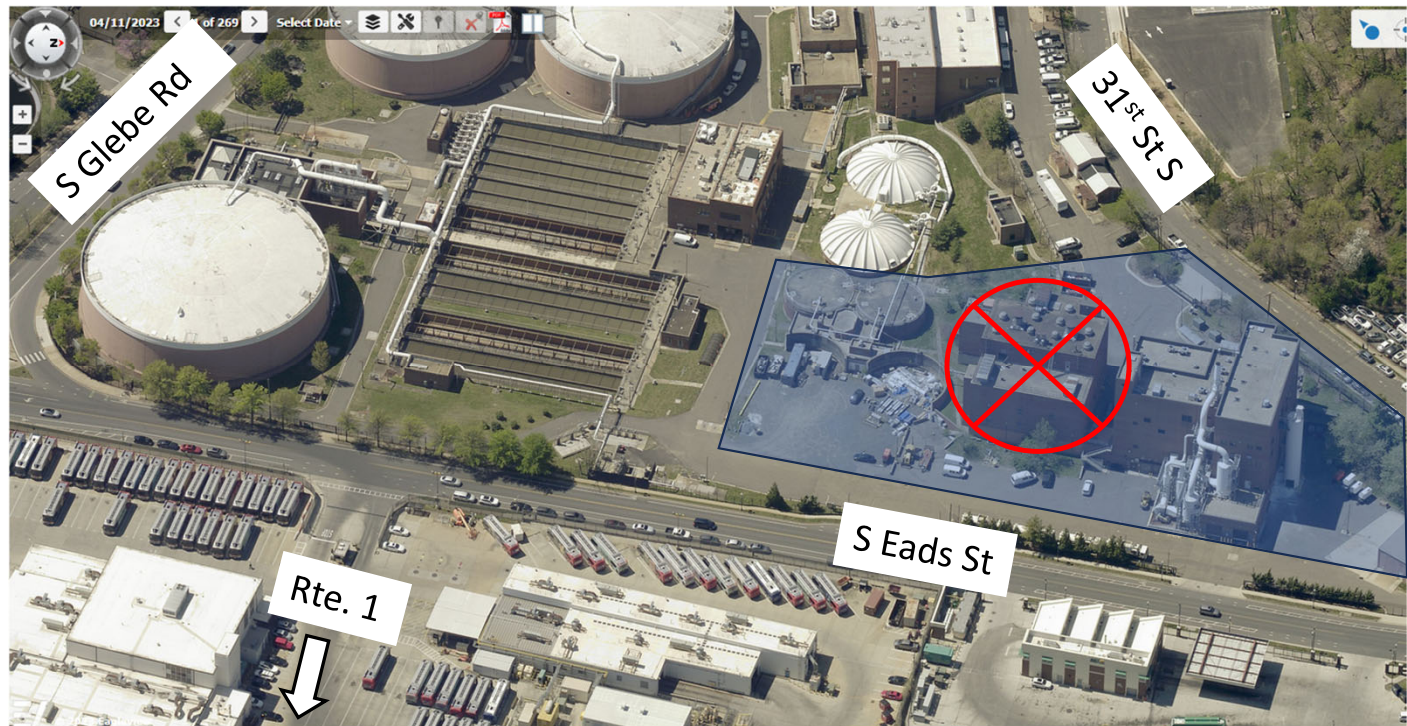
# Re-Gen Timeline



<b>Gravity Thickeners</b>	Planning	Design	Design and Bidding	Construction	Construction		
<b>Early Work</b>	Design	Design and Construction	Construction				
<b>Main Work Package</b>	Design	Design	Design and Construction	Construction	Construction	Construction	Start-up

# What Will Happen in 2025-26 on Re-Gen?

- Permitting underway
- Construction expected to begin in early November:
  - Minor site work and utility relocations
  - Installation of new piping to reroute flows
- Significant demolition activities will not occur until 2026:
  - Demolition of old incinerator building



# Reducing Construction Impacts of Re-Gen

- Noise
  - Strategy: alternatives to pile driving
- Dust and trash
  - Strategy: daily housekeeping inspections
  - Strategy: air quality monitoring during demolition activities
- Traffic
  - Strategy: only brief road closures on S. Eads St. and 31<sup>st</sup> St. S. anticipated

# Architectural Basis



# Current Architectural Concepts





View looking northwest from Eads



View looking northwest from Eads

# Current Architectural Concepts



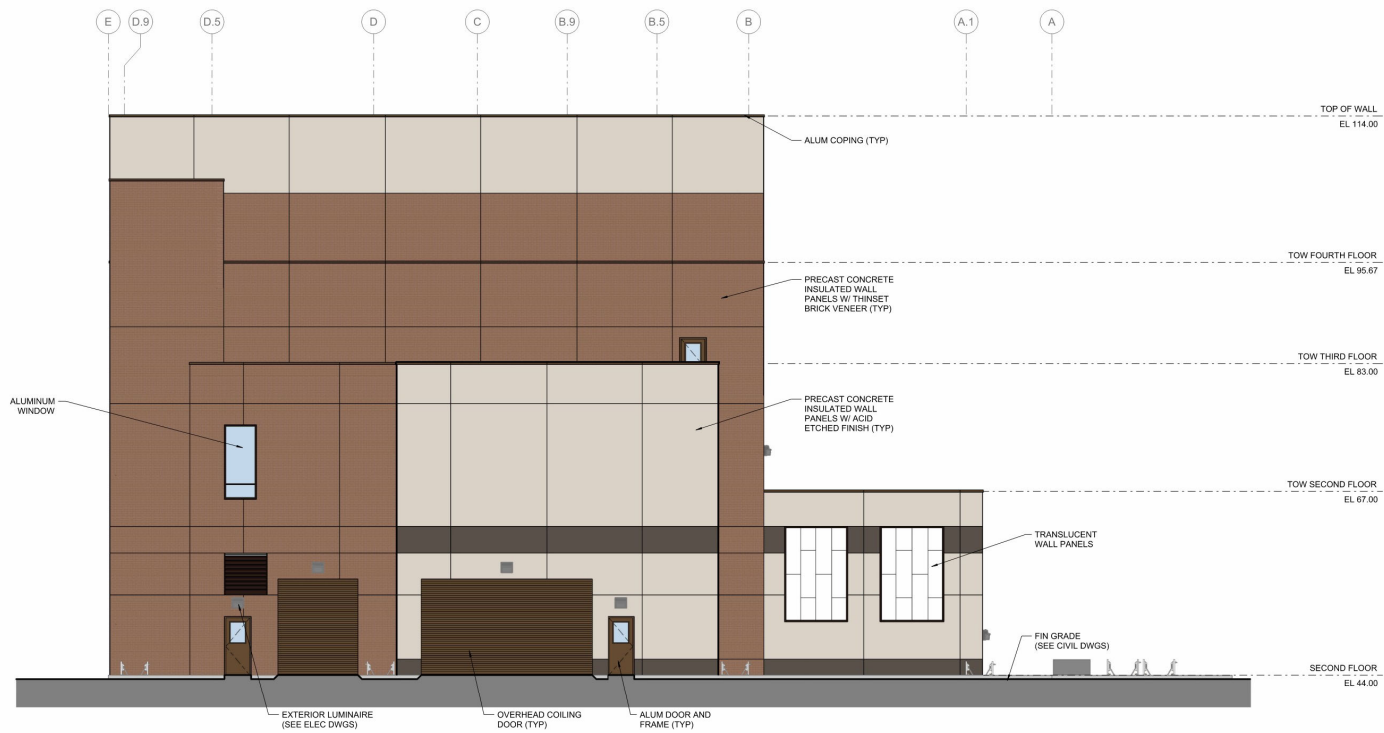


View looking southeast from 31<sup>st</sup> St S



View looking southeast from 31<sup>st</sup> St S

# Current Architectural Concepts



3 WEST ELEVATION  
SPBA-103 SCALE: 1/8" = 1'-0"

## Future Processes and Buildings – View from West



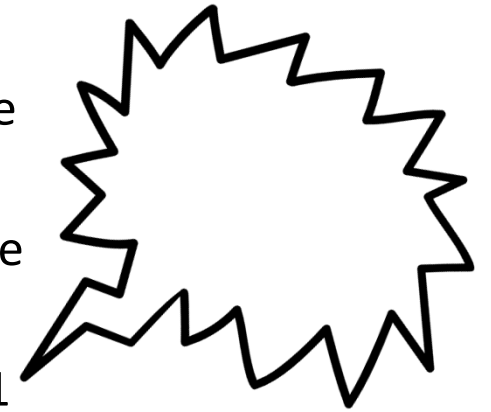
# Future Processes and Buildings – View from Northwest



# What's That Smell??



- Odorous areas are mostly located on the north side of Glebe
- Odor control systems in place to collect and treat odors
- Short-term odors can occur (hauling trucks, process upset) in the area around the WPCP
- We are monitoring our housekeeping to ensure off-site odors are minimized
  - The Shift Supervisor phone is monitored 24/7: 703-585-6851
- Further away, rotten-egg smells can be caused by low flows in sanitary sewer in the street
  - Sink drains can also release sulfurous odors



## More Info

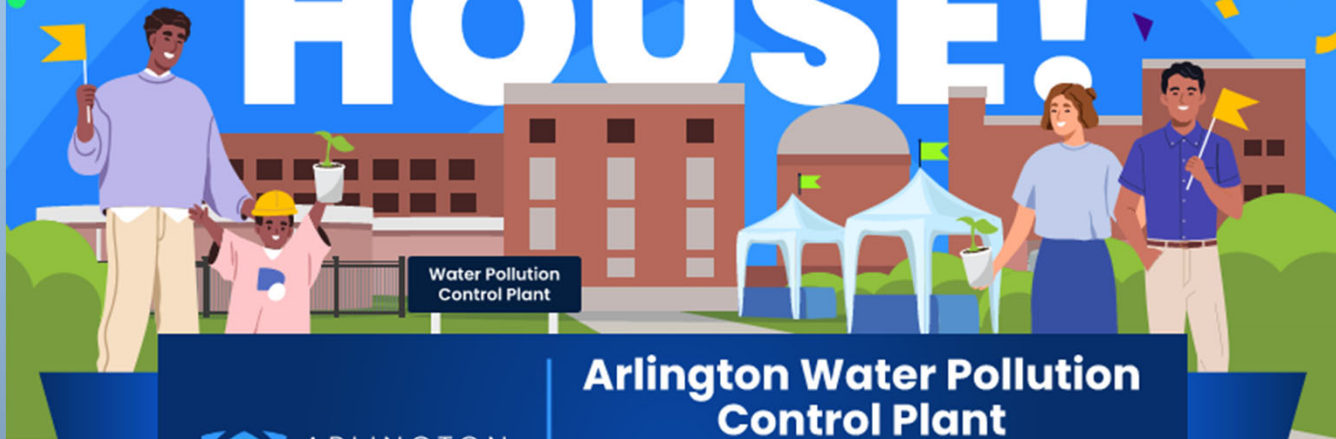
- Project website:  
[www.arlingtonregen.com](http://www.arlingtonregen.com)
- Website will contain regular project status updates once construction starts
- Visit [www.arlingtonva.us](http://www.arlingtonva.us) and search “water pollution” for more information
- Plant tours available through end of October; no tours during construction



**Scan For More  
Information**



# OPEN HOUSE!



## Arlington Water Pollution Control Plant

**Saturday, October 18, 2025  
10 AM – 2 PM**

3402 S. Glebe Road, Arlington, VA  
*Parking is available nearby*

**KIDS GAMES! PLANT TOURS! ASK AN EXPERT!**